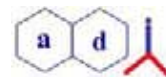




LIFE TECHNOLOGIES (INDIA) PVT. LTD.

your molecular & cell technology partner

Bringing zest to your research



**ALPHA DIAGNOSTIC
INTERNATIONAL**

Website: <http://www.lifetechindia.com>

Bovine Serum Albumin (BSA) Quantitative ELISA Kits

Catalogue #	Details
Cat # 8000	<p>Species Reactivity Bovine</p> <p style="text-align: right;">Click Here For Complete Protocol</p> <p>Samples Serum. Plasma, Culture medium and other fluids may be adapted</p> <p>Kit Contents 1. Bovine Albumin coated strip plate (8 wells x 12 strips) 80012. Bovine Albumin Std. A (0.1 ug/ml), 0.25 ml 80023. Bovine Albumin Std B (0.5 ug/ml), 0.25 ml 80034. Bovine Albumin Std C (1 ug/ml), 0.25 ml 80045. Bovine Albumin Std D (40 ug/ml), 0.25 ml 80056. Bovine Albumin Std E (100 ug/ml), 0.25 ml 80067. Bovine Albumin Std F (400 ug/ml), 0.25 ml 80078. 20x Sample Diluent, 10ml SD-20B9. Wash Buffer (100X), 10 ml WB-10010. 100x Anti-Bovine Albumin-HRP Conjugate, 0.12 ml 800911. TMB Substrate, 12 ml 8009112. Stop solution, 12 ml 8010113. Instruction Manual M-8000</p> <p>Form Stds=0.15-40 ug/ml; Sample=100 ul; Sensitivity=100 ng/ml;75 min assay; Quantitative, Competitive, 96 tests</p> <p>Sp. Crossreactivity BSA ELISA kits cross reactivity was tested with the following animal sera (albumin) at dilutions of 1:10: Mouse (18%), Rabbit (100%), and FBS (16%) showed some cross reactivity. Rat, Guinea Pig, Goat, Chicken, Pig, Hamster, Human, Monkey, and Sheep serum albumin all had less than 1% cross reactivity.</p>
Cat # 8100	<p>Species Reactivity Bovine</p> <p style="text-align: right;">Click Here For Complete Protocol</p> <p>Samples Recombinant proteins or antibodies or vaccines preparations containing residual BSA used a carrier of cells cultured in the presence of fetal calf/bovine serum</p> <p>Kit Contents Anti-Bovine Albumin Microwell Plate, 8-well strips (12), 8101</p> <p>Form Stds=0-80 ng/ml ; Sample=100 ul; Sensitivity= 0.5 ng/ml; 135 min assay; Quantitative, sandwich assay</p> <p>Sp. Crossreactivity The antibodies used in this kit have been shown by immuno-electrophoresis and ELISA to react specifically with BSA, and to have essentially no reactivity with other bovine serum proteins.</p>