

100s OF REMEDIES TO MAKE YOUR RESEARCH EASIER, QUICKER, SAFER & COST EFFECTIVE

- Your RNA is now more happy to stay at room temperature.....
- What a relief it would be, if I can store my RNA at Room Temp...? Path-breaking technologies in Bio-Banking...
- Do you still use Ethidium Bromide? The end of the Toxic era Stay Bio-Safe !!
- Look at the novel short cut to isolate your RNA. Save time; No hassles of DNase treatment any more....
- Tired making competent cells ? Top Quality Cells costing Peanuts.....
- Can I store my tissues and other samples safely, for RNA to be extracted later....??
- Interested to clone large inserts..... 30kb is now a child's play
- Top Quality Certified FBS, CE, ISO 13485, EDQM - USDA/Australian..... Ensure 50% savings.....0% hassles
- Still buying Gel Ex & PCR Purification Kits separately? Order the 2 in 1 kit. Save ½ the cost & shelf space.....
- Recall your Proteins and re-play again: Western blot recycling kit saves hours and laborious days....
- Antigen-Antibody Pens-™ See what has been missing in Western Blots.
- Bringing colors to your Protein research: Spectrum Prestained markers
- AuPreP Gold cDNA Kit is changing the Price benchmarks in the segment. Beating any price ...
- Simply dream prices coupled with best experience - EZ-RNA; EZ-ECL ; EZ-DNA reagent systems

LIFE TECH

LIFE TECHNOLOGIES (INDIA) PVT. LTD.

your molecular & cell technologies partner

306, Aggarwal City Mall, Opp. M2K Pitampura, Delhi-110034

Tel: +91-11-42208000 Fax: +91-11-42208444 Mobile: +91-9810521400

Email: customerservice@lifetechindia.com

LIFETECH

AUTOMATIC PIPETTE

OPERATIONAL MANUAL

Thank you very much for choosing Lifetech Automatic Pipettes. Lifetech Automatic Pipettes are fully autoclavable and of very high quality at most cost effective prices, offering you complete reliability & satisfaction.



Lifetech Automatic Pipettes are comfortable to handle with a novel design structure, high precision, light weight, fine repeatability, direct reading, easy operation and durability. Please read the usage guidelines overleaf for more details. Our Pipettes have applications in medical, chemical, biotechnology, research departments etc.

www.lifetechindia.com

DNA IS MY LIFE

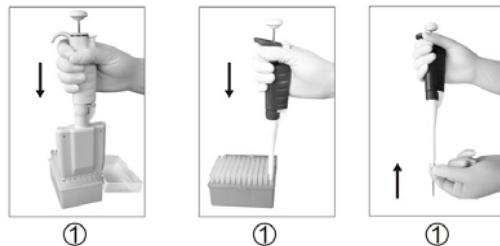
[Click Here for More Details](#)

Performance & Characteristics

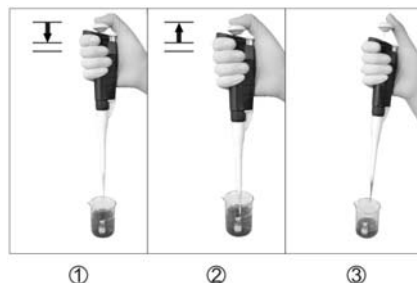
The Pipettes use principal of suction and drainage. When the piston reciprocates in its sleeve, negative pressure (vacuum) is created, the quantitative volume can be sucked. The moving distance of piston is realized by screw mechanism though rotation of adjustable wheel. The Automatic pipettes are easy to operate and are highly reliable.

Usage

- Secure the suction tip to the top of suction tube without spacing. If you are handling it by single hand, you should use Tip box with 96 cavities.



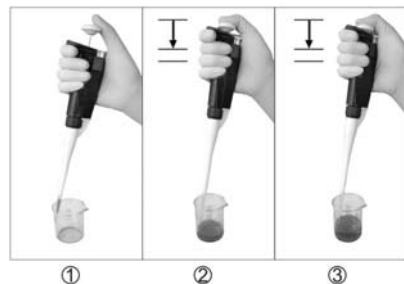
- Hold the Pipettes vertically, slightly pushing button to the first stop then immerse the pipette tip into solution. Then release the pushing button slowly and make it revert to the original position. Take off the pipette from the liquid after a interval 2-3 seconds



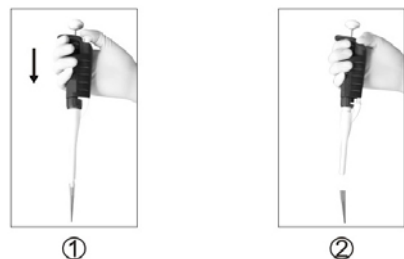
The immersed depth of the tip is --

0.20-10 μ l	\leq 1mm
20-100 μ l	\leq 2-3mm
200-1000 μ l	\leq 2-4mm
1000-5000 μ l	\leq 3-6mm

- Place the suction tip of the pipette into the container. Depress the pushing button to the first stop and further more to the end to discharge the solution completely from the tip. Move the tip up and down along with the inner wall of the container for several times before takeoff the pipette. You can then release the pushing button and take the pipette away.



- After work, the suction tip will be taken off from the suction tube automatically by pressing the Tip ejector



Technical data

Model	Cat #	Nominal Volume μ l	Tolerance allowed %	Repeatability %
P2	LTP-2-FA	0.2	\pm 12	\leq 6.00
		0.5	\pm 5	\leq 2.50
		2	\pm 1.5	\leq 0.70
P10	LTP-10-FA	1	\pm 2.5	\leq 1.25
		5	\pm 1.5	\leq 0.60
		10	\pm 1.0	\leq 0.40
P20	LTP-20-FA	2	\pm 5.0	\leq 1.50
		10	\pm 1.0	\leq 0.50
		20	\pm 1.0	\leq 0.30
P100	LTP-100-FA	10	\pm 2.0	\leq 0.60
		50	\pm 0.8	\leq 0.24
		100	\pm 0.8	\leq 0.15
P200	LTP-200-FA	20	\pm 1.2	\leq 0.50
		100	\pm 0.8	\leq 0.25
		200	\pm 0.8	\leq 0.15
P1000	LTP-1000-FA	100	\pm 1.8	\leq 0.40
		500	\pm 0.8	\leq 0.25
		1000	\pm 0.8	\leq 0.15
P5000	LTP-5000-FA	1000	\pm 1.2	\leq 0.30
		2000	\pm 0.6	\leq 0.25
		5000	\pm 0.6	\leq 0.16

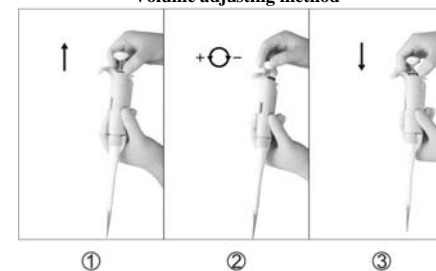
Technical data (Multi-channel)

Model	Cat #	Volume μ l	Accuracy %	Precision %
P12X20	LTP12M-20-FA	2	\pm 6.0	\leq 2.00
		10	\pm 1.5	\leq 0.60
		20	\pm 1.2	\leq 0.40
P12X200	LTP12M-200-FA	20	\pm 1.8	\leq 0.60
		100	\pm 1.0	\leq 0.30
		200	\pm 1.0	\leq 0.20

Numbers Display Settings

P2	P10	P20	P100	P200	P1000	P5000
1	0	1	0	1	0	0
2	7	2	7	2	7	2
5	5	5	5	5	5	5
1.25 μ l	7.5 μ l	12.5 μ l	75 μ l	125 μ l	750 μ l	2500 μ l

Volume adjusting method



Remarks:

- Pipette being a precision instrument, it requires adjustment of the number wheel to the volume required before operation.
- In order to obtain the high precision, please immerse the tips before sucking the solution, this will eliminate the tolerance.
- Disassembly of Automatic pipette is prohibited.
- Pipette must be re-calibrated after it is autoclaved under 121°C. This pipette can be autoclaved not more than 6 times.
- Working ambient temperature: 20°C \pm 5 °C.