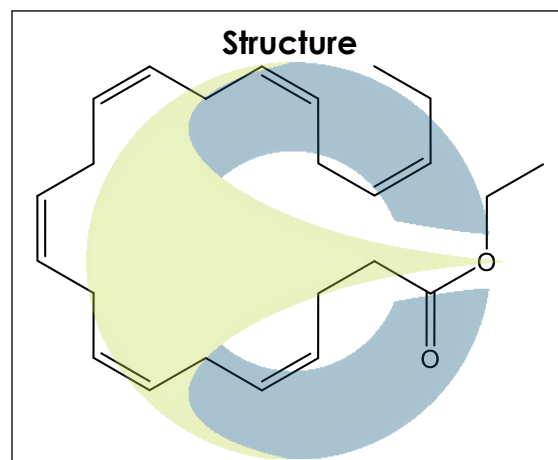


Certificate of Analysis
For Laboratory Use Only

PRODUCT NAME	Docosahexaenoic acid ethyl ester (DHA EE)
PART NUMBER	00004986
STANDARD TYPE	Analytical Standard (AS)
LOT NUMBER	00004986-00682
REPORT NUMBER	CDXA-RSS-9880-00
SAMPLE NUMBER	CDXP-22-00682
DATE OF SAMPLE	08/04/2022
DATE OF REPORT	08/11/2022



CHEMICAL NAMES	4,7,10,13,16,19-Docosahexaenoic acid ethyl ester
CHEMICAL FORMULA	C ₂₄ H ₃₆ O ₂
MOLECULAR WEIGHT (MW)	356.54
CHEMICAL FAMILY	Fatty acids
CAS NUMBER	[84494-72-4]
EC#(EINECS)	NA
RTECS	NA

ANALYTICAL RESULTS

TEST	METHOD	SPECIFICATION	RESULT
GC	0.700.10.2.METH140	≥ 75%	93.6%
Mass Spectrum	0.700.10.2.METH140	Conforms	Conforms
Appearance	NA	NA	Oil

STORAGE CONDITIONS

STORAGE	+4 °C in a dry place.
EXPIRATION DATE	08/2027 under the above conditions.

This document is the property of ChromaDex, Inc. and/or its relevant affiliates and contains confidential and proprietary material for the sole use of the intended recipient(s). Any review, use, distribution or disclosure by or to others is strictly prohibited.

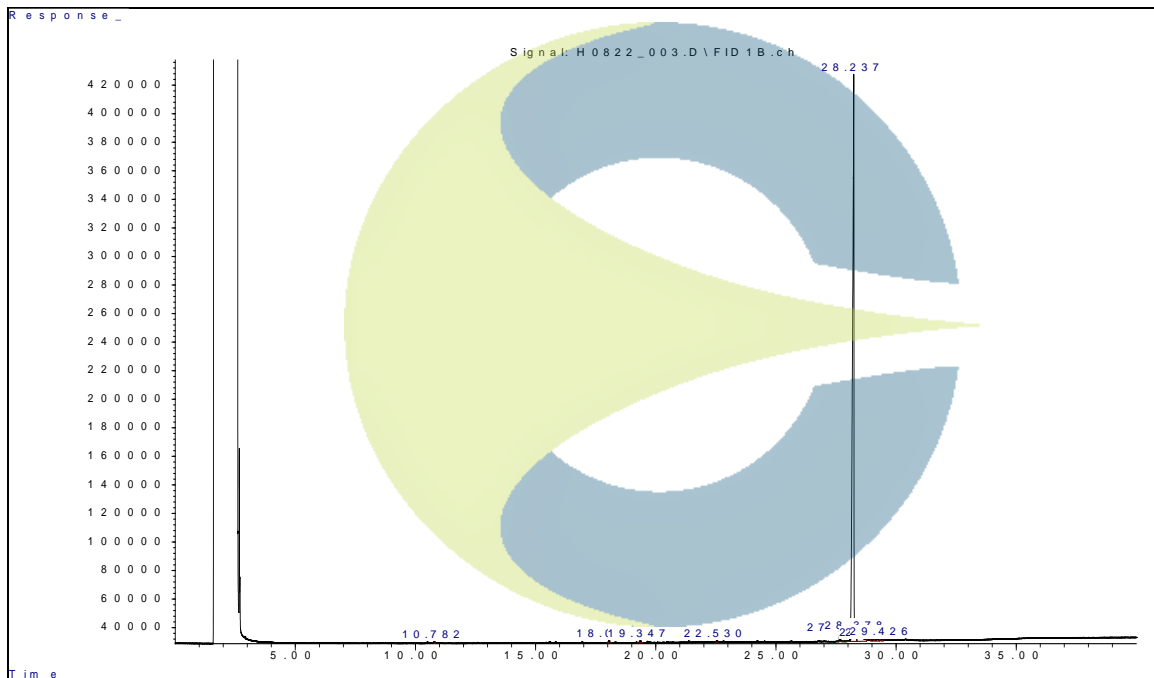
Certificate of Analysis

For Laboratory Use Only

ANALYTICAL CONDITIONS

INSTRUMENT	AGILENT 7890B WITH FLAME IONIZATION DETECTOR (FID) AND AGILENT 5977B MASS SELECTIVE DETECTOR (MSD)
COLUMN	Phenomenex Zebron ZB-5plus, 30 m x 0.32 mm x 0.25 μm
CARRIER GAS	Helium
COLUMN TEMP.	Isothermic 40 °C for 5.0 minutes, then increasing at 10.0 °C/minute to 340 °C. Hold at 340 °C for 5.0 minutes.
FLOW RATE	2.0 mL/minute
INJECTOR TEMP.	300 °C
INJECTOR SPLIT RATIO	20:1
INJECTION VOL.	1.0 μL
INJECTION CONC.	1.4 mg/mL in Methanol
DETECTION	FID (300 °C) & MSD (Transfer line 280 °C, Source 250 °C, Quad 150 °C)

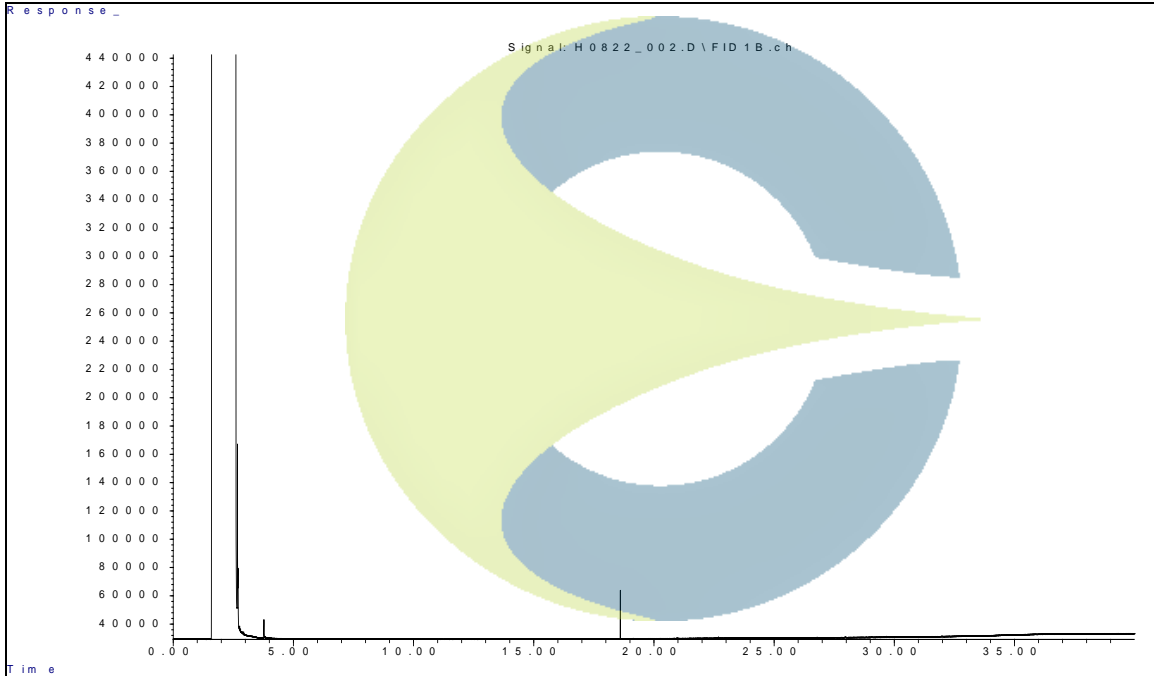
GC CHROMATOGRAM OF DOCOSAHEXAENOIC ACID ETHYL ESTER (DHA EE) (CDPX-22-00682)



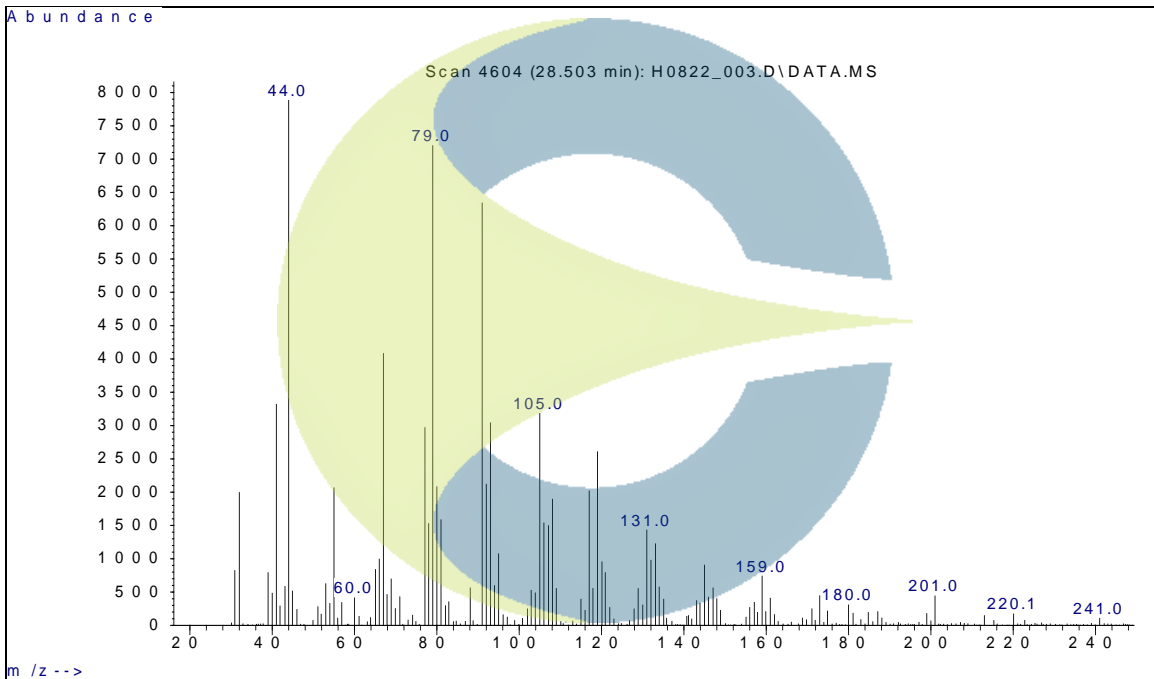
This document is the property of ChromaDex, Inc. and/or its relevant affiliates and contains confidential and proprietary material for the sole use of the intended recipient(s). Any review, use, distribution or disclosure by or to others is strictly prohibited.

10900 Wilshire Blvd., Suite 600, Los Angeles, CA 90024 | T: +1 949-419-0288 | F: +1 949-419-0294 | www.chromadex.com
 Laboratory address: 1751 S. Fordham St., Suite 350, Longmont, CO 80503

GC CHROMATOGRAM OF DILUENT BLANK



MASS SPECTRUM OF DOCOSAHEXAENOIC ACID ETHYL ESTER (DHA EE) (CDXP-22-00682)



This document is the property of ChromaDex, Inc. and/or its relevant affiliates and contains confidential and proprietary material for the sole use of the intended recipient(s). Any review, use, distribution or disclosure by or to others is strictly prohibited.

10900 Wilshire Blvd., Suite 600, Los Angeles, CA 90024 | T: +1 949-419-0288 | F: +1 949-419-0294 | www.chromadex.com
Laboratory address: 1751 S. Fordham St., Suite 350, Longmont, CO 80503

India Contact:
Life Technologies (India) Pvt. Ltd.
306, Aggarwal City Mall, Opposite M2K Pitampura, Delhi – 110034 (INDIA). Ph: +91-11-42208000, 42208111, 42208222, Mobile: +91-9810521400, Fax: +91-11-42208444
Email: customerservice@lifetechindia.com Website: www.lifetechindia.com

Certificate of Analysis

For Laboratory Use Only

REVISION HISTORY

<u>Revision History</u>	<u>Date of Revision</u>	<u>Document/Changes</u>
00	08/11/2022	New report

This document is the property of ChromaDex, Inc. and/or its relevant affiliates and contains confidential and proprietary material for the sole use of the intended recipient(s). Any review, use, distribution or disclosure by or to others is strictly prohibited.

10900 Wilshire Blvd., Suite 600, Los Angeles, CA 90024 | T: +1 949-419-0288 | F: +1 949-419-0294 | www.chromadex.com
Laboratory address: 1751 S. Fordham St., Suite 350, Longmont, CO 80503

India Contact:
Life Technologies (India) Pvt. Ltd.
306, Aggarwal City Mall, Opposite M2K Pitampura, Delhi – 110034 (INDIA). Ph: +91-11-42208000, 42208111, 42208222, Mobile: +91-9810521400, Fax: +91-11-42208444
Email: customerservice@lifetechindia.com Website: www.lifetechindia.com