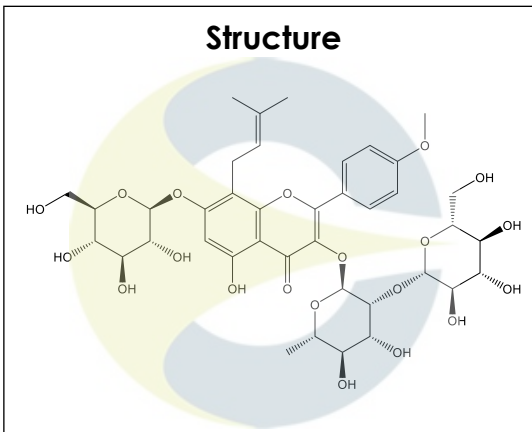


**Certificate of Analysis**

For Laboratory Use Only

<b>PRODUCT NAME</b>	Epimedin A	 <p style="text-align: center;"><b>Structure</b></p>
<b>PART NUMBER</b>	00005158	
<b>STANDARD TYPE</b>	Primary (P)	
<b>LOT NUMBER</b>	00005158-220	
<b>REPORT NUMBER</b>	CDXA-RSS-9914-00	
<b>SAMPLE NUMBER</b>	CDXP-22-00673	
<b>DATE OF SAMPLE</b>	08/03/2022	
<b>DATE OF REPORT</b>	09/21/2022	

<b>CHEMICAL NAMES</b>	3-((6-Deoxy-2-O-β-D-glucopyranosyl-α-L-mannopyranosyl)oxy)-7-(β-D-glucopyranosyloxy)-5-hydroxy-2-(4-methoxyphenyl)-8-(3-methyl-2-buten-1-yl)-4H-1-benzopyran-4-one
<b>CHEMICAL FORMULA</b>	C <sub>39</sub> H <sub>50</sub> O <sub>20</sub>
<b>MOLECULAR WEIGHT (MW)</b>	838.80
<b>CHEMICAL FAMILY</b>	Flavonoids
<b>CAS NUMBER</b>	[110623-72-8]
<b>EC#(EINECS)</b>	NA
<b>RTECS</b>	NA

**ANALYTICAL RESULTS**

TEST	METHOD	SPECIFICATION	RESULT
Adjusted Purity	NA	≥ 85%	95.1%
HPLC	0.700.10.2.METH22	≥ 90%	99.9%
NMR	0.700.12.4	Conforms to structure	Conforms to structure
Mass Spectrum	0.700.12.27	Conforms	Conforms
Residual Solvent*	USP <467>	NA	ND
Acetic Acid	0.700.10.2.METH142	NA	Acetic acid – 27280 ppm
Water	0.700.12.37	NA	2.1%
Appearance	NA	NA	Yellow powder

\*Testing performed at an ISO 17025 accredited subcontracted laboratory.

ADJUSTED PURITY: 95.1% IS BASED ON (100 - 2.7 SOLVENTS - 2.1 WATER) X 99.9% HPLC

**STORAGE CONDITIONS**
**STORAGE** +4 °C in a dry place.

This document is the property of ChromaDex, Inc. and/or its relevant affiliates and contains confidential and proprietary material for the sole use of the intended recipient(s). Any review, use, distribution or disclosure by or to others is strictly prohibited.

# Certificate of Analysis

*For Laboratory Use Only*

**EXPIRATION DATE** 08/2027 under the above conditions.

## ANALYTICAL CONDITIONS

**INSTRUMENT** AGILENT 1260 HPLC UV-VIS (DAD);  
 AB-SCIEX 6600 TRIPLE TOF

**COLUMN** Phenomenex Luna C18(2) 150 x 2.00 mm, 5 µm particle size

**MOBILE PHASE** A - 0.1% Trifluoroacetic acid in Ultrapure water, B - Acetonitrile;  
 Isocratic 5% B for 5 minutes, then increasing to 95% B over 20 minutes. Hold at 95% B for 15 minutes, then decreasing to 5% B over 1 minute.

**COLUMN TEMP.** 60 °C

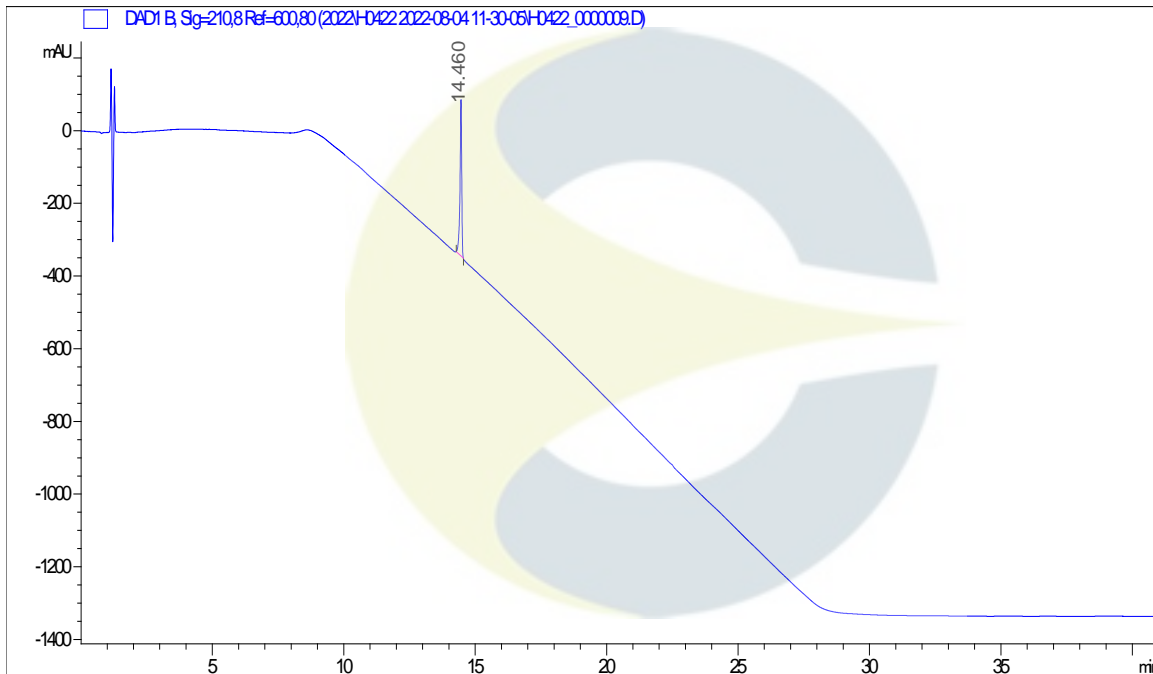
**FLOW RATE** 0.4 mL/minute

**INJECTION VOL.** 0.4 µL

**INJECTION CONC.** 1.2 mg/mL in Methanol

**DETECTION** 210 ± 4 nm

## HPLC CHROMATOGRAM OF EPIMEDIN A (CDXP-22-00673)

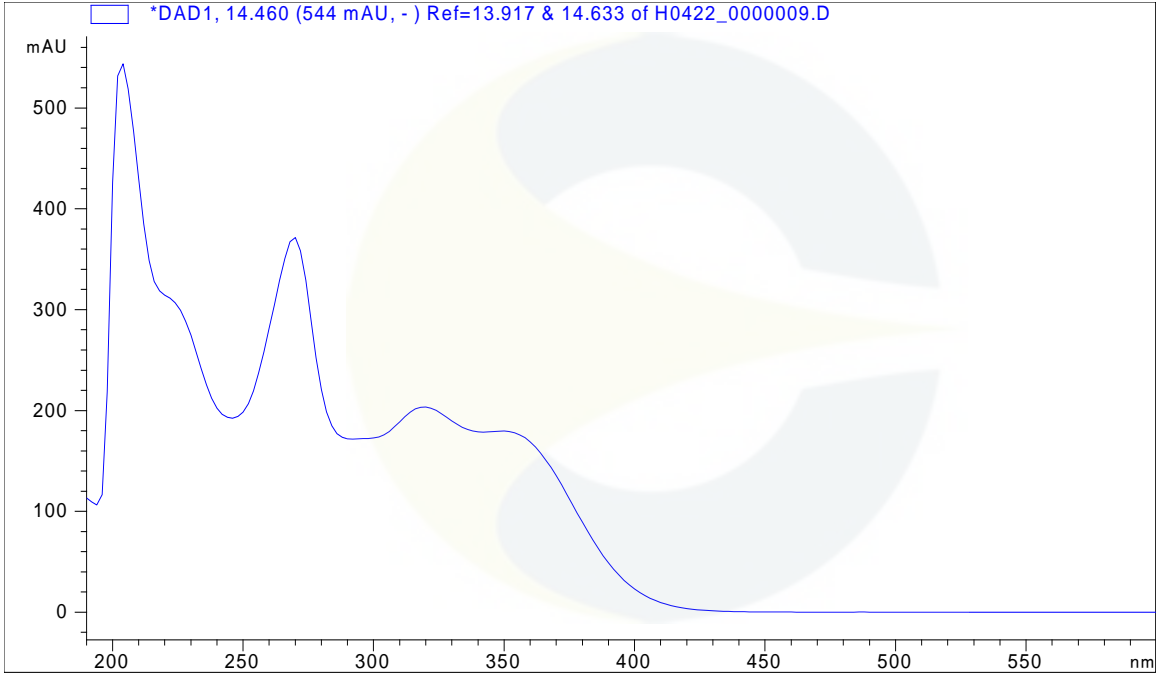


This document is the property of ChromaDex, Inc. and/or its relevant affiliates and contains confidential and proprietary material for the sole use of the intended recipient(s). Any review, use, distribution or disclosure by or to others is strictly prohibited.

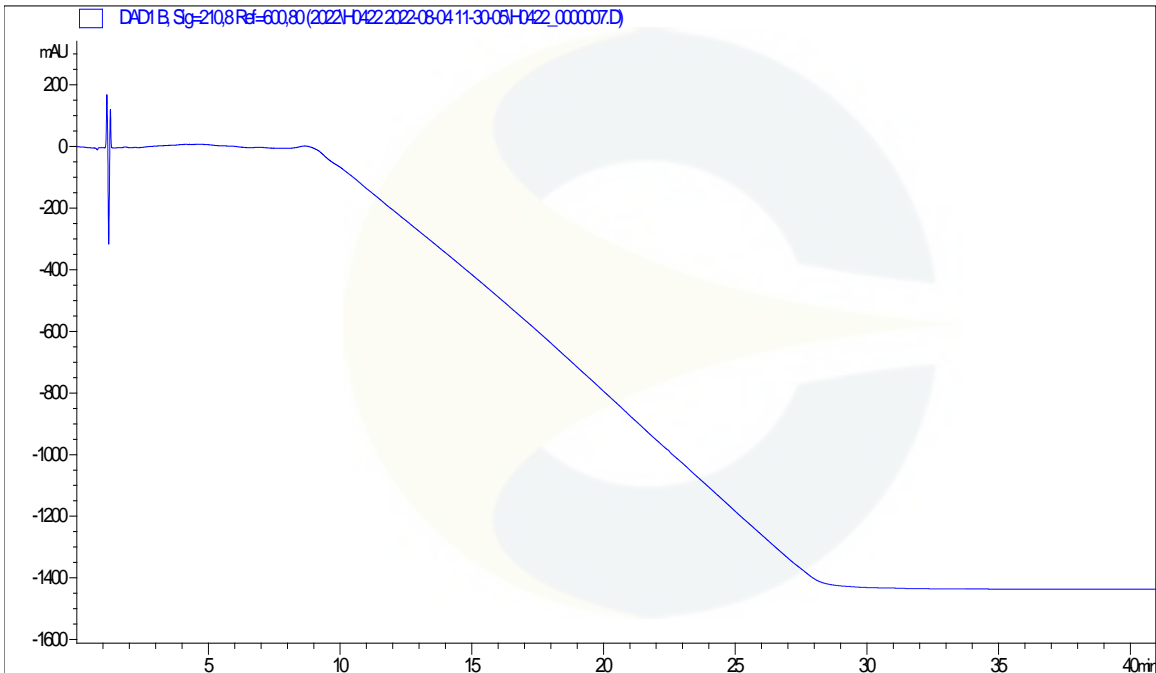
10900 Wilshire Blvd., Suite 600, Los Angeles, CA 90024 | T: +1 949-419-0288 | F: +1 949-419-0294 | [www.chromadex.com](http://www.chromadex.com)  
 Laboratory address: 1751 S. Fordham St., Suite 350, Longmont, CO 80503

**Certificate of Analysis** For Laboratory Use Only

**UV SPECTRUM AT RT = 14.5 MINUTES**



**HPLC CHROMATOGRAM OF DILUENT BLANK**

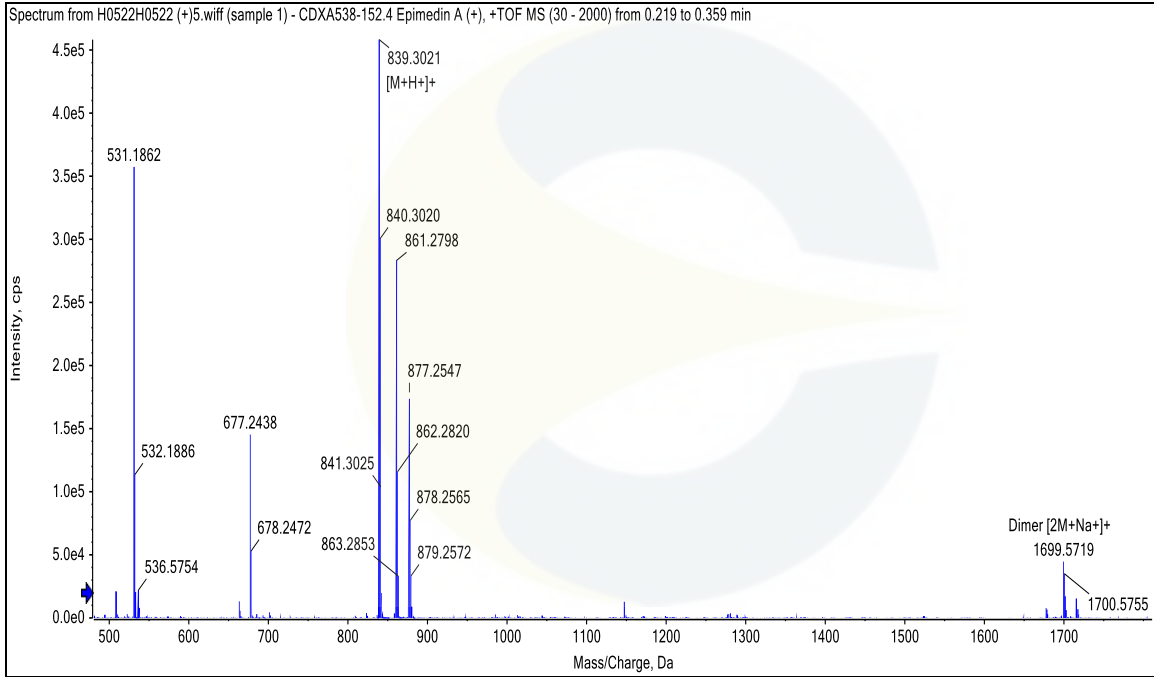


This document is the property of ChromaDex, Inc. and/or its relevant affiliates and contains confidential and proprietary material for the sole use of the intended recipient(s). Any review, use, distribution or disclosure by or to others is strictly prohibited.

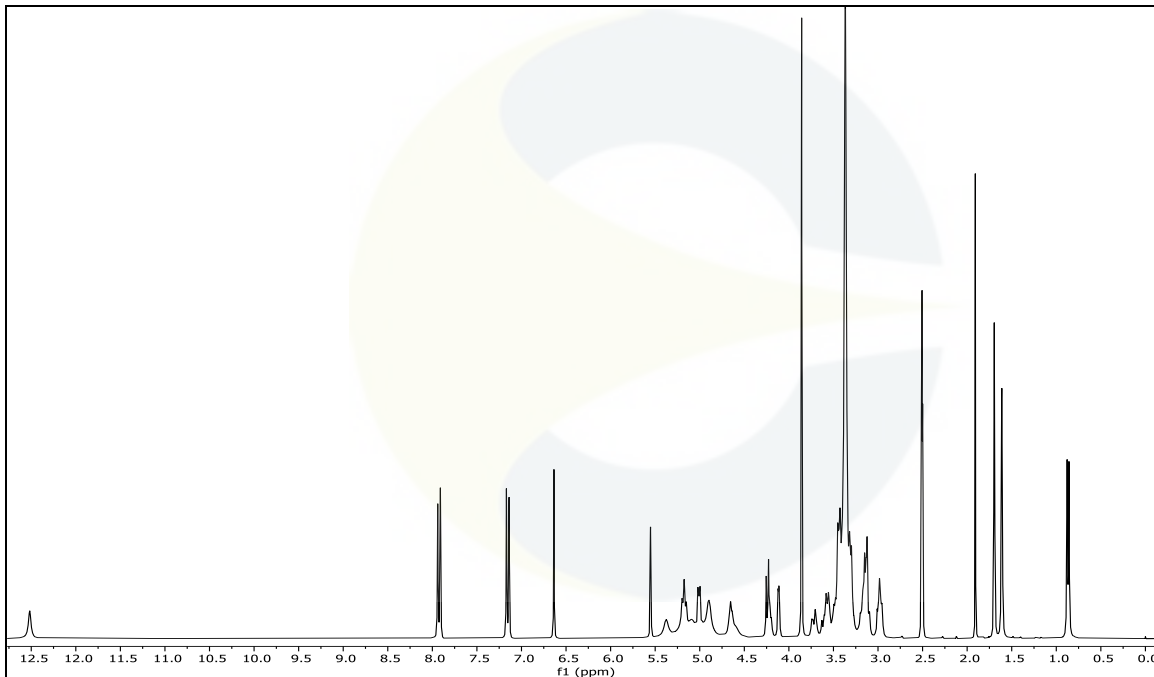
10900 Wilshire Blvd., Suite 600, Los Angeles, CA 90024 | T: +1 949-419-0288 | F: +1 949-419-0294 | [www.chromadex.com](http://www.chromadex.com)  
 Laboratory address: 1751 S. Fordham St., Suite 350, Longmont, CO 80503

Certificate of Analysis For Laboratory Use Only

**MASS SPECTRUM OF EPIMEDIN A (CDXP-22-00673)**



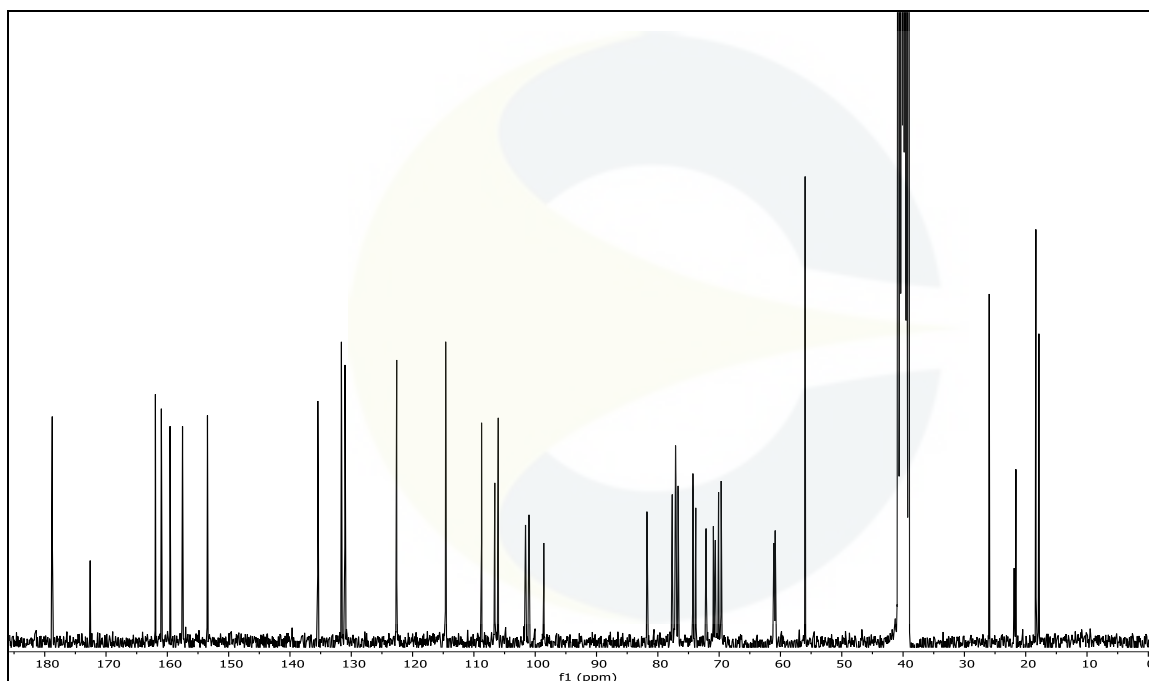
**<sup>1</sup>H-NMR SPECTRUM OF EPIMEDIN A (CDXP-22-00673) IN DMSO-d<sub>6</sub> + TMS**



This document is the property of ChromaDex, Inc. and/or its relevant affiliates and contains confidential and proprietary material for the sole use of the intended recipient(s). Any review, use, distribution or disclosure by or to others is strictly prohibited.

10900 Wilshire Blvd., Suite 600, Los Angeles, CA 90024 | T: +1 949-419-0288 | F: +1 949-419-0294 | [www.chromadex.com](http://www.chromadex.com)  
 Laboratory address: 1751 S. Fordham St., Suite 350, Longmont, CO 80503

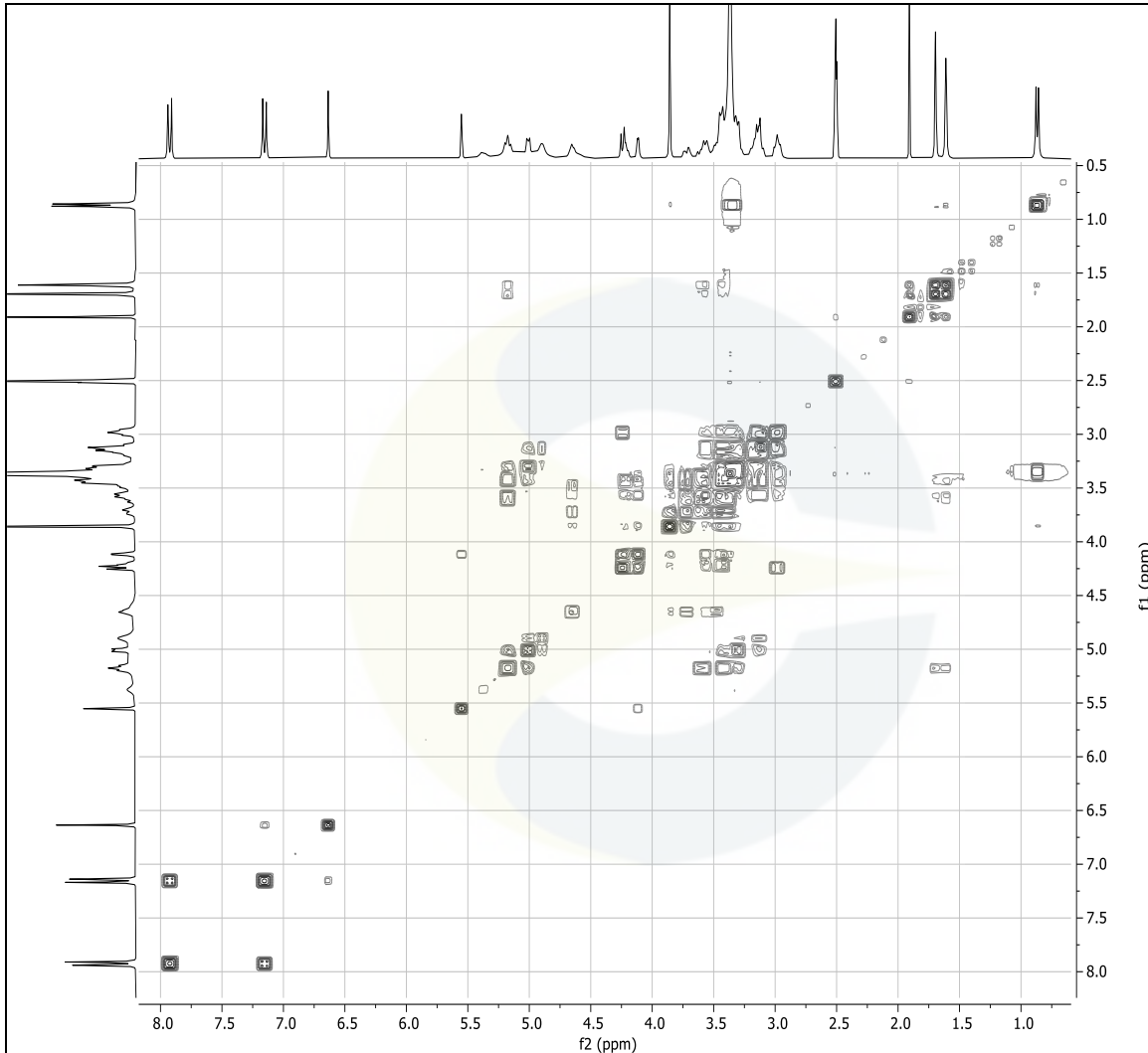
India Contact:  
 Life Technologies (India) Pvt. Ltd.  
 306, Aggarwal City Mall, Opposite M2K Pitampura, Delhi – 110034 (INDIA). Ph: +91-11-42208000, 42208111, 42208222, Mobile: +91-9810521400, Fax: +91-11-42208444  
 Email: [customerservice@lifetechindia.com](mailto:customerservice@lifetechindia.com) Website: [www.lifetechindia.com](http://www.lifetechindia.com)

**<sup>13</sup>C-NMR SPECTRUM EPIMEDIN A (CDXP-22-00673) IN DMSO-d<sub>6</sub> + TMS**

This document is the property of ChromaDex, Inc. and/or its relevant affiliates and contains confidential and proprietary material for the sole use of the intended recipient(s). Any review, use, distribution or disclosure by or to others is strictly prohibited.

10900 Wilshire Blvd., Suite 600, Los Angeles, CA 90024 | T: +1 949-419-0288 | F: +1 949-419-0294 | [www.chromadex.com](http://www.chromadex.com)  
Laboratory address: 1751 S. Fordham St., Suite 350, Longmont, CO 80503

India Contact:  
Life Technologies (India) Pvt. Ltd.  
306, Aggarwal City Mall, Opposite M2K Pitampura, Delhi – 110034 (INDIA). Ph: +91-11-42208000, 42208111, 42208222, Mobile: +91-9810521400, Fax: +91-11-42208444  
Email: [customerservice@lifetechindia.com](mailto:customerservice@lifetechindia.com) Website: [www.lifetechindia.com](http://www.lifetechindia.com)

Certificate of Analysis
For Laboratory Use Only
**COSY-NMR SPECTRUM OF EPIMEDIN A (CDXP-22-00673) IN DMSO-*d*<sub>6</sub> + TMS**

**REVISION HISTORY**

<u>Revision History</u>	<u>Date of Revision</u>	<u>Document/Changes</u>
00	09/21/2022	New report

This document is the property of ChromaDex, Inc. and/or its relevant affiliates and contains confidential and proprietary material for the sole use of the intended recipient(s). Any review, use, distribution or disclosure by or to others is strictly prohibited.

10900 Wilshire Blvd., Suite 600, Los Angeles, CA 90024 | T: +1 949-419-0288 | F: +1 949-419-0294 | [www.chromadex.com](http://www.chromadex.com)  
 Laboratory address: 1751 S. Fordham St., Suite 350, Longmont, CO 80503

India Contact:  
 Life Technologies (India) Pvt. Ltd.  
 306, Aggarwal City Mall, Opposite M2K Pitampura, Delhi – 110034 (INDIA). Ph: +91-11-42208000, 42208111, 42208222, Mobile: +91-9810521400, Fax: +91-11-42208444  
 Email: [customerservice@lifetechindia.com](mailto:customerservice@lifetechindia.com) Website: [www.lifetechindia.com](http://www.lifetechindia.com)