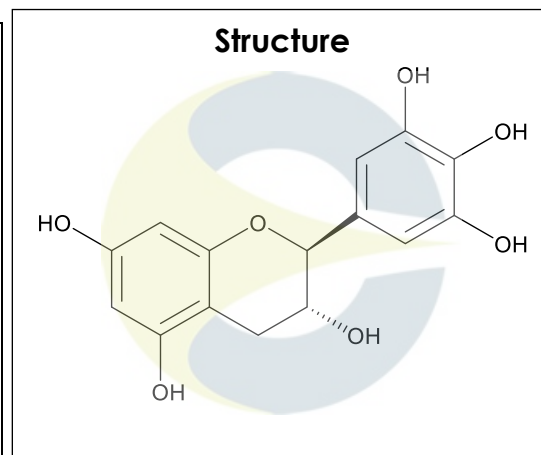


# Certificate of Analysis

*For Laboratory Use Only*

<b>PRODUCT NAME</b>	(-)-Gallocatechin
<b>PART NUMBER</b>	00007043
<b>STANDARD TYPE</b>	Primary (P)
<b>LOT NUMBER</b>	00007043-306
<b>REPORT NUMBER</b>	CDXA-RSS-9135-00
<b>SAMPLE NUMBER</b>	CDXP-20-00633
<b>DATE OF SAMPLE</b>	08/26/2020
<b>DATE OF REPORT</b>	09/22/2020



<b>CHEMICAL NAMES</b>	(2S,3R)-3,4-Dihydro-2-(3,4,5-trihydroxyphenyl)-2H-1-benzopyran-3,5,7-triol
<b>CHEMICAL FORMULA</b>	C <sub>15</sub> H <sub>14</sub> O <sub>7</sub>
<b>MOLECULAR WEIGHT (MW)</b>	306.27
<b>CHEMICAL FAMILY</b>	Catechins
<b>CAS NUMBER</b>	[3371-27-5]
<b>EC#(EINECS)</b>	608-899-7
<b>RTECS</b>	N/A

## ANALYTICAL RESULTS

TEST	METHOD	SPECIFICATION	RESULT
Adjusted Purity	NA	≥ 85%	94.1%
HPLC	0.700.10.2.METH74	≥ 90%	99.9%
NMR	0.700.12.4	Conforms to structure	Conforms to structure
Mass Spectrum	0.700.12.27	Conforms	Conforms
Residual Solvent*	USP <467>	NA	ND
Water	0.700.12.37	NA	5.8%
Appearance	NA	NA	White powder

\*Testing performed at an ISO 17025 accredited subcontracted laboratory.

ADJUSTED PURITY: 94.1% IS BASED ON (100 - 0.0 SOLVENTS - 5.8 WATER) X 99.9% HPLC

## STORAGE CONDITIONS

<b>STORAGE</b>	+4 °C in a dry place.
<b>EXPIRATION DATE</b>	08/2025 under the above conditions.

This document is the property of ChromaDex, Inc. and/or its relevant affiliates and contains confidential and proprietary material for the sole use of the intended recipient(s). Any review, use, distribution or disclosure by or to others is strictly prohibited.

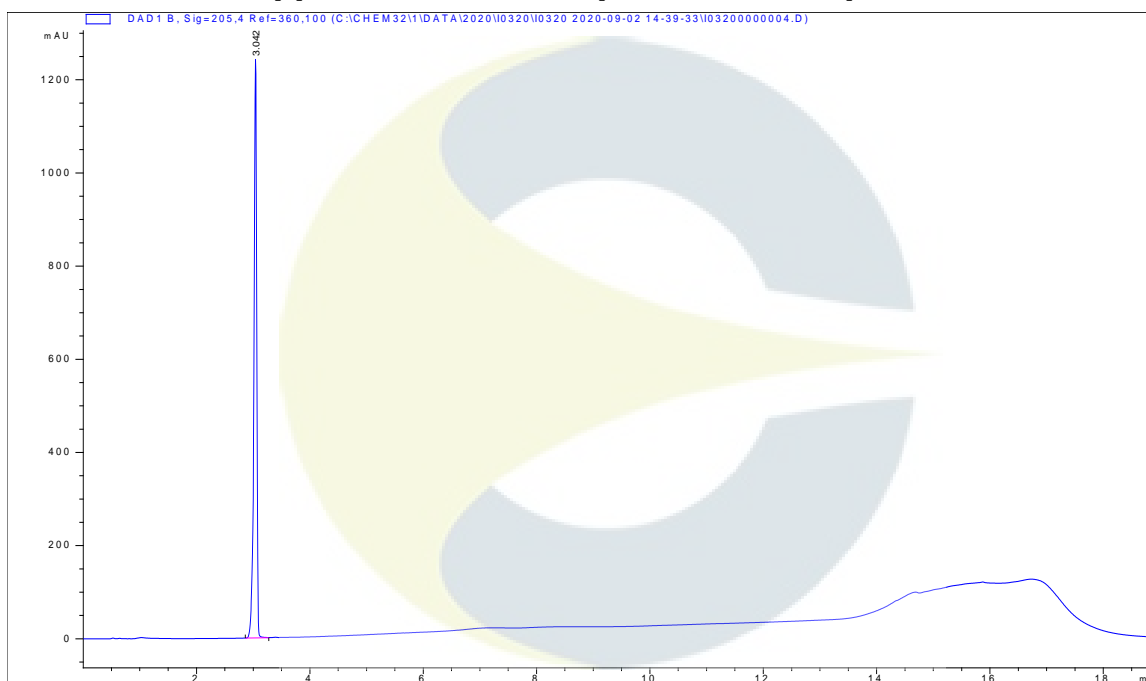
## Certificate of Analysis

*For Laboratory Use Only*

### ANALYTICAL CONDITIONS

<b>INSTRUMENT</b>	AGILENT 1290 UHPLC UV-VIS (DAD); AB-SCIEX 6600 TRIPLE TOF
<b>COLUMN</b>	Phenomenex Kinetex Phenyl-Hexyl 50 x 2.1 mm, 2.6 µm particle size
<b>MOBILE PHASE</b>	A – 97:2:1:0.1: Milli-Q:ACN:MeOH:Phosphoric acid, B – Methanol, C – Acetonitrile Isocratic 100% A decreasing to 90% A and 10% B over 2 minutes, then decreasing to 70% A and increasing to 15% B and 15% C, over 4 minutes, then hold at 70% A, decreasing to 10% B and increasing to 20% C, over 2 minutes. Decreasing to 60% A and 5% B and increasing to 35% C, over 4 minutes, then decreasing to 40% A, increasing to 10% B, and 50% C, over 0.5 minutes, then decreasing to 35% A, hold at 10% B, and increasing to 55% C, over 3 minutes. Increasing to 100% A over 0.5 minutes. Hold at 100% A for 3 minutes.
<b>COLUMN TEMP.</b>	25 °C
<b>FLOW RATE</b>	0.6 mL/minute
<b>INJECTION VOL.</b>	0.2 µL
<b>INJECTION CONC.</b>	1.2 mg/mL in Methanol
<b>DETECTION</b>	205 ± 2 nm

### HPLC CHROMATOGRAM OF (-)-GALLOCATECHIN (CDXP-20-00633)

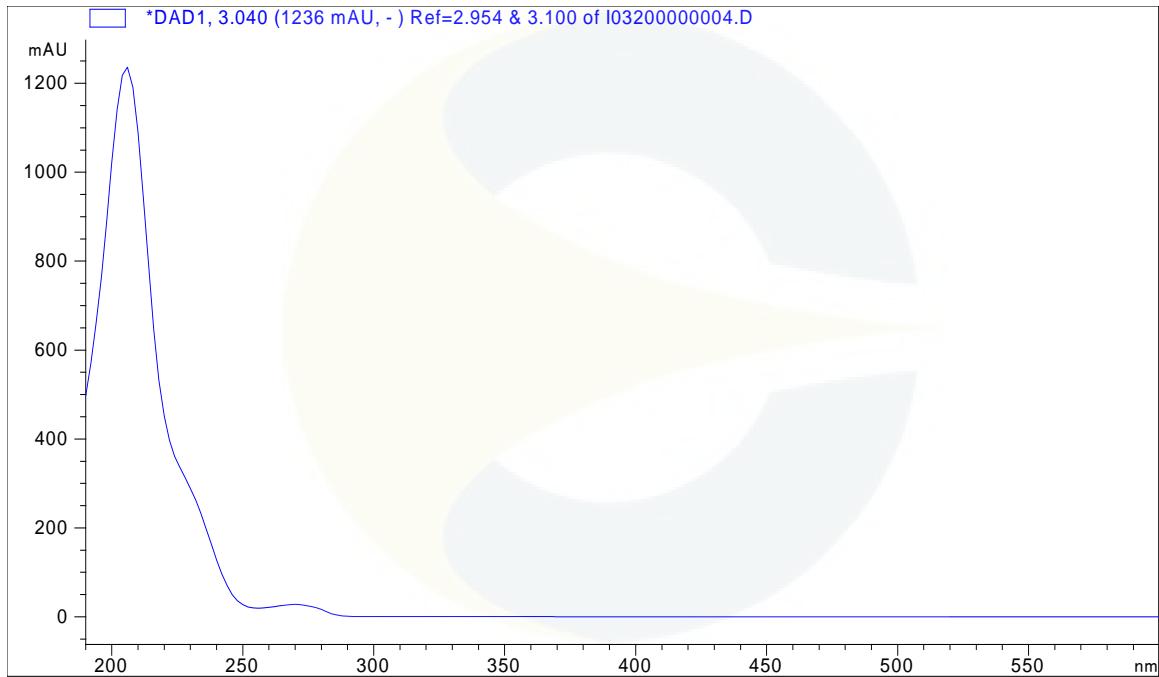


This document is the property of ChromaDex, Inc. and/or its relevant affiliates and contains confidential and proprietary material for the sole use of the intended recipient(s). Any review, use, distribution or disclosure by or to others is strictly prohibited.

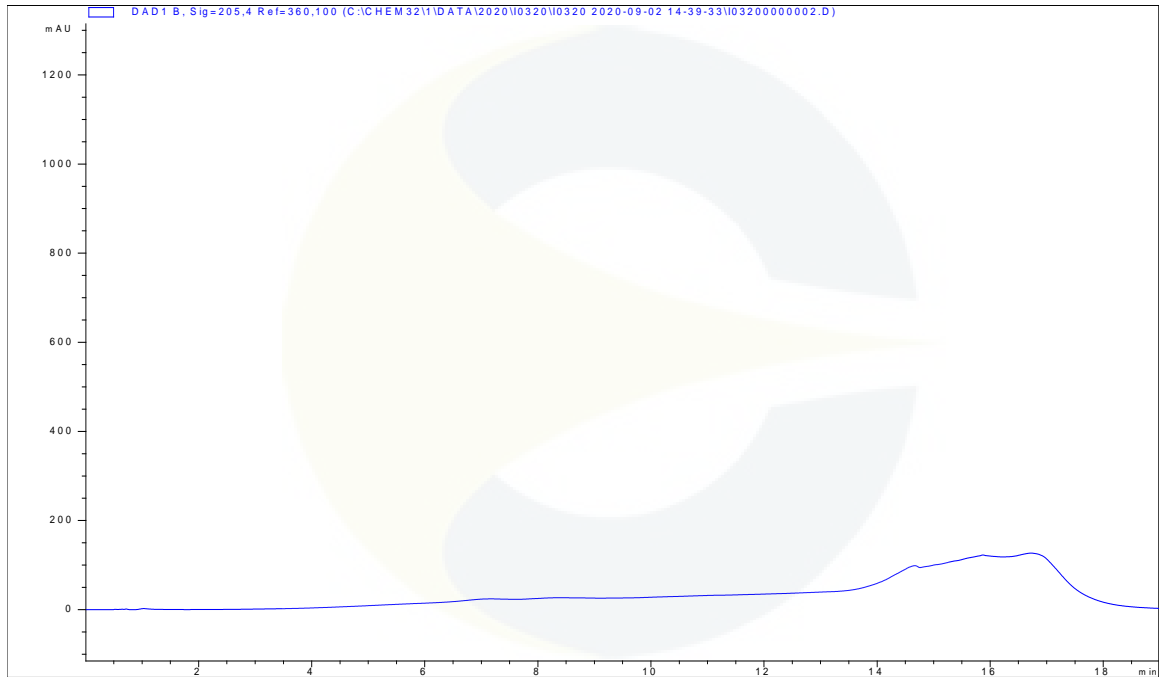
## Certificate of Analysis

For Laboratory Use Only

## UV SPECTRUM AT RT 3.0 MINUTES



## HPLC CHROMATOGRAM OF DILUENT BLANK

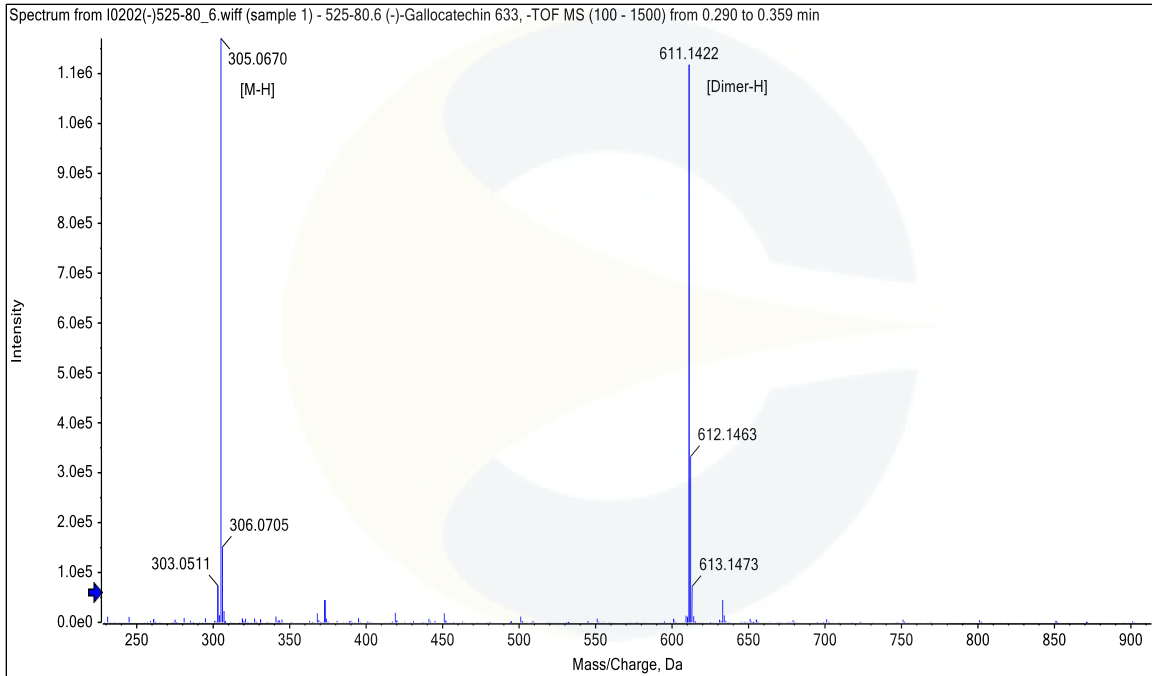


This document is the property of ChromaDex, Inc. and/or its relevant affiliates and contains confidential and proprietary material for the sole use of the intended recipient(s). Any review, use, distribution or disclosure by or to others is strictly prohibited.

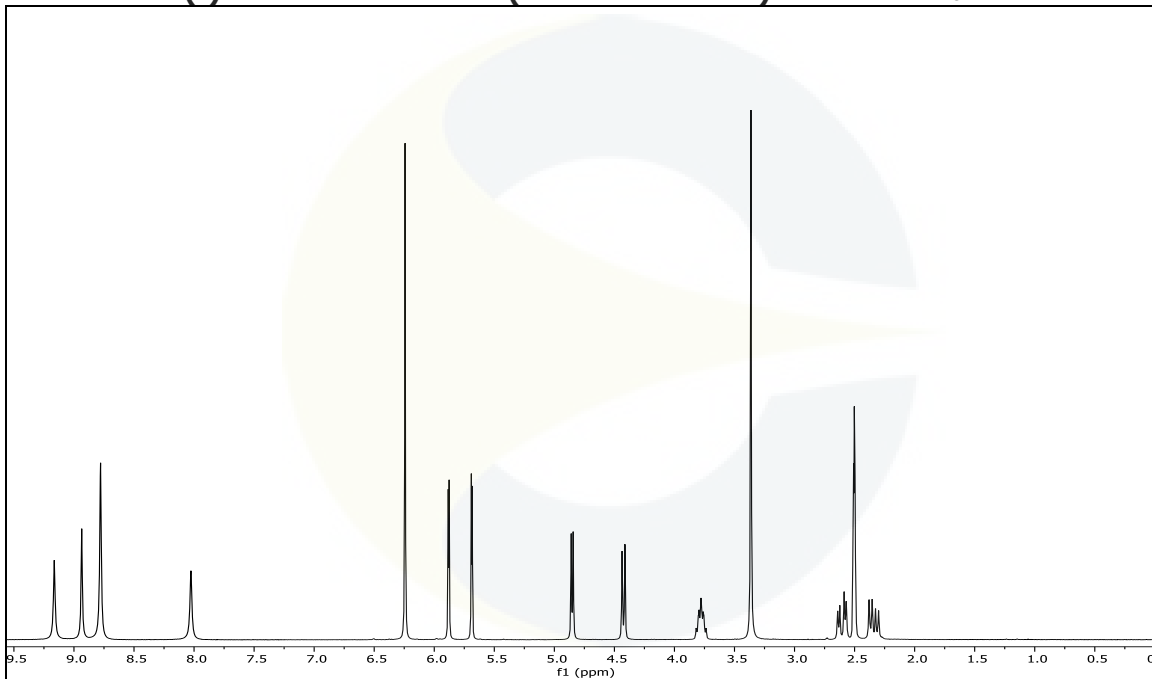
Certificate of Analysis

For Laboratory Use Only

**MASS SPECTRUM OF (-)-GALLOCATECHIN (CDXP-20-00633)**



**<sup>1</sup>H-NMR SPECTRUM OF (-)-GALLOCATECHIN (CDXP-20-00633) IN DMSO-d<sub>6</sub> + TMS**



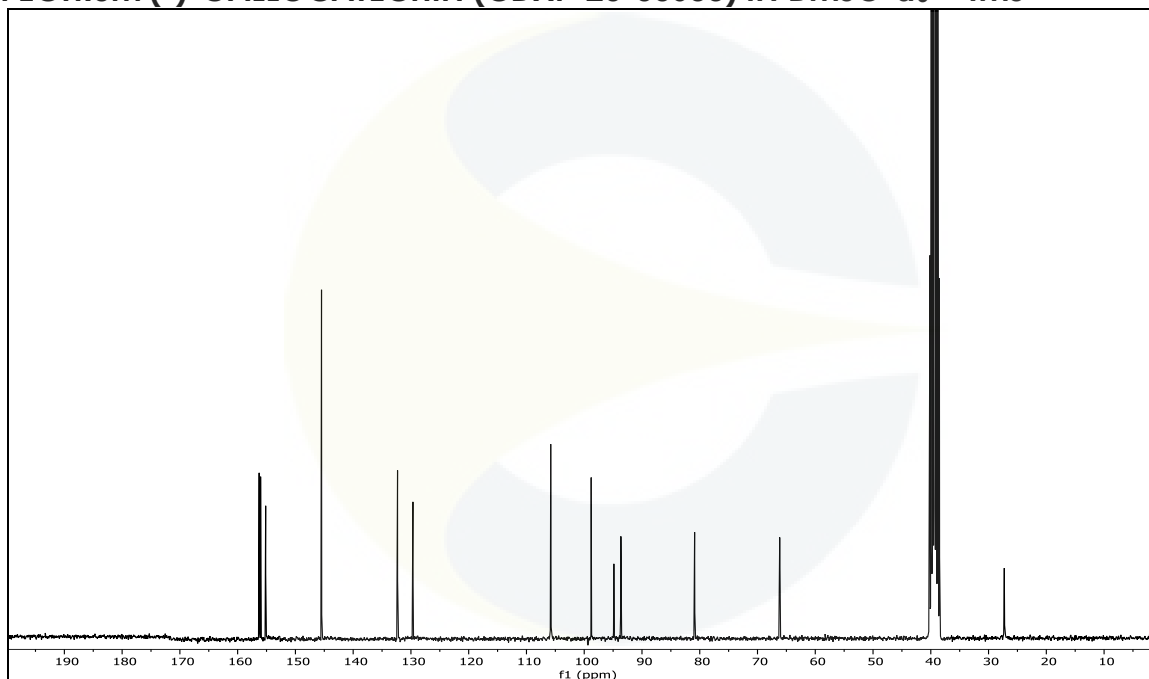
This document is the property of ChromaDex, Inc. and/or its relevant affiliates and contains confidential and proprietary material for the sole use of the intended recipient(s). Any review, use, distribution or disclosure by or to others is strictly prohibited.

10900 Wilshire Blvd., Suite 600, Los Angeles, CA 90024 | T: +1 949-419-0288 | F: +1 949-419-0294 | [www.chromadex.com](http://www.chromadex.com)  
Laboratory address: 1751 S. Fordham St., Suite 350, Longmont, CO 80503

India Contact:  
Life Technologies (India) Pvt. Ltd.  
Ph: +91-11-42208000, 42208111, 42208222, Mobile: +91-9810521400, Fax: +91-11-42208444  
Email: [customerservice@lifetechindia.com](mailto:customerservice@lifetechindia.com) Website: [www.lifetechindia.com](http://www.lifetechindia.com)

## Certificate of Analysis

For Laboratory Use Only

**<sup>13</sup>C-NMR SPECTRUM (-)-GALLOCATECHIN (CDXP-20-00633) IN DMSO-d<sub>6</sub> + TMS**

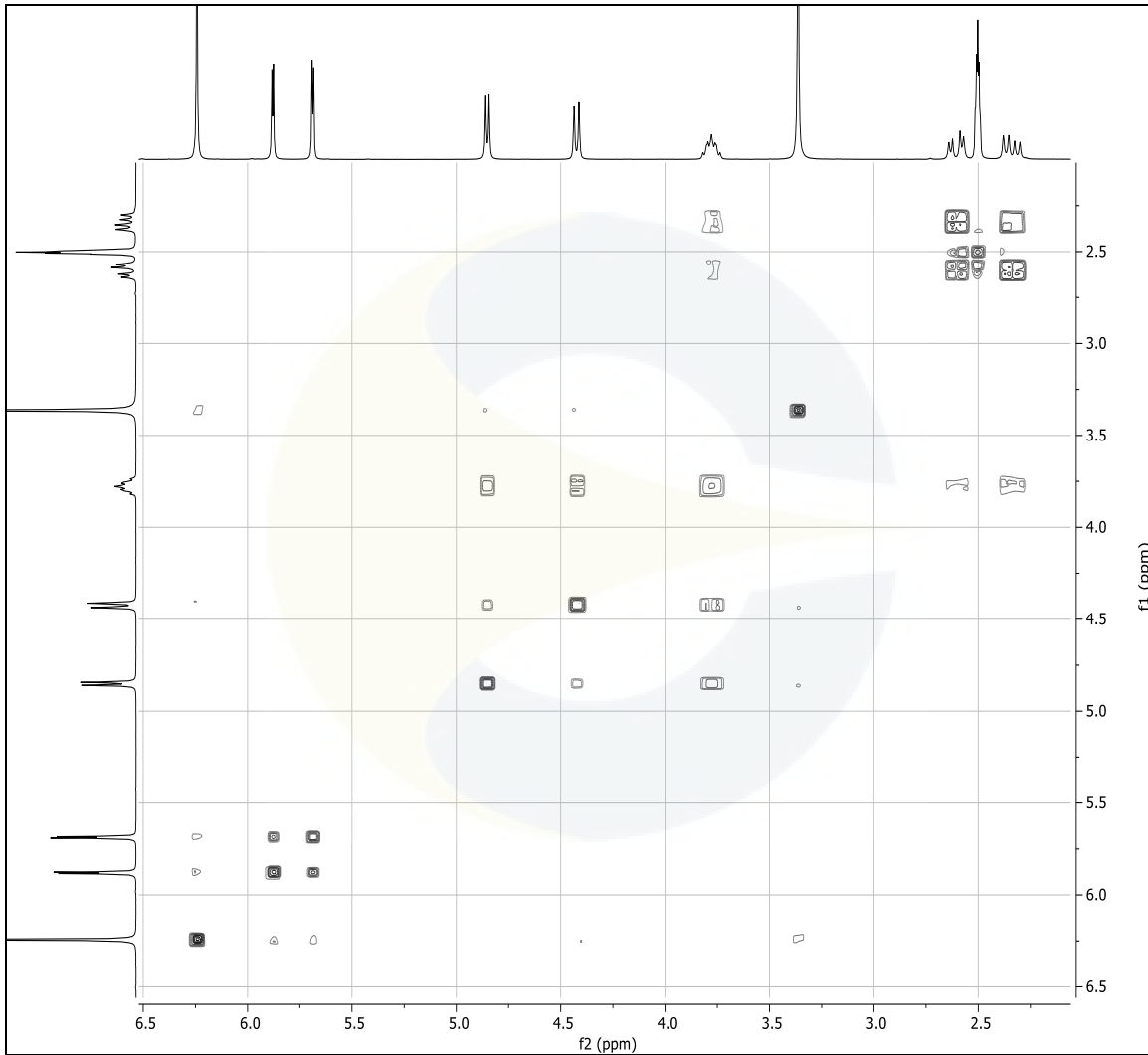
This document is the property of ChromaDex, Inc. and/or its relevant affiliates and contains confidential and proprietary material for the sole use of the intended recipient(s). Any review, use, distribution or disclosure by or to others is strictly prohibited.

10900 Wilshire Blvd., Suite 600, Los Angeles, CA 90024 | T: +1 949-419-0288 | F: +1 949-419-0294 | [www.chromadex.com](http://www.chromadex.com)  
Laboratory address: 1751 S. Fordham St., Suite 350, Longmont, CO 80503

India Contact:  
Life Technologies (India) Pvt. Ltd.  
Ph: +91-11-42208000, 42208111, 42208222, Mobile: +91-9810521400, Fax: +91-11-42208444  
Email: [customerservice@lifetechindia.com](mailto:customerservice@lifetechindia.com) Website: [www.lifetechindia.com](http://www.lifetechindia.com)

## Certificate of Analysis

For Laboratory Use Only

**COSY-NMR SPECTRUM OF (-)-GALLOCATECHIN (CDXP-20-00633) IN DMSO-*d*<sub>6</sub> + TMS**

**REVISION HISTORY**

<u>Revision History</u>	<u>Date of Revision</u>	<u>Document/Changes</u>
00	09/22/2020	New report

This document is the property of ChromaDex, Inc. and/or its relevant affiliates and contains confidential and proprietary material for the sole use of the intended recipient(s). Any review, use, distribution or disclosure by or to others is strictly prohibited.