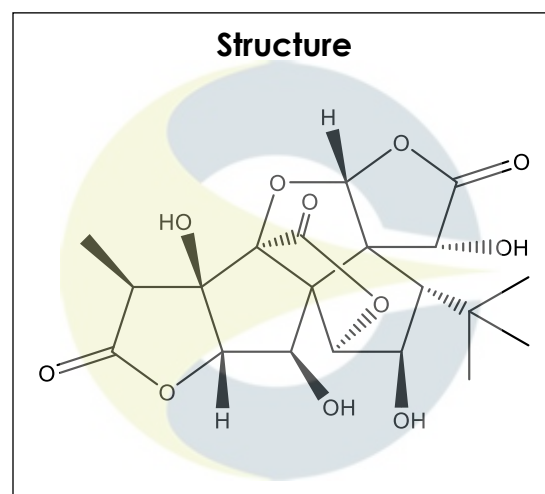


**Certificate of Analysis**

For Laboratory Use Only

<b>PRODUCT NAME</b>	Ginkgolide C
<b>PART NUMBER</b>	00007179
<b>STANDARD TYPE</b>	Primary (P)
<b>LOT NUMBER</b>	00007179-105
<b>REPORT NUMBER</b>	CDXA-RSS-8515-01
<b>SAMPLE NUMBER</b>	CDXP-19-00090
<b>DATE OF SAMPLE</b>	02/04/2019
<b>DATE OF RE-EVALUATION</b>	01/04/2023
<b>DATE OF REPORT</b>	01/31/2023



<b>CHEMICAL NAMES</b>	(1S,2R,3S,3aS,4R,6aR,7aR,7bR,8S,10aS,11R,11aR)-3-(1,1-Dimethylethyl)hexahydro-2,4,7b,11-tetrahydroxy-8-methyl-9H-1,7a-(epoxymethano)-1H,6aH-cyclopenta[c]furo[2,3-b]furo[3',2':3,4]cyclopenta[1,2-d]furan-5,9,12(4H)-trione
<b>CHEMICAL FORMULA</b>	C <sub>20</sub> H <sub>24</sub> O <sub>11</sub>
<b>MOLECULAR WEIGHT (MW)</b>	440.40
<b>CHEMICAL FAMILY</b>	Terpenes
<b>CAS NUMBER</b>	[15291-76-6]
<b>EC#(EINECS)</b>	604-875-5
<b>RTECS</b>	KC9946000

**ANALYTICAL RESULTS**

TEST	METHOD	SPECIFICATION	RESULT
Adjusted Purity	NA	≥ 85%	92.3%
HPLC	0.700.10.2.METH22	≥ 90%	98.0%
NMR	30.1-04-1.0-000733	Conforms to structure	Conforms to structure
Mass Spectrum	99.1-04-3.0-000126	Conforms	Conforms
Residual Solvent*	99.1-CDXA-3.0-000621	NA	MeOH: 0.1%
Water	0.700.12.37	NA	5.7%
Appearance	NA	NA	White powder

\*Testing performed at an ISO 17025 accredited subcontracted laboratory.

ADJUSTED PURITY: 92.3% IS BASED ON (100 - 0.1 SOLVENTS - 5.7 WATER) X 98.0% HPLC

**STORAGE CONDITIONS**

<b>STORAGE</b>	-20 °C in a dry place.
<b>EXPIRATION DATE</b>	01/2028 under the above conditions.

This document is the property of ChromaDex, Inc. and/or its relevant affiliates and contains confidential and proprietary material for the sole use of the intended recipient(s). Any review, use, distribution or disclosure by or to others is strictly prohibited.

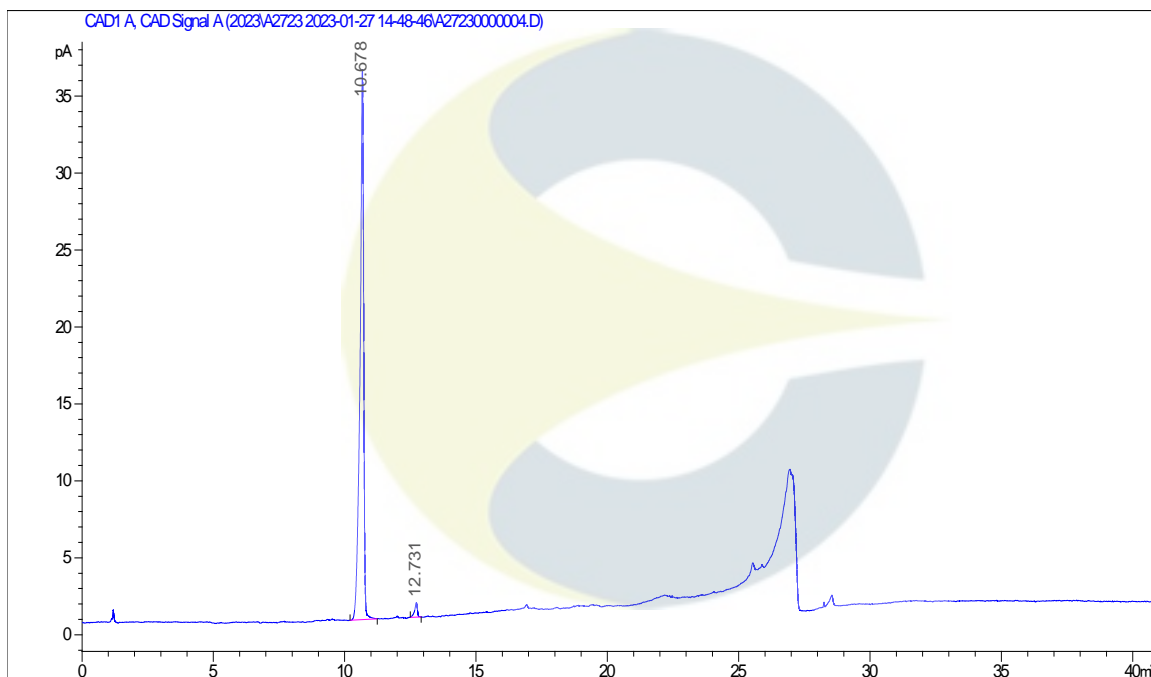
## Certificate of Analysis

*For Laboratory Use Only*

### ANALYTICAL CONDITIONS

<b>INSTRUMENT</b>	AGILENT 1260 HPLC CONNECTED TO DIONEX CORONA VEO CHARGED AEROSOL DETECTOR (CAD); AB-SCIEX 6600 TRIPLE TOF
<b>COLUMN</b>	Phenomenex Luna C18(2) 150 x 2.00 mm, 5 µm particle size
<b>MOBILE PHASE</b>	A - 0.1% Trifluoroacetic acid in Ultrapure water, B - Acetonitrile; Isocratic 5% B for 5 minutes, then increasing to 95% B over 20 minutes. Hold at 95% B for 15 minutes, then decreasing to 5% B over 1 minute.
<b>COLUMN TEMP.</b>	60 °C
<b>FLOW RATE</b>	0.4 mL/minute
<b>INJECTION VOL.</b>	2.0 µL
<b>INJECTION CONC.</b>	1.0 mg/mL in Methanol
<b>DETECTION</b>	CAD

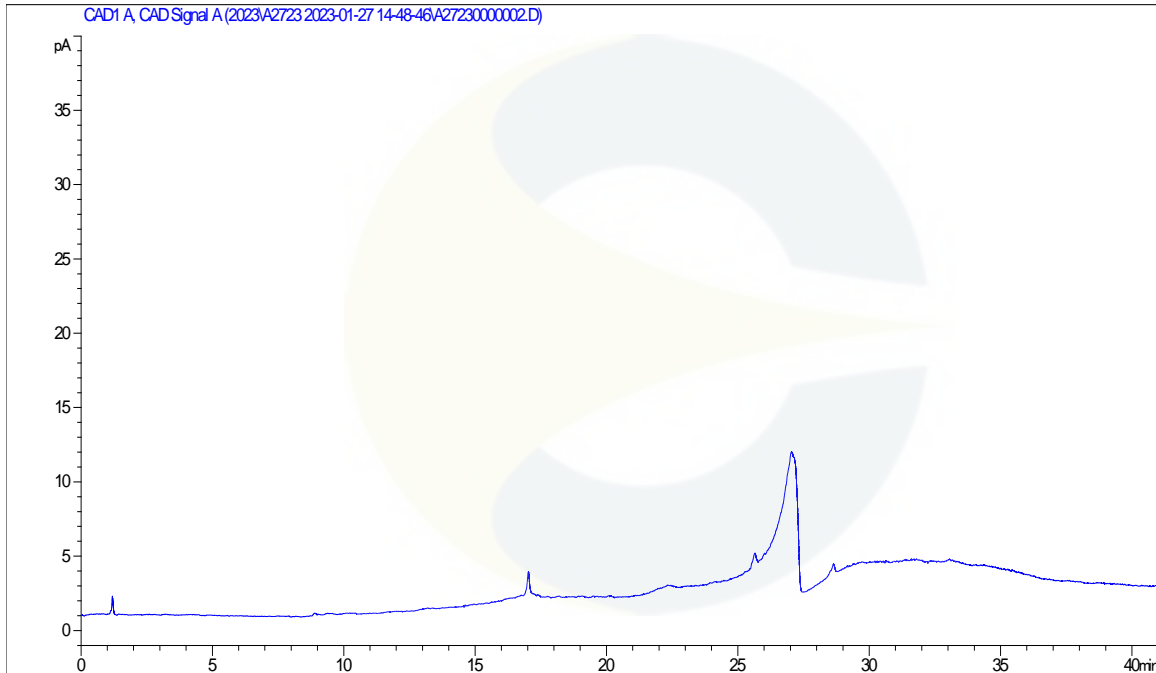
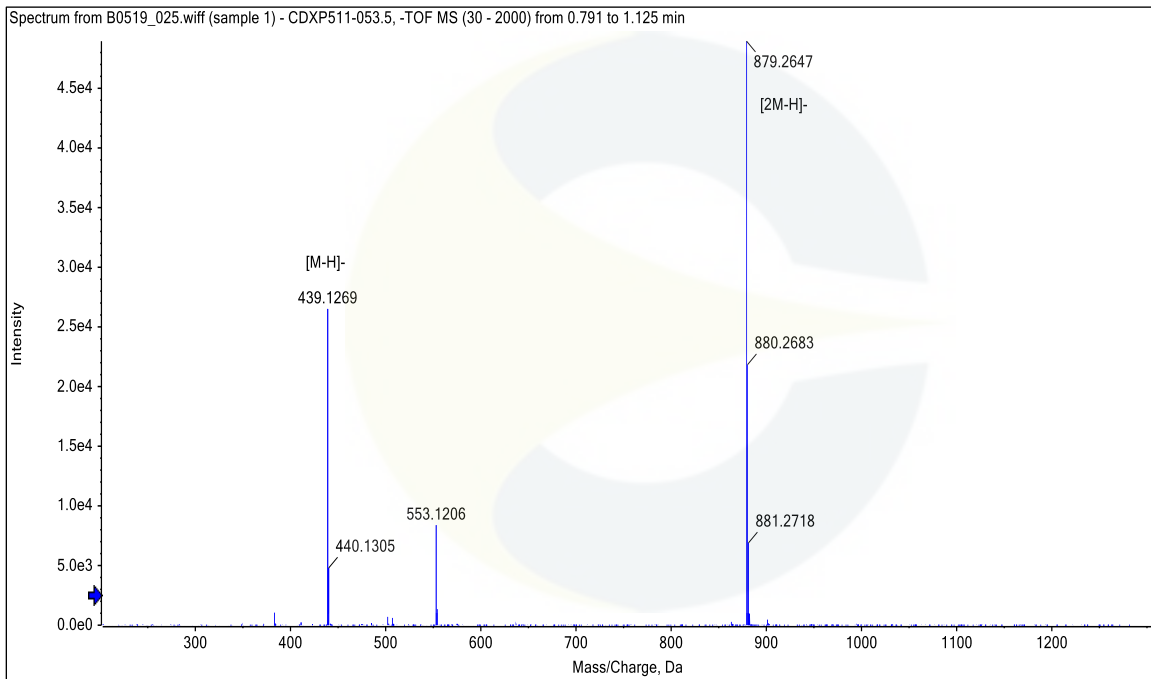
### HPLC CHROMATOGRAM OF GINKGOLIDE C (CDXP-19-00090)



This document is the property of ChromaDex, Inc. and/or its relevant affiliates and contains confidential and proprietary material for the sole use of the intended recipient(s). Any review, use, distribution or disclosure by or to others is strictly prohibited.

## Certificate of Analysis

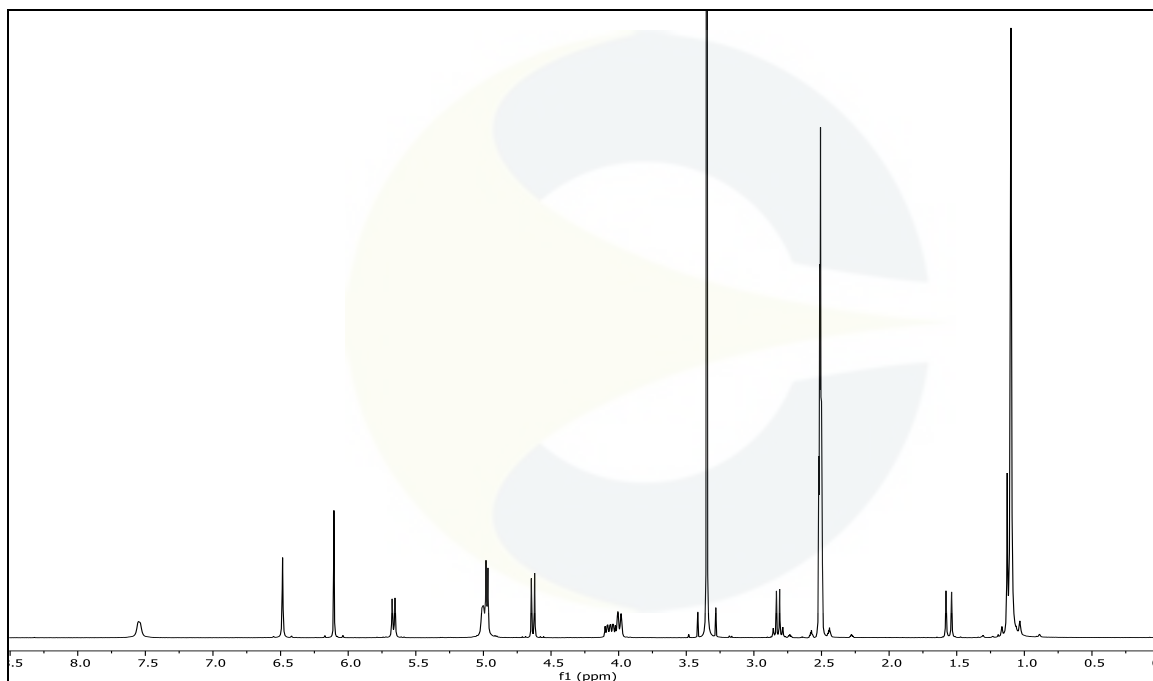
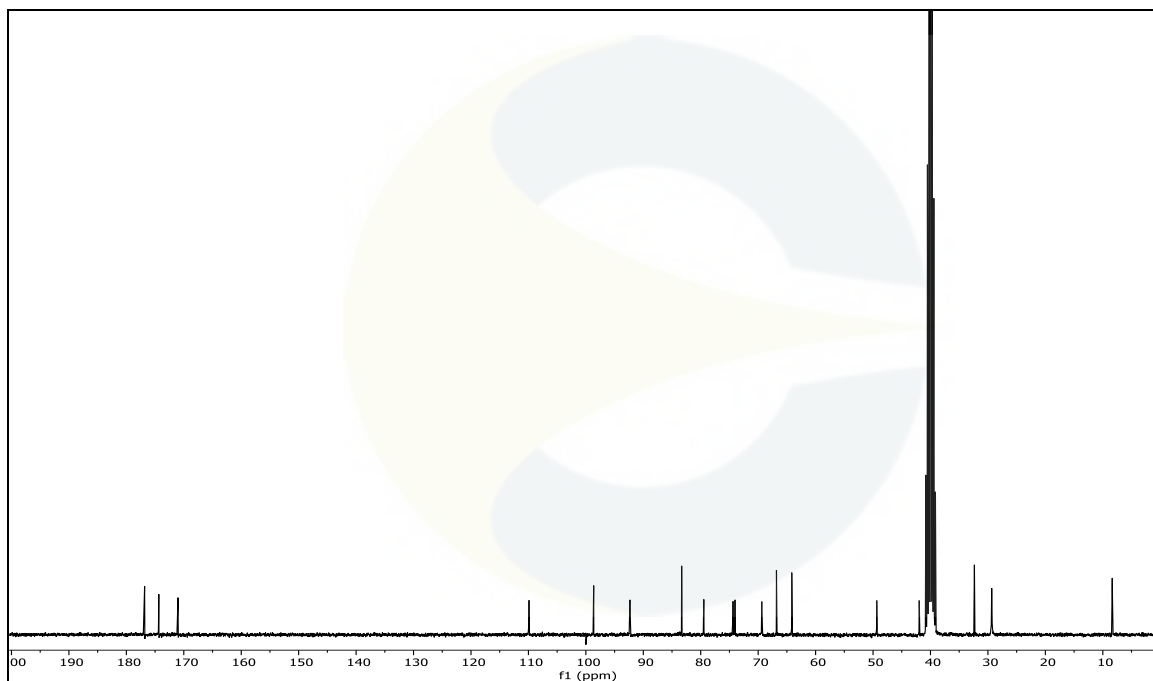
For Laboratory Use Only

**HPLC CHROMATOGRAM OF DILUENT BLANK****MASS SPECTRUM OF GINKGOLIDE C (CDXP-19-00090)**

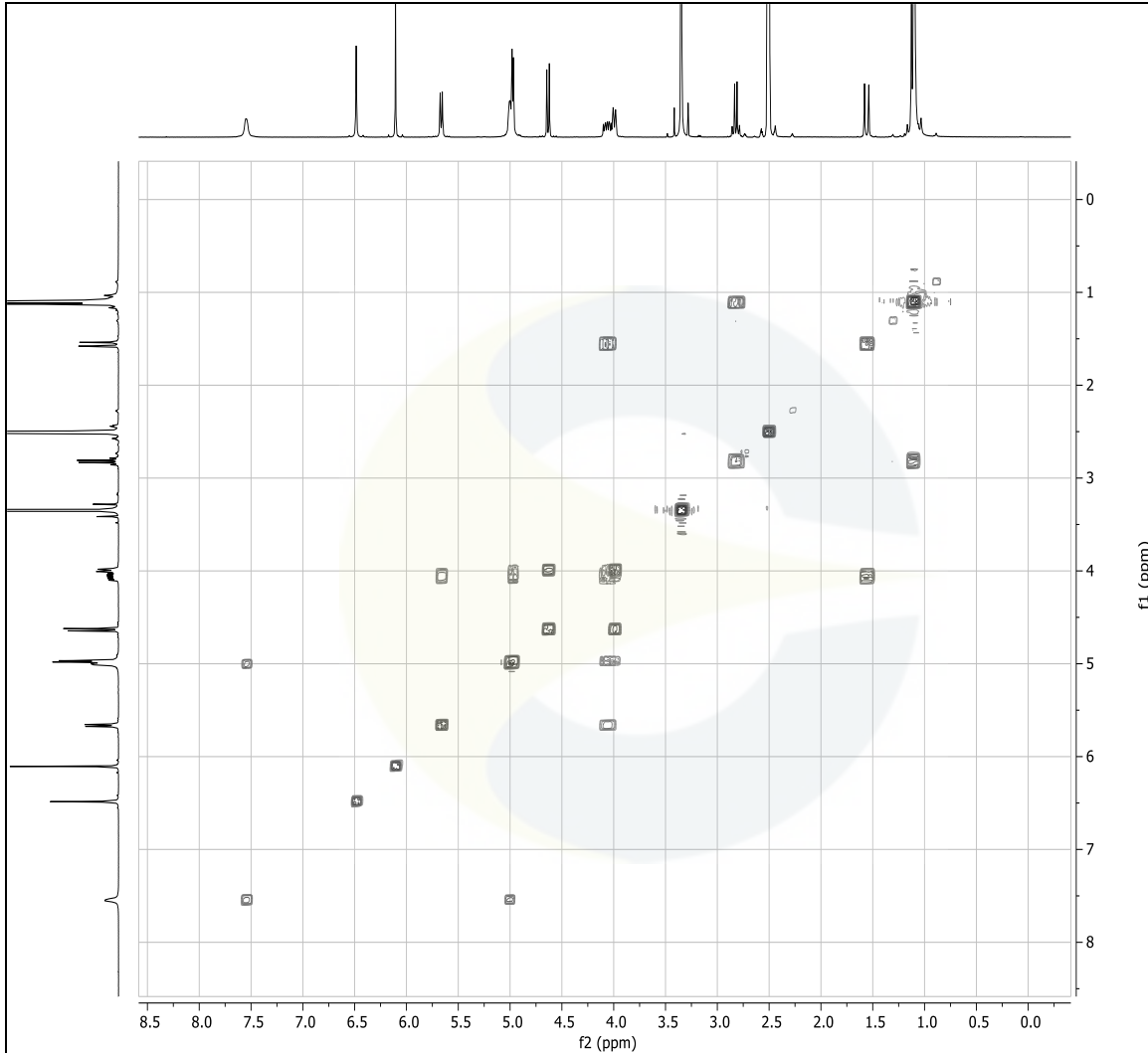
This document is the property of ChromaDex, Inc. and/or its relevant affiliates and contains confidential and proprietary material for the sole use of the intended recipient(s). Any review, use, distribution or disclosure by or to others is strictly prohibited.

## Certificate of Analysis

For Laboratory Use Only

**<sup>1</sup>H-NMR SPECTRUM OF GINKGOLIDE C (CDXP-19-00090) IN DMSO-*d*<sub>6</sub>****<sup>13</sup>C-NMR SPECTRUM OF GINKGOLIDE C (CDXP-19-00090) IN DMSO-*d*<sub>6</sub>**

This document is the property of ChromaDex, Inc. and/or its relevant affiliates and contains confidential and proprietary material for the sole use of the intended recipient(s). Any review, use, distribution or disclosure by or to others is strictly prohibited.

Certificate of Analysis
For Laboratory Use Only
**COSY-NMR SPECTRUM OF GINKGOLIDE C (CDXP-19-00090) IN DMSO-d<sub>6</sub>**

**REVISION HISTORY**

<u>Revision History</u>	<u>Date of Revision</u>	<u>Document/Changes</u>
00	02/28/2019	New report
01	01/31/2023	Material passed reevaluation by HPLC and KF. Updated analytical results, analytical conditions, chromatograms, and expiration date.

This document is the property of ChromaDex, Inc. and/or its relevant affiliates and contains confidential and proprietary material for the sole use of the intended recipient(s). Any review, use, distribution or disclosure by or to others is strictly prohibited.