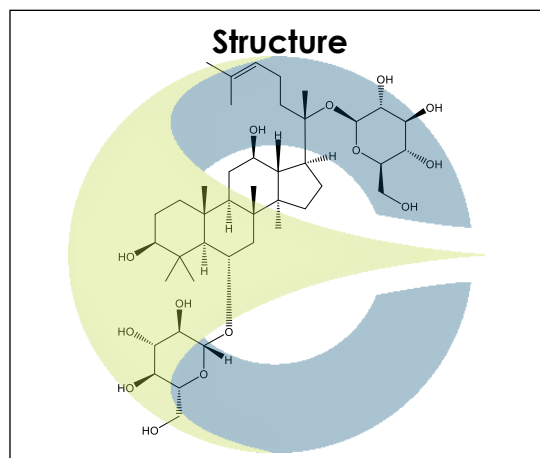


Certificate of Analysis

For Laboratory Use Only

PRODUCT NAME	Ginsenoside Rg1
PART NUMBER	00007220
STANDARD TYPE	Primary (P)
LOT NUMBER	00007220-206
REPORT NUMBER	CDXA-RSS-9852-00
SAMPLE NUMBER	CDXP-22-00553
DATE OF SAMPLE	06/16/2022
DATE OF REPORT	07/21/2022



CHEMICAL NAMES	(3β,6α,12β)-3,12-Dihydroxydammar-24-ene-6,20-diyl-bis-β-D-glucopyranoside; Ginsenoside A ₂ ; Panaxoside A; Panaxoside Rg1; Sanchinoside C ₁
CHEMICAL FORMULA	C ₄₂ H ₇₂ O ₁₄
MOLECULAR WEIGHT (MW)	801.01
CHEMICAL FAMILY	Saponins
CAS NUMBER	[22427-39-0]
EC#(EINECS)	244-989-9
RTECS	LY9537200

analytical results

TEST	METHOD	SPECIFICATION	RESULT
Adjusted Purity	NA	≥ 85%	94.4%
HPLC	0.700.10.2.METH102	≥ 90%	98.5%
NMR	0.700.12.4	Conforms to structure	Conforms to structure
Mass Spectrum	0.700.12.27	Conforms	Conforms
Residual Solvent*	USP <467>	NA	1.4%
Water	0.700.12.37	NA	2.8%
Appearance	NA	NA	White powder

*Testing performed at an ISO 17025 accredited subcontracted laboratory.

ADJUSTED PURITY: 94.4% IS BASED ON (100 - 1.4 SOLVENTS - 2.8 WATER) X 98.5% HPLC

STORAGE CONDITIONS

STORAGE	+4 °C in a dry place.
EXPIRATION DATE	06/2027 under the above conditions.

This document is the property of ChromaDex, Inc. and/or its relevant affiliates and contains confidential and proprietary material for the sole use of the intended recipient(s). Any review, use, distribution or disclosure by or to others is strictly prohibited.

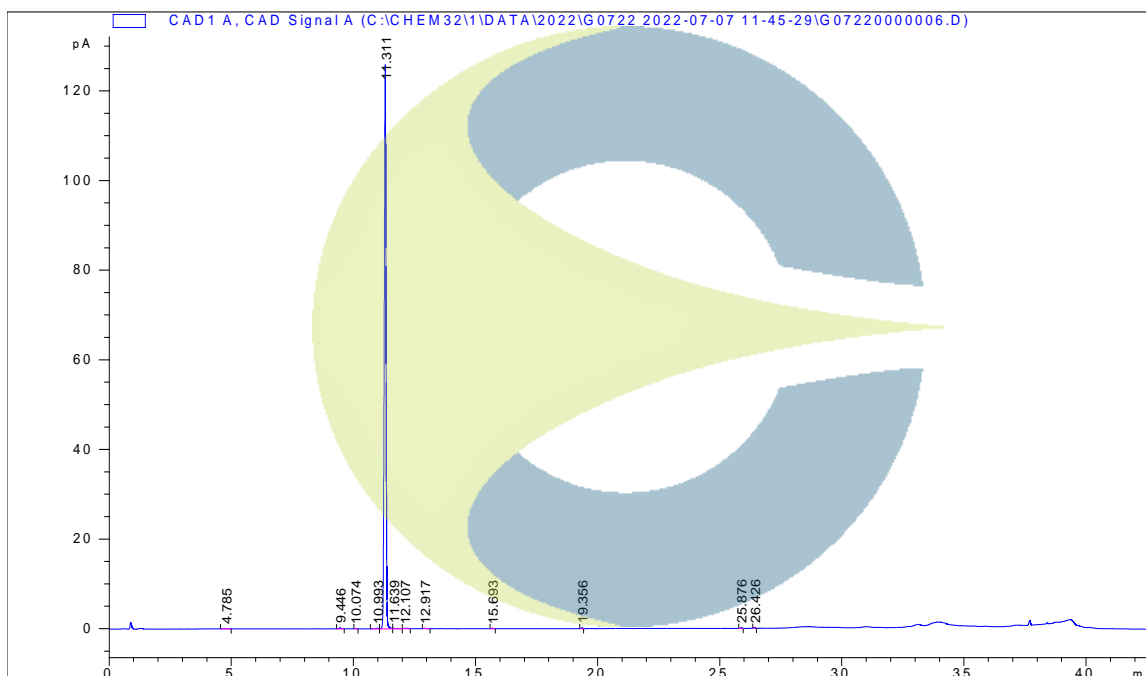
Certificate of Analysis

For Laboratory Use Only

ANALYTICAL CONDITIONS

INSTRUMENT	AGILENT 1260 HPLC UV-VIS (DAD) CONNECTED TO DIONEX CORONA VEO CHARGED AEROSOL DETECTOR (CAD); AB-SCIEX 6600 TRIPLE TOF
COLUMN	Phenomenex Kinetex C18 150 x 4.6 mm, 2.6 μ m particle size
MOBILE PHASE	A - Ultrapure water, B - Acetonitrile; 15% B increasing to 30% B over 15 minutes, increasing to 32% B over 1 minute, then increasing to 38% B over 3 minutes, then increasing to 43% B over 5 minutes, then increasing to 55% B over 3 minutes, then increasing to 65% B over 4 minutes, then increasing to 70% B over 4 minutes, then increasing to 90% B over 3 minutes.
COLUMN TEMP.	40 $^{\circ}$ C
FLOW RATE	2.0 mL/minute
INJECTION VOL.	10.0 μ L
INJECTION CONC.	1.0 mg/mL in Methanol
DETECTION	CAD

HPLC CHROMATOGRAM OF GINSENOSEIDE RG1 (CDXP-22-00553)

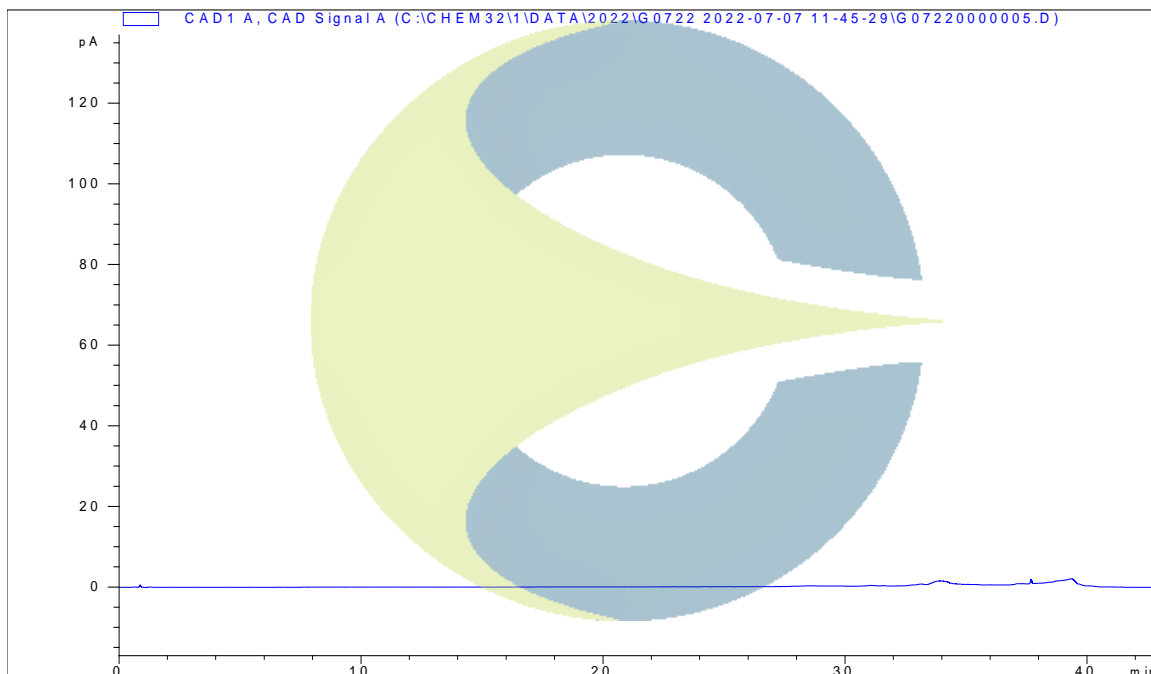


This document is the property of ChromaDex, Inc. and/or its relevant affiliates and contains confidential and proprietary material for the sole use of the intended recipient(s). Any review, use, distribution or disclosure by or to others is strictly prohibited.

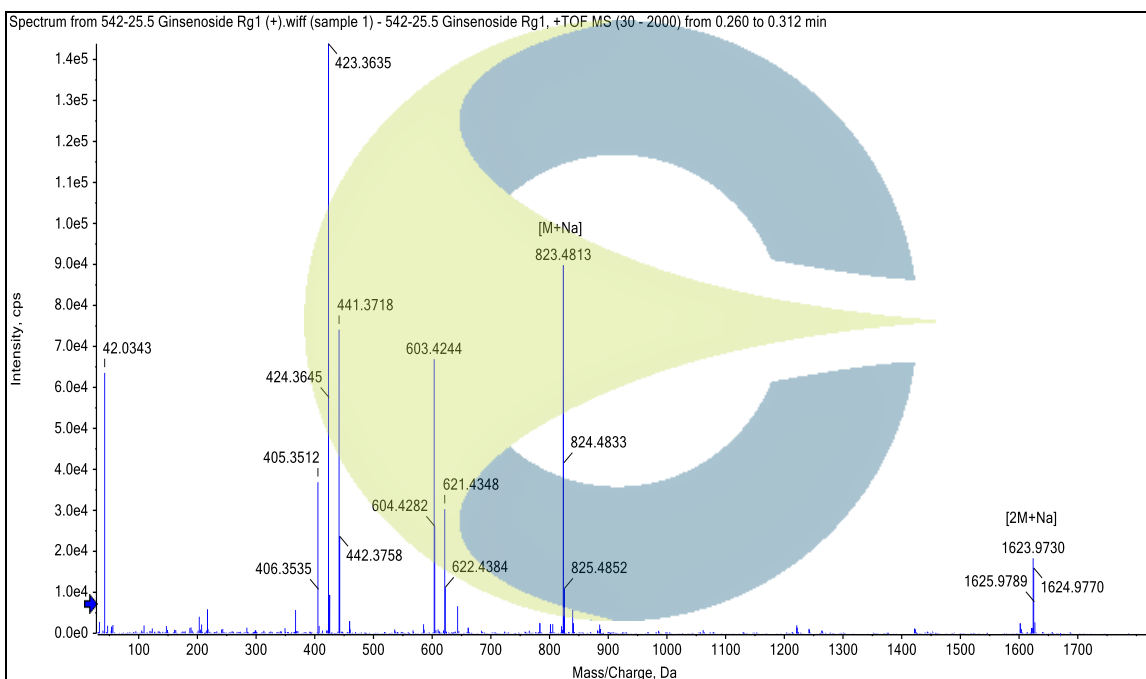
Certificate of Analysis

For Laboratory Use Only

HPLC CHROMATOGRAM OF DILUENT BLANK



MASS SPECTRUM OF GINSENOSIDE RG1 (CDXP-22-00553)

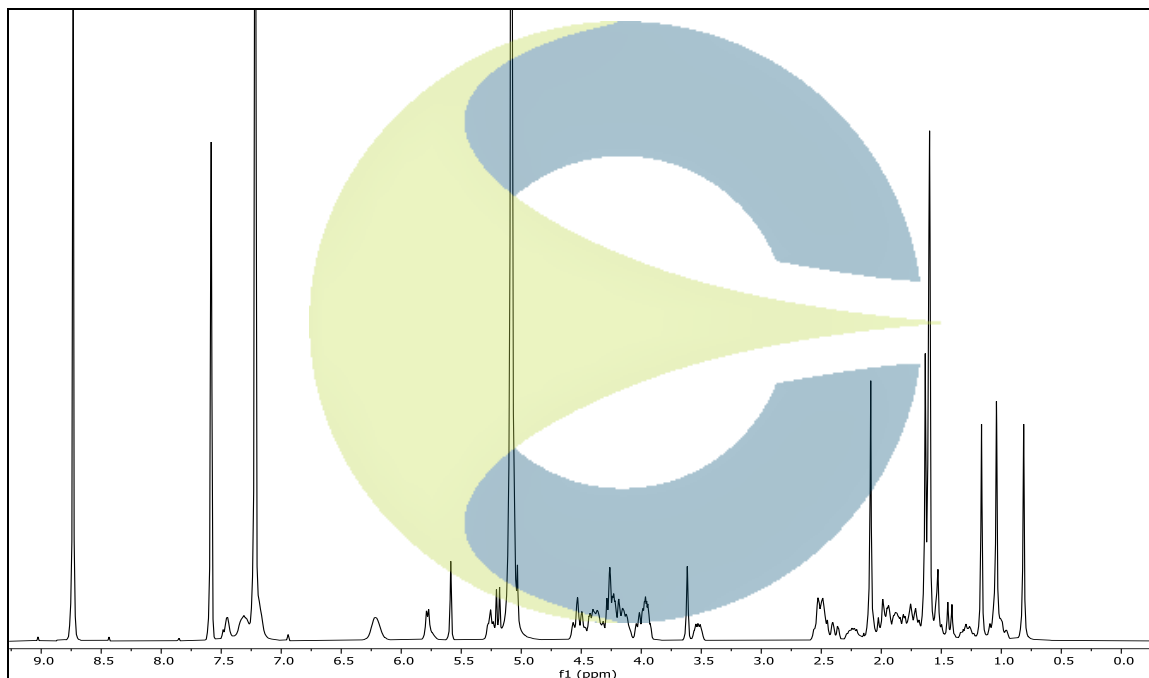


This document is the property of ChromaDex, Inc. and/or its relevant affiliates and contains confidential and proprietary material for the sole use of the intended recipient(s). Any review, use, distribution or disclosure by or to others is strictly prohibited.

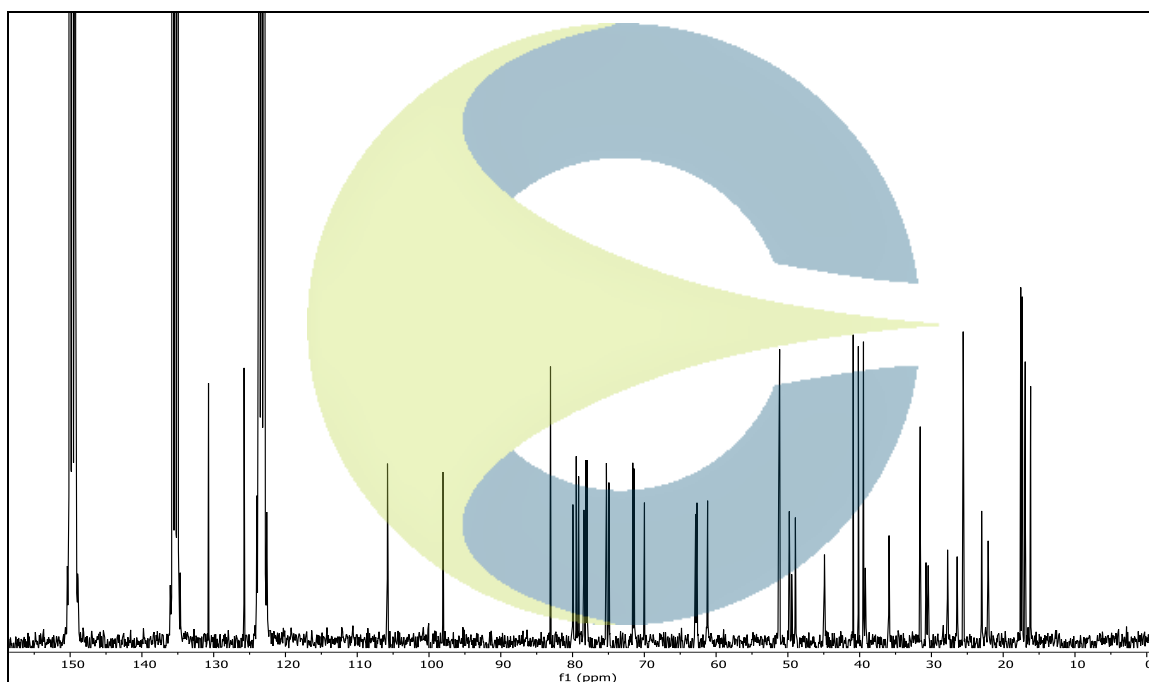
Certificate of Analysis

For Laboratory Use Only

¹H-NMR SPECTRUM OF GINSENOSIDE RG1 (CDXP-22-00553) IN PYRIDINE-d₅



¹³C-NMR SPECTRUM GINSENOSIDE RG1 (CDXP-22-00553) IN PYRIDINE-d₅

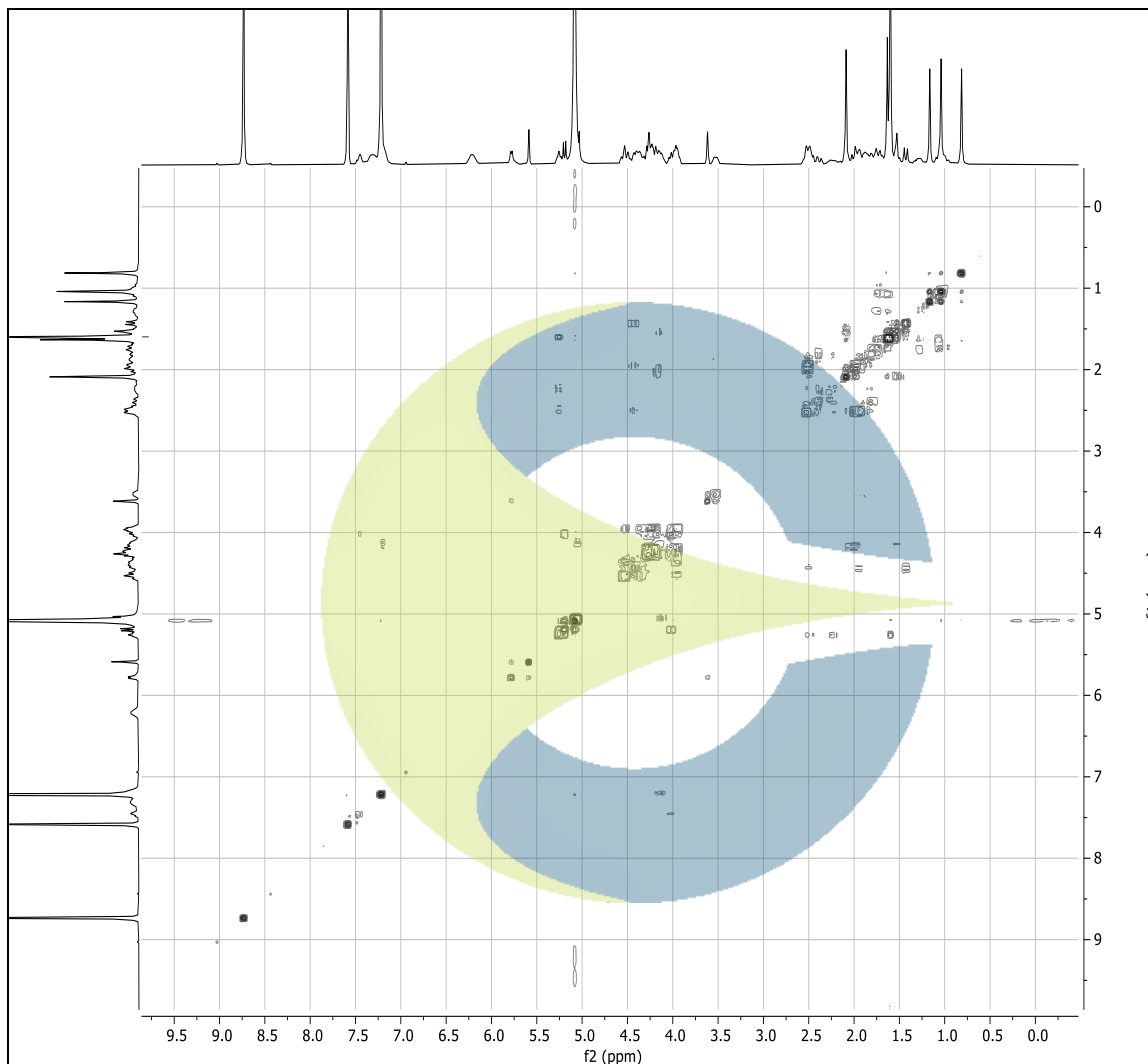


This document is the property of ChromaDex, Inc. and/or its relevant affiliates and contains confidential and proprietary material for the sole use of the intended recipient(s). Any review, use, distribution or disclosure by or to others is strictly prohibited.

Certificate of Analysis

For Laboratory Use Only

COSY-NMR SPECTRUM OF GINSENOSIDE RG1 (CDXP-22-00553) IN PYRIDINE-*d*₅



REVISION HISTORY

<u>Revision History</u>	<u>Date of Revision</u>	<u>Document/Changes</u>
00	07/20/2022	New report

This document is the property of ChromaDex, Inc. and/or its relevant affiliates and contains confidential and proprietary material for the sole use of the intended recipient(s). Any review, use, distribution or disclosure by or to others is strictly prohibited.