

HOT FIREPol® Blend Master Mix Ready to Load

Ready to load hot-start PCR master mix for more demanding PCR assays



96 /100 24 Citations

increased yield, sensitivity and specificity
 up to 5x higher fidelity
 suitable for templates up to 5 kb
 reduced primer dimer formation
 load directly on gel after PCR

Ordering

Choose Product Size

1 ml | 250 rxn

5 x 1ml | 1250 rxn

10 x 1ml | 2500 rxn

20 ml | 5000 rxn

0.1 ml | 25 rxn **free sample**

REQUEST FOR BULK SIZE

Some applications of this product may require a license which is not provided by the purchase of this product.

For research use only.

Description

HOT FIREPol® Blend Master Mix Ready to Load is a premixed ready-to-use solution containing all reagents required for PCR (except template, primers, and water), an additional compound needed for direct loading onto an agarose gel, and two tracking dyes (blue and yellow) that allow monitoring progress during electrophoresis.

HOT FIREPol® Blend Master Mix contains two carefully optimized enzymes – HOT FIREPol® DNA polymerase and a proofreading polymerase. This enzyme blend has both the 5'→3' exonuclease activity as well as the 3'→5' proofreading activity. HOT FIREPol® Blend Master Mix exhibits an increased fidelity (up to fivefold) compared to regular Taq polymerase.

Properties

Concentration: 5x

Hot-start: yes, initial activation in 12-15 min

Ready to load: yes

Fidelity: 5 x Taq

Cloning Type: T/A cloning and Blunt-end cloning

Amplicon Size: up to 5 kb

In addition, the mix also allows the amplification of longer fragments.

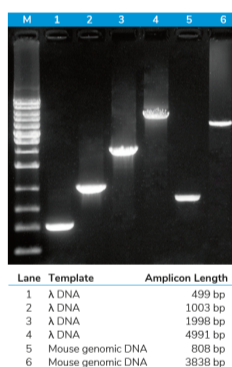
Generated PCR products are compatible with blunt-end and T/A cloning procedures.

HOT FIREPol® Blend Master Mix exhibits an increased fidelity (up to fivefold) compared to regular Taq polymerase.

Recommendations

We recommend using HOT FIREPol® Blend Master Mix Ready to Load in any PCR application that will be visualized by agarose gel electrophoresis and ethidium bromide staining.

HOT FIREPol® Blend Master Mix Ready to Load is not recommended for use in applications where spectrophotometric measurements (absorbance or fluorescence) are necessary because yellow and blue dyes can interfere with these applications.



Amplicons of various length from different templates

Mix Components

HOT FIREPol® DNA polymerase: chemically modified FIREPol® DNA Polymerase enabling hot-start

Proofreading enzyme: to enhance fidelity

5x Blend Master Mix Buffer with 7.5 mM MgCl₂: 1x PCR solution – 1.5 mM MgCl₂

1 mM dNTPs of each: 1x PCR solution – 200 μM dATP, 200 μM dCTP, 200 μM dGTP and 200 μM dTTP

Bovine serum albumin (BSA) to enhance PCR reaction

Blue dye: migration equivalent to 3.5-4.5 kb DNA fragment

Yellow dye: migration rate in excess of primers in 1% agarose gel: <35-45 bp

Compound that increases sample density for direct loading

Reference:

“ Solis BioDyne has proven to be a great company that has customer-oriented services in molecular work. HOT FIREPol Blend Master Mix is convenient to use, store and produces high quality results. I know what I am saying because it outperforms same products from other companies. ”

EMMY CHEPKOECH
PhD student
University of Eldoret, Kenya

India Contact:
Life Technologies (India) Pvt. Ltd.
306, Aggarwal City Mall, Opposite M2K Pitampura,
Delhi – 110034 (INDIA). Ph: +91-11-42208000, 42208111, 42208222
Mobile: +91-9810521400
Fax: +91-11-42208444
Email: customerservice@lifetechindia.com
Web: www.lifetechindia.com