

# HOT FIREPoI® MultiPlex Mix Ready To Load

Hot-start master mix for high throughput applications with ready-to-load feature



- analyze multiple targets per reaction
- increased sensitivity and yield
- prevents primer dimer formation
- reaction set-up and shipment without dry ice

## Ordering

### Choose Product Size

- 1 ml | 250 rxn
- 5 x 1ml | 1250 rxn
- 10 x 1ml | 2500 rxn
- 20 ml | 5000 rxn
- 0.1 ml | 25 rxn **free sample**

REQUEST FOR BULK SIZE

Some applications of this product may require a license which is not provided by the purchase of this product.

**For research use only.**

## Description

HOT FIREPoI® MultiPlex Mix Ready to Load is a premixed ready-to-use solution containing all reagents required for hot-start multiplex PCR (except template, primers, and water) and an additional compound needed for direct loading onto an agarose gel and two tracking dyes (blue and yellow) that allow monitoring progress during electrophoresis.

Generated PCR products are compatible with T/A cloning procedures.

## Properties

**Concentration:** 5x

**Hot-start:** yes, initial activation in 12-15 min

**Ready to load:** yes

**Fidelity:** 1 x Taq

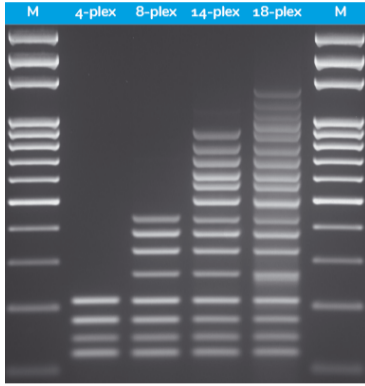
**Cloning Type:** T/A cloning

**Multiplexing:** tested with up to 18 targets (depending on amplicon length)

**Amplicon Size:** up to 5 kb

We recommend using HOT FIREPol<sup>®</sup> MultiPlex Mix Ready To Load in any PCR application that will be visualized by agarose gel electrophoresis and ethidium bromide staining.

HOT FIREPol<sup>®</sup> MultiPlex Mix Ready To Load is not recommended for use in applications where spectrophotometric measurements (absorbance or fluorescence) are necessary because yellow and blue dyes can interfere with these applications.



Sensitive and specific results

## Mix Components

**HOT FIREPol<sup>®</sup> DNA polymerase:** chemically modified FIREPol<sup>®</sup> DNA Polymerase enabling hot-start

**5x Multiplex Buffer with 10 mM MgCl<sub>2</sub>:** 1x PCR solution – 2 mM MgCl<sub>2</sub>

**dNTPs: dATP, dCTP, dGTP and dTTP**

**Bovine serum albumin (BSA)** to enhance PCR reaction

**Blue dye:** migration equivalent to 3.5-4.5 kb DNA fragment

**Yellow dye:** migration equivalent to 35-45 bp DNA fragment

**Compound that increases sample density for direct loading**

### India Contact:

#### **Life Technologies (India) Pvt. Ltd.**

306, Aggarwal City Mall, Opposite M2K Pitampura,  
Delhi – 110034 (INDIA). Ph: +91-11-42208000, 42208111, 42208222

Mobile: +91-9810521400

Fax: +91-11-42208444

Email: [customerservice@lifetechindia.com](mailto:customerservice@lifetechindia.com)

Web: [www.lifetechindia.com](http://www.lifetechindia.com)