

1 kb DNA Ladder Ready to Load

13 discrete DNA fragments ranging from 250 bp to 10 000 bp



94 /100 21 Citations

The 1 kb DNA Ladder is a ready-to-use molecular weight marker suitable for DNA fragment size determination on gel electrophoresis.

Thirteen crisp bands
stable at room temperature
two visualization dyes

Ordering

Choose Product Size

50 µg | 500 µl

250 (5 x 50 µg) | 2,5 ml

500 (10 x 50 µg) | 5,0 ml

1.5 µg | 15 µl **free sample**

REQUEST FOR BULK SIZE

Some applications of this product may require a license which is not provided by the purchase of this product.

For research use only.

Description

Solis BioDyne 1 kb DNA Ladder Ready to Load is designed for sizing and approximate quantification of double-stranded DNA in the range of 250 bp to 10,000 bp.

Solis BioDyne 1 kb DNA Ladder Ready to Load is composed of thirteen DNA fragments (in base pairs): 250, 500, 750, **1000**, 1500, 2000, 2500, **3000**, 4000, 5000, 6000, 8000, 10000. It contains two reference bands (1000 and 3000 bp) for easy orientation.

It contains two dyes: bromophenol blue and xylene cyanole which serve as visual aid to monitor the progress of migration during agarose gel electrophoresis.

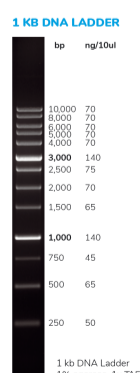
Properties

Concentration: 0.1 µg/µl

Size range: 250 bp - 10 000 bp

No of bands: 13

Storage Solution: 10 mM EDTA, 10% glycerol, 0.015% bromophenol blue, 0.015% xylene cyanole and 0.17% SDS.



India Contact:

Life Technologies (India) Pvt. Ltd.

306, Aggarwal City Mall, Opposite M2K Pitampura, Delhi – 110034 (INDIA). Ph: +91-11-42208000, 42208111, 42208222

Mobile: +91-9810521400

Fax: +91-11-42208444

Email: customerservice@lifetechindia.com

Web: www.lifetechindia.com