

SolisFAST® Master Mix, Ready to Load

NEW!

Fast single- and multiplex endpoint PCR assays!

Extremely fast end-point PCR mix for robust and accurate target detection for single- and multiplex reactions

PCR Results in 20 minutes

analyze one or multiple targets per reaction

load directly on gel after PCR



Ordering

Choose Product Size

1 ml | 250 rxn

5 x 1ml | 1250 rxn

20 ml | 5000 rxn

0.2 ml | 50 rxn **free sample**

REQUEST FOR BULK SIZE

Some applications of this product may require a license which is not provided by the purchase of this product.

For research use only.

Description

SolisFAST® Master Mix is a 5x-concentrated, ready-to-use solution for fast singleplex and multiplex endpoint PCR assays. The mix allows amplification of up to 5 kb fragments from low complexity DNA templates (e.g. lambda, plasmid DNA), and up to 3 kb from complex DNA templates (e.g. human genomic DNA).

Mix Properties

Concentration: 5x

Hot-start: yes, 2 minutes initial incubation at 98 °C

Ready-to-load: yes, includes two loading dyes

Cloning Type: T/A cloning

Amplicon Size: up to 5 kb

The mix can be loaded directly to gel for post PCR analysis.

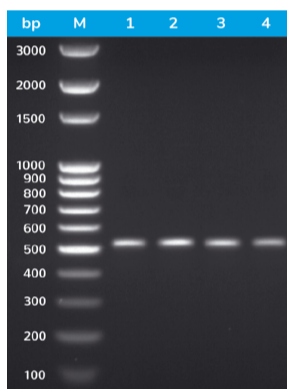
Mix Components:

SolisFAST® DNA Polymerase: *In silico* designed analogue of Taq DNA polymerase with enhanced stability at room temperature, fast hot-start and faster extension rates compared to the wild-type Taq DNA polymerase.

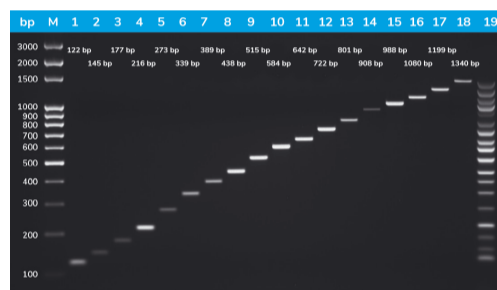
PCR buffer: Includes 17.5 mM MgCl₂ (1x PCR solution 3.5 mM MgCl₂), dNTPs (dATP, dCTP, dGTP, dTTP), additives that maximize efficiency of PCR

Green loading dye¹: Mix of blue and yellow dye to allow tracking of DNA during electrophoresis.

¹The mix is not recommended for use in applications where spectrophotometric measurements are necessary (e.g. Sanger sequencing). Migration speed: blue dye – TBE: ~3.5 kb, TAE: ~4.5 kb; yellow dye – TBE: ~35 bp, TAE: ~45 bp).



PCR results in 20 minutes



Excellent single- and multiplex PCR results

India Contact:

Life Technologies (India) Pvt. Ltd.

306, Aggarwal City Mall, Opposite M2K Pitampura,

Delhi – 110034 (INDIA). Ph: +91-11-42208000, 42208111, 42208222

Mobile: +91-9810521400

Fax: +91-11-42208444

Email: customerservice@lifetechindia.com

Web: www.lifetechindia.com