

# SolisFAST® Master Mix with UNG, Ready to Load

## Fast single- and multiplex endpoint PCR assays!



Extremely fast end-point PCR mix for robust and accurate target detection for single- and multiplex reactions

PCR Results in 20 minutes

analyze one or multiple targets per reaction

contains dUTP and UNG to prevent cross-contamination

load directly on gel after PCR

## Ordering

### Choose Product Size

1 ml | 250 rxn

5 x 1ml | 1250 rxn

20 ml | 5000 rxn

0.2 ml | 50 rxn **free sample**

REQUEST FOR BULK SIZE

Some applications of this product may require a license which is not provided by the purchase of this product.

**For research use only.**

## Description

SolisFAST® Master Mix is a 5x-concentrated, ready-to-use solution for fast singleplex and multiplex endpoint PCR assays. The mix allows amplification of up to 5 kb fragments from low complexity DNA templates (e.g. lambda, plasmid DNA), and up to 3 kb from complex DNA templates (e.g. human genomic DNA).

Combining our novel *in-silico* designed SolisFAST® DNA Polymerase and optimized buffer, this mix offers robust PCR, accurate target detection, ice-free shipping and reaction set-

For extra convenience the mix includes dUTP and UNG enzyme that enable UNG treatment to prevent carryover contamination.

The mix can be loaded directly to gel for post PCR analysis.

## Mix Properties

**Concentration:** 5x

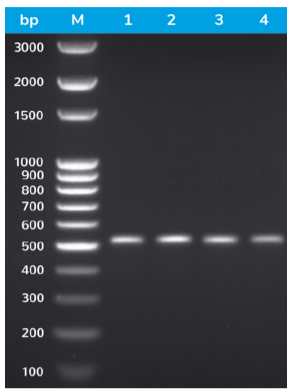
**Hot-start:** yes, 2 minutes initial incubation at 98 °C

**Ready-to-load:** yes, includes two loading dyes

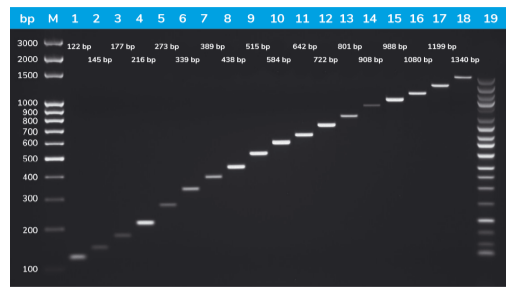
**Cloning Type:** T/A cloning

**Amplicon Size:** up to 5 kb

**Targets:** 1-18 targets, depending on amplicon length



PCR results in 20 minutes



Excellent singleplex and multiplex PCR results!

## Mix Components:

**SolisFAST<sup>®</sup> DNA Polymerase:** *In silico* designed analogue of Taq DNA polymerase with enhanced stability at room temperature, fast hot-start and faster extension rates compared to the wild-type Taq DNA polymerase.

**PCR buffer:** Includes 17.5 mM MgCl<sub>2</sub> (1x PCR solution 3.5 mM MgCl<sub>2</sub>), dNTPs (dATP, dCTP, dGTP, dUTP), UNG, additives that maximize efficiency of PCR

**Green loading dye<sup>1</sup>:** Mix of blue and yellow dye to allow tracking of DNA during electrophoresis.

<sup>1</sup>The mix is not recommended for use in applications where spectrophotometric measurements are necessary (e.g. Sanger sequencing). Migration speed: blue dye – TBE: ~3.5 kb, TAE: ~4.5 kb; yellow dye – TBE: ~35 bp, TAE: ~45 bp).

**India Contact:**  
**Life Technologies (India) Pvt. Ltd.**  
 306, Aggarwal City Mall, Opposite M2K Pitampura,  
 Delhi – 110034 (INDIA). Ph: +91-11-42208000, 42208111, 42208222  
 Mobile: +91-9810521400  
 Fax: +91-11-42208444  
 Email: [customerservice@lifetechindia.com](mailto:customerservice@lifetechindia.com)  
 Web: [www.lifetechindia.com](http://www.lifetechindia.com)