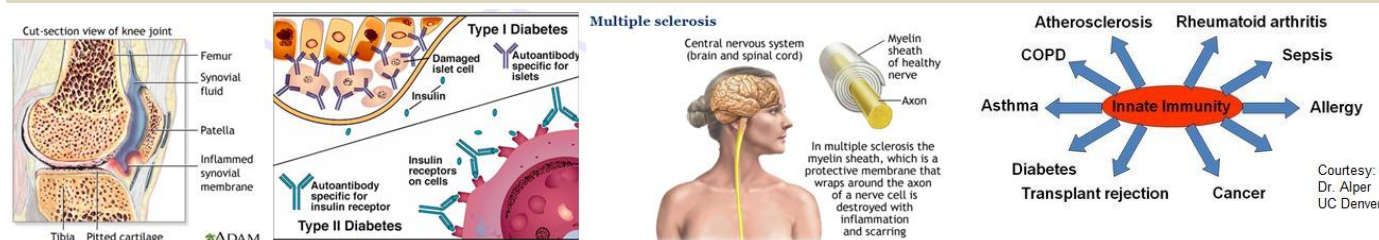


## Autoantibody ELISA Kits

Autoimmune ELISA Kits (Mouse, Rat, Human, etc)

An **autoantibody** is an antibody produced by the immune system that is directed against one or more of the individual's own proteins. Production of autoantibodies is not normal and often results into autoimmune disease such lupus. The causes of autoantibody production are varied and not well understood. It is thought that some autoantibody production is due to a genetic predisposition combined with an environmental trigger, such as a viral illness or a prolonged exposure to certain toxic chemicals. **Autoimmune diseases** arise from an inappropriate immune response of the body against substances and tissues normally present in the body. In other words, the immune system mistakes some part of the body as a pathogen and attacks its own cells. This may be restricted to certain organs (e.g. in autoimmune thyroiditis) or involve a particular tissue in different places (e.g. Goodpasture's disease which may affect the basement membrane in both the lung and the kidney). The treatment of autoimmune diseases is typically with immunosuppression—medication which decreases the immune response. It is estimated that 5% of US population.



The type of autoimmune disorder or disease that occurs and the amount of destruction done to the body depends on which systems or organs are targeted by the autoantibodies, and how strongly. Disorders caused by organ specific autoantibodies, those that primarily target a single organ, such as the thyroid in **Graves' disease** and **Hashimoto's thyroiditis**, are often the easiest to diagnose as they frequently present with organ related symptoms. Disorders due to systemic autoantibodies can be much more elusive. Autoantibodies are typically detected by serology (ELISA). A patient may have antibodies to several antigens. There are many autoimmune diseases animal model available for research. 9 out of 18 human clusters of autoimmune susceptible genes share highly-conserved genetic regions with animal models. Animal models are used for the study of a number of human autoimmune diseases, including **multiple sclerosis, diabetes, rheumatoid arthritis and systemic lupus erythematosus**. Induced, spontaneous and genetically manipulated animal models can be described in terms of their parallels to human disease and as tools for the development of potential therapies. **ADI has made many ELISA kits to detect and measure various autoantibodies in mouse, rat, monkey, and humans.**

### List of some major autoantibodies and association with autoimmune diseases

Antinuclear antibodies (ANA)	Anti-SSA/Ro autoantibodies	systemic lupus erythematosus, neonatal heart block, primary Sjögren's syndrome
	Anti-La/SS-Bautoantibodies	Primary Sjögren's syndrome
	Anti-centromere antibodies	CREST syndrome
	Anti-neuronal nuclear antibody-2	opsoclonus
	Anti-dsDNA	SLE
	Anti-Jo1	inflammatory myopathy
	Anti-RNP	Mixed Connective Tissue Disease
	Anti-Smith	SLE
	Anti-topoisomerase antibodies	systemic sclerosis (anti-Scl-70 antibodies)
	Anti-histone antibodies	SLE and Drug-induced LE
Anti-transglutaminase antibodies		coeliac disease (Anti-tTG)
		dermatitis herpetiformis (Anti-eTG)
		acute motor axonal neuropathy (AMAN) GD3
Anti-actin antibodies		coeliac disease anti-actin antibodies correlated with the level of intestinal damage
anti-CCP (cyclic citrullinated protein)		rheumatoid arthritis
Lupus anticoagulant		systemic lupus erythematosus (thrombin)
		antiphospholipid syndrome (phospholipid)
Anti-neutrophil cytoplasmic antibody (cANCA/pANCA)		Wegener's granulomatosis
		microscopic polyangiitis, Churg-Strauss syndrome, systemic vasculitides (non-specific)
Rheumatoid factor		Rheumatoid arthritis
Anti-smooth muscle antibody		chronic autoimmune hepatitis
Anti-mitochondrial antibody		primary biliary cirrhosis
thyroid peroxidase(microsomal)		Hashimoto's thyroiditis
TSH receptor		Graves' disease
glutamic acid decarboxylase (GAD)/Insulin		diabetes mellitus type 1, stiff person syndrome, Multiple sclerosis
Anti-MBP, Anti-Gad65/67, Anti-insulin		

## Autoimmune ELISA Kits (Mouse, Rat, Human etc)

Autoimmune ELISA Kits (Mouse, Rat, Human, etc)

Autoantigens	Antibody isotype ELISA kit Cat #					
	Species	Total Ig's#	IgG-Specific	IgM- Specific	IgA- Specific	Other Isotypes
<b>Rheumatology</b>						
Anti- <b>ssDNA</b> (single stranded DNA)	Mouse	5310	5320	5330		
	Rat		650-330-DSN			
	Human		3115			
	Monkey		650-330-DSN			
Anti- <b>dsDNA</b> (double stranded DNA)	Mouse	5110	5120	5130	5120-A (IgA)	5120-1 (IgG1) 5120-2a (IgG2a) 5120-2b (IgG2b) 5120-3 (IgG3) 5120-E (IgE)
	Rat		650-130-DDN			
	Human		3100	3105	3110	
	Monkey	670-100-DNM				
Anti-Nuclear Antibodies ( <b>ANA</b> or <b>ENA</b> )	Mouse	5210				
	Rat		650-230-ANA			
	Human		3205			
	Monkey	670-110-ANM				
Anti- <b>SSA/Ro</b> (Sjogren Syndrome A)	Mouse	5710				
	Human		3210-SSA			
Anti- <b>SSB/La</b> (Sjogren Syndrome B)	Mouse	5810				
	Human		3220-SSB			
Anti-Sm (Smith antigen)	Mouse	5405				
	Human		3300-100-SMG			
Anti- <b>RNP</b> (ribonucleoprotein)	Mouse	5410				
	Human		3300-120-RNG			
Anti-Sm/RNP	Human		3300-110-SRG			
<b>RF</b> (Rheumatoid Factors)	Mouse	6200	3700-MIG	3710-MIM		
	Human		3000-110-RFG	3000-100-RFM	3000-105-RFA	
	Rat		3750-RIM	3760-RIM		
Anti-Complement <b>C1q</b> (anti-C1q)	Mouse	5020				
Circulating immune complexes (CIC)	Mouse	5900	2950			
Anti- Cyclic Citrullinated Peptide ( <b>CCP</b> )	Mouse		680-400-CCG	680-410-CCM		
	Rat		680-420-CCG	680-430-CCM		
	Human		3300-340-CCG			
Anti- <b>Histones</b>	Mouse	5610				
	Rat		650-430-HIS			
	Human		3300-130-HNG			
	Monkey	670-120-HIM				
Anti- <b>Scl70</b> (Scleroderma 70 Kda)	Mouse	6110				
	Rat		650-430-HIS			
	Human		3300-140-SCG			
Anti- <b>Jo-1</b>	Mouse	6005				
	Human		3300-150-JOG			

## Autoimmune ELISA Kits (Mouse, Rat, Human etc)

Autoimmune ELISA Kits (Mouse, Rat, Human, etc)

Autoantigens	Antibody isotype ELISA kit cat#					
	Species	Total Ig's #	IgG-Specific	IgM- Specific	IgA- Specific	Other Isotypes
<b>Rheumatology</b>						
Anti-Proliferating Cell Nuclear Antigen ( <b>PCNA</b> )	Mouse	5010				
Anti-Fodrin	Human		3300-160-AFG			
<b>Thrombosis-Diagnostics</b>						
Anti-Cardiolipin	Mouse	5510				
	Rat	5520				
	Human		3300-170-CLG	3300-175-CLM	3300-185-CLA	
Anti-Beta 2 Glycoprotein ( <b>B2GP</b> )	Mouse	5000				
	Human		3300-190-B2G	3300-195-B2M	3300-200-B2A	
Anti-Phospholipid Screen	Human	3300-200-APS (measure of IgG/IgM isotypes) (Anti-cardiolipin, phosphotidyl serine, phohphotidyl inositol, phosphatidic acid, and Beta-2GP)				
Anti-Phosphotidyl Serine	Human		3300-210-PSS (IgG/IgM)			
Anti-Phosphotidyl Inositol	Human		3300-215-PIS (IgG/IgM)			
Anti-Phosphotidic Acid	Human		3300-220-PAS (IgG/IgM)			
Anti-Phosphocholine (PC)	Mouse		680-100-PCG	680-110-PCM		
	Rat		680-200-PCG	680-210-PCM		
	Human		680-300-PCG	680-310-PCM		
Anti-Prothrombin	Human		3300-230-APG (IgG/IgM)		3300-235-APA	
Anti-Annexin V	Human		3300-220-PAS			
<b>ANCA Diagnostics</b>						
Anti-Neutrophil Cytoplasmic Antibody ( <b>ANCA</b> ) Screen (Anti-PR3 and Anti-MPO)	Human		3300-250-ANG			
ANCA (Anti-PR3)	Human		3300-255-PRG			
ANCA (Anti-MPO)	Human		3300-265-MPG			
Anti- glomerular basement membrane ( <b>GBM</b> )	Human		3300-270-GBG			
Anti- bactericidal permeability increasing ( <b>BPI</b> )	Human		3300-280-BPG			
Anti-Elastase	Human		3300-290-ELG			
<b>Gastroenterology</b>						
Anti-Gliadin	Human		3300-300-GLG	3300-305-GLM	3300-310-GLA	
Anti-Parietal Cell	Human		3300-315-PRG			
ASCA (anti- <i>S. cerevisiae</i> Antibodies or anti-mannan)	Mouse		680-500-ASG	680-505-ASM	680-510-ASA	
	Rat		680-520-ASG	680-525-ASM	680-530-ASA	
	Human		3300-320-ASC (IgG/IgA)			
Anti- <i>E. coli</i> Antibodies	Mouse	500-100-ECP				
	Rabbit	500-120-ECP				
	Human		500-110-ECP	500-115-ECP		
<b>Fertility</b>						
Anti-Sperm	Human		3300-330-ASG			
<b>Thyroid</b>						
Anti-Thyroid peroxidase ( <b>TPO</b> )	Human		3300-350-TPG			
Anti-TG (thyroglobulin)	Human		3300-360-TGG			

## Autoimmune ELISA Kits (Mouse, Rat, Human etc)

Autoimmune ELISA Kits (Mouse, Rat, Human, etc)

Autoantigens	Antibody isotype ELISA kit cat#					
	Species	Total Ig's #	IgG-Specific	IgM- Specific	IgA- Specific	Other Isotypes
<b>Diabetes</b>						
Anti-Insulin	Mouse		3700-MIG	3710-MIM		
	Rat		3750-RIM	3760-RIM		
	Human		3600-HIG			
	Monkey		3610-MKG			
Anti-Glutamic Acid Decarboxylase (GAD65)	Mouse	660-100-G65				
	Rat	660-080-G65				
	Human	660-090-G65				
Anti- Glutamic Acid Decarboxylase (GAD67)	Mouse	660-110-G67				
	Rat	660-120-G67				
	Human	660-130-G67				
<b>Multiple Sclerosis (MS)</b>						
Anti- Myelin oligo dedndrocyte (MOG 35-55) Peptide	Mouse	600-200-MOG 4000				
	Rabbit	600-210-MOG				
Anti-Myelin oligo dedndrocyte (MOG) protein	Mouse	600-230-MOG				
	Rat	600-240-MOG				
Anti-Myelin Basic Protein (MBP)	Mouse	630-100-MBP				
	Rat	630-110-MBP				
	Rabbit	630-120-MBP				
	Human		630-130-MBP	630-135-MBP		
Myelin Associated Glycoprotein (MAG)	Mouse	640-100-MAG				
<b>Allergy &amp; Immunology</b>						
Anti-Ovalbumin	Mouse	600-100-OGG	600-105-OGG	600-170-OGM	600-150-OGA	600-110-OG1 (IgG1) 600-120-O2A (IgG2a) 600-130-O2B (IgG2b) 600-140-OG3 (IgG3) 600-165-OGE (IgE)
	Rat		620-100-OGG	610-120-OGM		610-110-OGE (IgE)
	Human		670-140-OVG	670-145-OVM		670-155-OVE (IgE)
	Monkey	670-130-OVM				
	Rabbit		620-100-OGG			
Anti-Dinitrophenol (Anti-DNP)	Mouse		640-210-DGG	640-220-DGM		640-200-DGE (IgE)
	Rat		650-110-DGG	650-120-DGM		650-100-DGE
Human Anti-Mouse Antibodies (HAMA)	Human	200-205-HAM (all isotypes). This is a generic HAMA kit. ADI also has ELISA that detect HAMA-specific for humanized antibodies such as Rituximab etc				
Human Anti-Human Antibodies (HAHA)	Human	200-200-HAH (all isotypes). This is a generic HAHA kit. ADI also has ELISA that detect HAHA-specific for humanized antibodies such as Humira, Xolair, Herceptin etc				
<b>Innate Immunity</b>						
Anti-KLH (keyhole Limpet Hemocyanin)	Mouse	700-130-KLM				
	Human		700-140-KLG	700-145-KLM		
	Rabbi	700-110-KLR				
	Monkey		700-170-KLG	700-180-KLM		
	Canine		700-195-KLG	700-190-KLM		

Rev. 121212A

**India Contact:**

**Life Technologies (India) Pvt. Ltd.**

306, Aggarwal City Mall, Opposite M2K Pitampura, Delhi – 110034 (INDIA). Ph: +91-11-42208000, 42208111, 42208222, Mobile: +91-9810521400, Fax: +91-11-42208444  
Email: [customerservice@lifetechindia.com](mailto:customerservice@lifetechindia.com) Website: [www.lifetechindia.com](http://www.lifetechindia.com)