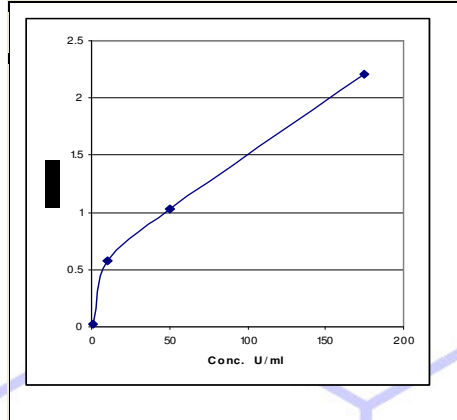


## Mouse Anti-Influenza B Ig's ELISA Kit, Cat# 920-500-MBG

Mouse Anti-Influenza B Ig's ELISA kit | Quantitative | Standards 0 - 175 U/ml | Sample=100 ul (diluted); 105 min assay



### Mouse Anti-Influenza B Ig's ELISA Kit Features

- Influenza B antigen (Common vaccine, strain Harbi) pre-coated, stabilized, ready-to-use 96-well strip plate, suitable for multiple runs over 6-12 months.
- Convenient, stable, liquid calibrators: A (-ve control @ 1 u/ml); B (cut-off control @ 10 u/ml); C (weak positive at 50 u/ml) and D (positive control @ 175 u/ml) containing anti-Influenza B Ig's
- 100ul samples diluted 1:101 or more;
- 105 min room temp assay, 3 incubation steps,;
- Contains all necessary reagents. Stability ~12 months

**This kit is for measuring anti-Influenza B Ig's in mouse serum or plasma samples.** For in vitro research use only.

**Assay Procedure:** Allow all reagents to reach room temperature. Arrange and label required number of strips.

- Step 1.** Pipet **100 ul each** of pre-diluted standards, samples (diluted 1:101 or more). Mix gently and incubate at room temp for **60 min.**
- Step 2.** **Aspirate and wash 3X.** Add **100 ul of antibody-HRP Conjugate** to all wells, mix gently and incubate at room temp for **30 min.**
- Step 3.** **Aspirate and wash 4X.** Add **100 ul of TMB Substrate** solution to all wells, mix gently, and incubate at room temp for **15 min.**
- Step 4.** Pipet **100 ul of stop solution** into each well and mix gently (blue color turns yellow). **Measure absorbance at 450 nm.** Determine antibody concn in each sample using the standards (results are expressed in units/ml).

### Performance Characteristics

**Negative:** <8 U/ml      **Equivalocal:** 8-12 U/ml; **Positive:** >12 U/ml

### General Information

There are two main types of influenza (flu) virus: Types A and B. Influenza A and B viruses that routinely spread in people (human influenza viruses) are responsible for seasonal flu epidemics each year. The emergence of a new influenza virus causing illness in people can result in an influenza pandemic, as occurred in the spring of 2009 when a new influenza A (H1N1) virus emerged to cause illness in people and spread worldwide.

Influenzavirus B is a genus in the virus family Orthomyxoviridae. The only species in this genus is called "Influenza B virus". Influenza B viruses are only known to infect humans and seals, giving them influenza. This limited host range is apparently responsible for the lack of Influenzavirus B caused influenza pandemics in contrast with those caused by the morphologically similar Influenzavirus A as both mutate by both genetic drift and reassortment.

Further diminishing the impact of this virus "in man, influenza B viruses evolve slower than A viruses and faster than C viruses". Influenzavirus B mutates at a rate 2 to 3 times lower than type A. However, influenza B mutates enough that lasting immunity is not possible. For example at the U.S.'s Food and Drug Administration's (FDA) 101st meeting of February 16, 2005, an extensive discussion and vote was held concerning next year's flu vaccine virus selection including which influenza B strain to use in the formulation of the flu vaccine:

"For Influenza B, there new strains present, and in 2004, the majority of the viruses were similar to a strain called B/Shanghai/361/2002, which is from the so-called B/Yamagata/1688 hemagglutinin lineage.

There are several Influenza B vaccines available that can be used alone or in combination with other diseases (multivalent). It is often necessary to monitor the efficacy of vaccines and determine the anti-Influenza B Ig levels in patients or for clinical trial using new formulation of vaccines. ADI's mouse Anti- Influenza B Ig's ELISA kit is an immunoassay for the quantitative determination of Ig's (G+A+M) class antibodies against Influenza B Comvax (HepB/Hib), PedvaxHib (Hib-PRP-OMP) –Merck; Trihibit (DTAP/Hib), ActHib (Hib-PRP-T) - Sanofi Pasteur; HibTiter (Hib-Hboc) – WyethLederle.

### Related ELISA kits

920-400-HBG	Human anti-Influenza B Ig's ELISA Kit	920-600-RBG	Rabbit anti-Influenza B Ig's ELISA Kit
920-605-RBG	Rabbit anti-Influenza B IgG ELISA Kit	920-610-RBM	Rabbit anti-Influenza B IgM ELISA Kit
940-100-DHG	Human Anti-Diphtheria IgG ELISA Kit;	940-110-DHM	Human Anti-Diphtheria IgM ELISA kit

Anti-Tetanus Toxoid, anti-B. Pertussis IgG, IgM (Human and Mouse) ELISA kits also available.

Rev. 100803JA

### India Contact:

#### Life Technologies (India) Pvt. Ltd.

306, Aggarwal City Mall, Opposite M2K Pitampura, Delhi – 110034 (INDIA). Ph: +91-11-42208000, 42208111, 42208222, Mobile: +91-9810521400, Fax: +91-11-42208444  
Email: [customerservice@lifetechindia.com](mailto:customerservice@lifetechindia.com) Website: [www.lifetechindia.com](http://www.lifetechindia.com)