



Viale Piceno 137/f
61032 Fano PU (IT)
Telephone + 39 (0) 721830605
FAX +39 (0) 721837154
e-mail: info@diatheva.com
www.diatheva.com

India Contact:**Life Technologies (India) Pvt. Ltd.**

306, Aggarwal City Mall, Opposite M2K Pitampura,
Delhi – 110034 (INDIA).

Ph: +91-11-42208000, 42208111, 42208222

Mobile: +91-9810521400

Fax: +91-11-42208444

Email: customerservice@lifetechindia.com

Web: www.lifetechindia.com

Rabbit Anti Human Prelamin A

ANT0045
200µl

Description

Several laminopathies are characterized by anomalous accumulation of prelamin A. This polyclonal antibody is able to detect full-length prelamin A, while it does not recognize either mature lamin A or cleaved prelamin A intermediates.

Product type

Polyclonal antibody

Immunogen

Prelamin A C-terminus peptide

Source

Rabbit

Reacts with

Full-length prelamin A protein

Specificity

Anti prelamin A polyclonal antibody detects full-length prelamin A which has not yet undergone to proteolytic steps, both in its non-farnesylated and in its farnesylated form. The farnesylated form of full-length prelamin A is labelled by antibody with lower efficiency. The antibody does not cross react with mature lamin A.

Tested applications

WB, ELISA, Immunofluorescence

Recommended dilutions

Recommended starting dilutions can vary lot-to-lot.
Consult the product information label in the package for lot specific values.

Note: When using any primary antibody or fluorescence-labelled secondary antibody for the first time, titrate out the antibody to determine which dilution allows the strongest specific signal with the lowest background for your sample.

For untested applications or species please refer to the [S.M.A.K.](#) program.

Purity

Polyclonal immunoglobulins purified by protein A affinity chromatography and stabilized with 5% of glycerol.

Form

Liquid. Supplied in 100mM sodium citrate, 50mM Tris and 0.05% v/v glycerol. Neutral pH.

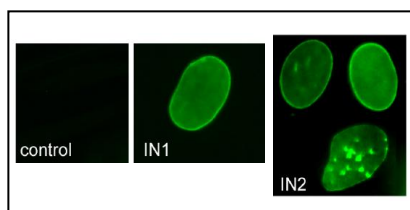
Storage instructions

Shipped at +4°C. When stored at +4°C, the antibody is stable for 18 months. For extended storage, the solution may be frozen at -20°C in working aliquots.

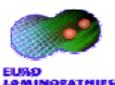
Note: Avoid repeated freezing and thawing cycles.

References

Available on library section: <http://www.diatheva.com/library.htm>



Immunofluorescence staining with anti-prelamin A antibody 1188-1 in human fibroblasts. Control: untreated cells; IN1: cells accumulating full-length farnesylated prelamin A by inhibitor treatment; IN2: cells accumulating non-farnesylated prelamin A by inhibitor treatment.



EURO
LAMINOPATHIES
www.projects.mfpl.ac.at/euro-laminopathies



supported by European Union's FP6
Life Science, Genomics and Biotechnology for Health
LSHM-CT-2005-018690

**Anti prelamin A polyclonal antibody
APPLICATION PROTOCOLS**

Western blotting:

- Saturate the membrane with 4% BSA in TBS
- Apply 1188-1 antibody at 1:100 - 1:500 dilution for 1 hour at room temperature
- Wash two time with TBS + 4% BSA + tween 0.05%
- Apply secondary antibody for 1 hour at Room temperature

Immunofluorescence:

- Fix the cells in methanol at -20°C for seven minutes
- Incubate with primary antibody diluted 1:50 - 1:500 overnight at 4°C in PBS containing 4% BSA
- Apply secondary antibody for 1 hour at room temperature