



Viale Piceno 137/f  
61032 Fano PU (IT)  
Telephone + 39 (0) 721830605  
FAX +39 (0) 721837154  
e-mail: info@diatheva.com  
www.diatheva.com

**India Contact:****Life Technologies (India) Pvt. Ltd.**

306, Aggarwal City Mall, Opposite M2K Pitampura,  
Delhi – 110034 (INDIA).  
Ph: +91-11-42208000, 42208111, 42208222  
Mobile: +91-9810521400  
Fax: +91-11-42208444  
Email: [customerservice@lifetechindia.com](mailto:customerservice@lifetechindia.com)  
Web: [www.lifetechindia.com](http://www.lifetechindia.com)

## Rabbit Anti Human Cleaved Farnesylated Prelamin A

### ANT0046

200µl

#### Description

The antibody is able to detect cleaved farnesylated prelamin A, while it does not recognize either full-length prelamin A or mature lamin A. This antibody can be used for the discrimination of prelamin A forms and to check the efficacy of potential therapeutic compounds acting on prelamin A processing.

#### Product type

Polyclonal antibody

#### Immunogen

Farnesylated prelamin A C-terminus peptide

#### Source

Rabbit

#### Reacts with

Carboxymethylated prelamin A harbouring the farnesyl residue

#### Specificity

Anti cleaved farnesylated prelamin A polyclonal antibody detects carboxymethylated prelamin A harbouring the farnesyl residue. This antibody also recognizes progerin, the truncated form of prelamin A found in Hutchinson-Gilford Progeria Syndrome cells, and does not cross react with mature lamin A.

#### Tested applications

Immunofluorescence (methanol fixing is suggested)

#### Recommended dilutions

Recommended starting dilutions can vary lot-to-lot.  
Consult the product information label in the package for lot specific values.

**Note:** When using any primary antibody or fluorescence-labelled secondary antibody for the first time, titrate out the antibody to determine which dilution allows the strongest specific signal with the lowest background for your sample.

*For untested applications or species please refer to the [S.M.A.K.](#) program.*

#### Purity

Polyclonal immunoglobulins purified by protein A affinity chromatography and stabilized with 5% of glycerol.

#### Form

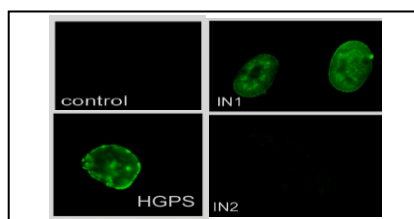
Liquid. Supplied in 100mM sodium citrate, 50mM Tris and 0.05% v/v glycerol. Neutral pH.

#### Storage

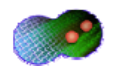
Shipped at +4°C. When stored at +4°C, the antibody is stable for 18 months.  
Do not freeze.

#### References

Available on library section: <http://www.diatheva.com/library.htm>



Immunofluorescence staining with anti-cleaved farnesylated prelamin A antibody 1188-2 in human fibroblasts. Control: untreated cells; IN1: cells accumulating farnesylated prelamin A by inhibitor treatment; IN2: cells accumulating non-farnesylated prelamin A by inhibitor treatment; HGPS: Hutchinson-Gilford Progeria Syndrome cells.



www.projects.mfpl.ac.at/euro-laminopathies



supported by European Union's FP6  
Life Science, Genomics and Biotechnology for Health  
LSHM-CT-2005-018690

**Anti-cleaved farnesylated prelam A polyclonal antibody**  
**APPLICATIONS PROTOCOLS**

**Immunofluorescence:**

- Fix the cells in methanol at -20°C for seven minutes (methanol fixing is required for 1188-2 antibody)
- Incubate with primary antibody diluted 1:10-1:200 overnight at 4°C in PBS containing 4% BSA
- Apply secondary antibody for 1 hour at room temperature