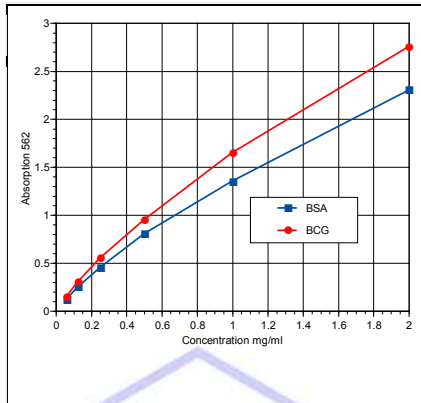


BCA Optima Micor Protein Assay Kit with Pre-Diluted Standards



Enhanced Micro BCA Protein Assay-Highlights

- Convenient, stable, ready to use liquid, error free BSA or BGG standards (2000, 1000, 500, 250, 125, 62.5, 31.25, 0.0 ug/ml). No dilution of standards saves time and prevent errors.
- Range ~31-2000 ug/ml; 10-20 ul samples
- 60 minute incubation at 37oC (room temp possible). Read A562nm (540-590nm); time can be adjusted from 30-2 hrs at 37oC or Room temp.
- Sufficient reagents for ~500 tests. Supplied with optimized BCA-Strip plates for ~500 tests

For in vitro research use only.

Kit Contents

1. Enhanced BCA Protein Reagent A: 100 ml
2. Enhanced BCA Protein Reagent B: 2 ml
3. Standards: **BSA** @ at 2 mg/ml or **BGG** Prediluted standards, (2000, 1000, 500, 250, 125, 62.5, 31.25, 0.0 ug/ml)
4. Pre-optimized strip plates for all BCA tests assure 100% compatibility. Save time and hassle to buy separate items.

Reagent Preparation

Enhanced BCA Protein assay requires 200 ul of working reagent per well (Mix reagent A and B in 50:1 ratio or 1000 ul of Solution A and 20 ul of Solution B). Do not keep mixture of A+B and prepare only in the required amounts. Prepare just before the assay and make sure to have all reagents at room temp. Prepare 2 ml of working reagent/8 well strip.

Assay Procedure: Allow all reagents to reach room temperature. Arrange and label required number of strips.

Prepare the BCA working reagents by mixing Reagents A and B (50:1 or 1960 ul of reagent A and 40 ul of reagent B for each 8-wells strips). Prepare or Dilute samples if necessary.

Step 1. Pipet **20 ul of pre-diluted standards and protein samples** in duplicate into a fresh ELISA strips (Supplied). **Dispense 200 ul of BCA working reagent** into all wells. Mix gently, cover the plate and incubate at 37oC for 30-60 min or room temp 25-28oC (2 hrs).

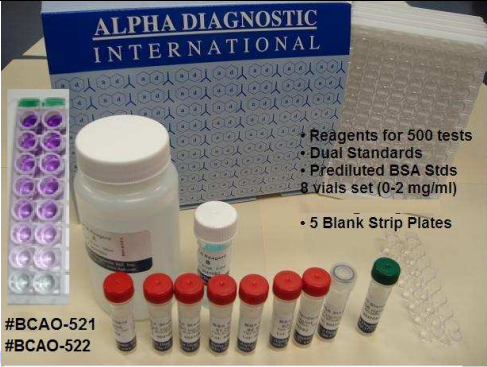
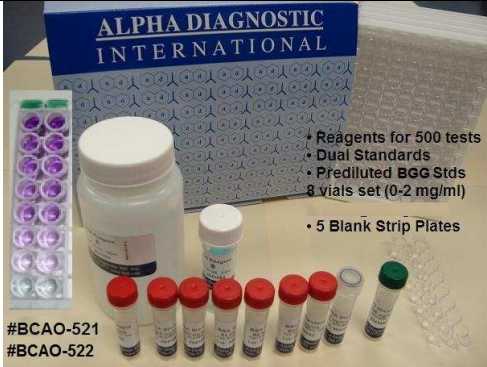




Step 2. **Measure Absorbance at A562 nm using an ELISA reader** (or use 540-590nm filter). Calculate concentration of protein from the standard curve. .

General Information

BCA (bicinchoninic acid) Protein Assay is one of the most popular protein assay. It is compatible with many detergents and therefore it provides an accurate determination of protein concentration in most sample types. Compared to most dye-binding methods, the BCA Assay is affected much less by protein compositional differences, providing greater protein-to-protein uniformity. BCA Assay can be used to assess yields in whole cell lysates and affinity-column fractions, as well as to monitor protein contamination in industrial applications.

Advantages of ADI's Enhanced BCA Protein Assay.

| Features | ADI Kit | Competitor |
|--|---------|---------------------|
| Enhanced Sensitivity (31-2000 ug/ml) | Yes | No |
| Ready to use Standards (Pre-diluted, Pre-coated etc) | Yes | No (supply 1 stock) |
| Compatibility with common buffers and detergents (Am. Sulphate=25mM; Glycine, pH, 2.8=100 mM; Imidazole, pH 7.0=50mM; MOPS=100mM; RIPA buffer; NaCl=1 M; Tris=250mM; NP-40=5%; SDS=5%; TritonX-100=5%; Tween-20=5%; DTT=1mM; DMF=10%; Sucrose=40%; Urea=3M; Glycerol=10%; DMSO=10%; & Many other reagents | Yes | Yes/No |

| BCA Optima Protein Assay #BCAO-521 is supplied with Pre-Diluted BSA Standards | BCA Optima Protein Assay #BCAO-522 is supplied with Pre-Diluted BGG Standards |
|--|---|
|  <p>• Reagents for 500 tests • Dual Standards • Prediluted BSA Stds 8 vials set (0-2 mg/ml) • 5 Blank Strip Plates</p> <p>#BCAO-521 #BCAO-522</p> <p>BCA "Optima" Protein Assay Kits (shown with Pre-diluted Standards, BCA Reagents for ~500 tests, and BCA ELISA Strip Plates (5)</p> |  <p>• Reagents for 500 tests • Dual Standards • Prediluted BGG Stds 8 vials set (0-2 mg/ml) • 5 Blank Strip Plates</p> <p>#BCAO-521 #BCAO-522</p> <p>BCA "Optima" Protein Assay Kits (shown with Pre-diluted Standards, BCA Reagents for ~500 tests, and BCA ELISA Strip Plates (5)</p> |
| <p>#BCA-BSA-1 • Prediluted BSA Stds 8 vials set (0-2 mg/ml)</p>  <p>Bovine Serum Albumin (BSA) standard set for BCA "Optima" Protein assay kit (Pre-diluted BSA Std set, 8 vials 0.2 mg/ml, 1 ml each), Cat# BCA-BSA-1</p> | <p>#BCA-BGG-1 • Prediluted BGG Stds 8 vials set (0-2 mg/ml)</p>  <p>Bovine Gamma Glob. (BGG) standard set for BCA "Optima" Protein assay kit (Pre-diluted BGG Std set, 8 vials 0.2 mg/ml, 1 ml each), Cat#</p> |
| <p>#BSA-BGG-1 • BSA Std @ 2/ml • BGG Std @ 2/ml</p>  <p>Bovine Serum Albumin (BSA) and Bovine Gamma Globulin (BGG) set, 1 vial each, 1 ml (2 mg/ml); For BCA Protein Assay kits; Ca# BCA-BGG-1</p> | <p>#BCAP-5 Pre-optimized blank strip plates for BCAP Protein Assay Kits 5 Plates or 480 wells</p>  <p>Preoptimized blank ELISA strip plates (96 wells; 8 wells/strip) 5 plates/pk Preoptimized for BCA protein assays kits # BCAP-5</p> |

Ordering Information

| Catalog# | ProdDescription | SIZE |
|-----------|---|-------|
| BCAP-5 | BCA Protein Assay Ready to use blank pre-optimized strip plates (5) or BCA Optima Protein Assay | 1 pk |
| BCAO-521 | BCA Optima Protein Assay kit with Pre-diluted BSA standards and BCA Strip plates (5), 500 tests | 1 kit |
| BCAO-522 | BCA Optima Protein Assay kit with Pre-diluted BGG (bovine gamma globulin) standards and BCA Strip plates (5), 500 tests | 1 kit |
| BCA-BSA-1 | Pre-diluted BSA (bovine serum albumin) standards (1 set) for BCA Optima Protein Assay kit | 1 pk |
| BCA-BGG-1 | Pre-diluted BGG (bovine gamma globulin) standards (1 set) for BCA Optima Protein Assay kit | 1 pk |
| BSA-BGG-1 | BSA and BGG Stock standards (1 vial each @ 2 mg/ml) for BCA Optima Protein Assay kit | 1 pk |

BCAO-521-BCA-Optima-Protein-Assay-kit-Manual 151130A

India Contact:

Life Technologies (India) Pvt. Ltd.

306, Aggarwal City Mall, Opposite M2K Pitampura, Delhi - 110034 (INDIA). Ph: +91-11-42208000, 42208111, 42208222, Mobile: +91-9810521400, Fax: +91-11-42208444
Email: customerservice@lifetechindia.com Website: www.lifetechindia.com