

Product Data Sheet

**Biometric, pre-stained protein Ladder (Wide range, Tri-color)**

**Cat#** BPL11-500      Biometric pre-stained proteins ladder, Tri-color (5-245 kda) for Western (SDS-PAGE)  
**Size:** 50 applications      **Form:** Liquid      **Storage:** Store at -20oC

**Highlights**

- Ready to use, No boiling
- Two reference bands **Green (25 Kda)** and **red (70 kda)**
- All other markers are **blue** and in easy multiples recombinant proteins.
- Supplied in “No Freeze buffer”.

**Description**

Multicolored protein markers consists of dye-labeled purified recombinant proteins in the range of 5-245 kda. The proteins are labeled with 3 different color dyes (blue, orange and green) for easy identification of protein markers during electrophoresis and after transfer on blotting membrane. These markers proteins should be used as regular samples for SDS-PAGE (denaturing) and Western. The markers are packaged in 50 application (10 ul/lane; 500 ul) in a “no freeze buffer”. We recommend to store stock markers at -20oC. Thirteen (13) recombinant protein in easy multiples (5, 10, 15, 25, 35, 50, 65, 75, 100, 135, 180, and 245 kda). Two reference markers (25 kDa, green) and middle range (75 kda, red) are added for easy identification of markers). All other markers are in blue color. Alternatively, markers can be dispensed in 10 ul vials and kept at -20oC and used as needed.

**Note:** Marker #11, indicated as 15 Kda on 4-20% gels, may be run as 16-18 kda on some buffer system. Marker #7, indicated as 50 kda, may run a 47-48 kda. As a general rule, pre-stained markers must not be used to calculate the “true molecular weight” of unknown proteins. We recommend using unstained markers for this purpose.

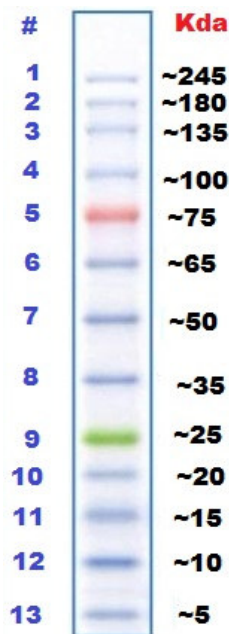
**Recommended Storage and Usage**

The markers are ready for use. No need to add sample buffer or heat. Simply remove the vial from -20oC, briefly mix it for 5-10 seconds, and load 10 ul/lane on standard minigels (1 mm thickness, 10-20 lanes/gel) for western transfer.

Some markers may not be clearly visible during electrophoresis but should be clearly visible upon transfer to blotting membranes. It is possible to use 5-7.5 ul/lane if gel size is different or buffer/gel composition is different.

Cat # BPL11-500 is supplied in a reducing sample buffer (20 mM Tris, pH 7.5, 2% SDS, 10 mM DTT, 3.6 M Urea, and 15% Glycerol).

**Stability:** 3 months at 4oC and 1 year at -20oC. Markers may freeze if stored at <-20oC. Do not store in freezing state and avoid freeze and thaw.



Tris-Glycine 4-20%

BPL11-500 analyzed on SDS-PAGE (reducing, 4-20% Tris-Glycine mini gels). This pattern will differ if analyzed on a single % gel or gels with different buffer or other variables. You can establish the standards range for a given gel system and use as reference.

*This product is for in vitro research use only.*

**Related items available from ADI**

90100	Western blot recycling kit (sufficient for 20-40 mini blots), 50 ml (10X)
PEN-G3	Antigen-Antibody Pen For Goat Primary antibodies
PEN-M2	Antigen-Antibody Pen For Mouse Primary antibodies
PEN-R1	Antigen-Antibody Pen For Rabbit Primary antibodies
SALL-500	StainAll dye for the visualization of proteins on membranes (transfer) 500 ml
80200-Rb	Western blot Kit for Rabbit Primary Antibodies, Chemilum. Substrate
80201-Gt	Western blot Kit for Goat Primary Antibodies, Chemilum. Substrate
80202-Mo	Western blot Kit for Mouse Primary Antibodies, Chemilum. Substrate
BPL11-500	120116A

**India Contact:**

**Life Technologies (India) Pvt. Ltd.**

306, Aggarwal City Mall, Opposite M2K Pitampura, Delhi – 110034 (INDIA). Ph: +91-11-42208000, 42208111, 42208222, Mobile: +91-9810521400, Fax: +91-11-42208444  
 Email: [customerservice@lifetechindia.com](mailto:customerservice@lifetechindia.com) Website: [www.lifetechindia.com](http://www.lifetechindia.com)