

Product Specification Sheet

Contagious caprine pleuropneumonia (CCPP) P60 Antibodies and controls

Cat # CP6011-S	Rabbit Anti-Contagious caprine pleuropneumonia (CCPP) P60 Protein antiserum	SIZE: 100 ul
Cat # CP6011-C	Recombinant (E. Coli) CCPP P60 Protein control for Western blot	SIZE: 100 ul

Contagious caprine pleuropneumonia (CCPP) is a highly fatal caprine disease in Africa, Asia, and Middle east. The United States and Canada are considered free of CCPP. It affects the respiratory tract, and is extremely contagious and frequently fatal. Disease is caused by members of the Mycoplasma genus - usually Mycoplasma capricolum subsp. capricolum but sometimes by M. mycoides subsp. capri or M. mycoides subsp. mycoides. Mortality ranges from 60 to 100%. Outbreaks have recently been reported in sheep and captive wildlife, including gazelles and small ruminants. Sheeps are known asymptomatic carriers of the disease. Infection is spread by close-contact aerosol, therefore overcrowding and confinement increases disease incidence. Definitive diagnosis is made by isolation and identification of the organism, Immunofluorescence, and polymerase chain reactions (PCR) can also be used for identification. Serological tests including complement fixation, latex agglutination, indirect hemagglutination and enzyme linked immunosorbent assays (ELISA) to detect serum antibodies to Mccp. CCPP antibodies are detected in serum and milk. The use of recombinant CCP60 antigen (CP60) provides specific antibody detection.

Source of Antigen and Antibodies

Antigen	Recombinant purified full length CCPP P60 protein (#CP6015-R-10)
Ab Host/type	Rabbit, Polyclonal, Unpurified antiserum (cat # CP6011-S) supplied in PBS/0.1% azide.
2-ab	Anti-rabbit IgG-HRP cat # 20320 (AP, biotin, FITC conjugates also available)
-ve control IgG	# 20009-1, Rabbit (non-immune) IgG, purified, suitable for ELISA, Western, IHC as -ve control

CP6011-C, CCPP P60 protein WB control

CCPP P60 protein was expressed as His tag protein in BL21 and purified (>95% with major band at ~41.6 kDa). For Western blot +ve control (**Cat # CP6011-C**) is supplied in SDS-PAGE sample buffer (reduced). Load 10 ul/lane of **CP6011-C** for good visibility with antibody Cat # **CP6011-S**. Store at -20°C in suitable size aliquots. SDS may crystallize in cold conditions. It should redissolve by warming before taking it from the stock. It should be heated once prior to loading on gels. If the product has been stored for several weeks, then it may be preferable to add 5 ul of fresh 2x sample buffer per 10 ul of the **CP6011-C** solution prior to heating and loading on gels.

Form & Storage of Antibodies/Peptide Control

Antiserum (unpurified)

- 100 ul solution lyophilized

Supplied in Buffer: 0.1% azide

Reconstitute powder in 100 ul PBS

Storage

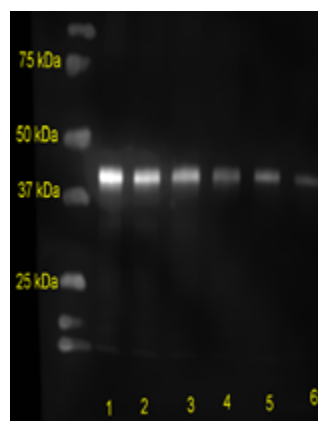
Short-term: unopened, undiluted liquid vials at -20°C and powder at 4°C or -20°C.

Long-term: at -20°C or below in suitable aliquots after reconstitution. Do not freeze and thaw and store working, diluted solutions.

Stability: 6-12 months at -20°C or below.

Shipping: 4°C for solutions and room temp for powder

Recommended Usage



Western Blotting

Ladder: rabbit antigen-antibody pen ADI# PEN-R1

Sample: CP6011-C

Primary Antibody: CP6011-S at 1:25k to 1:100k (50k in the picture @4°C overnight)

Secondary Antibody: Goat anti-rabbit igg hrp (#20320 @ 1 hr RT)

Wash Buffer: PSBT (#WB-100)

Blocking buffer: 5% BSA (#80400-100)

ECL Reagent

Lane 1 is 1 ug then its diluted 1/2 for each lane after that.

ELISA (1:1000-1:10,000 using 50-100 ng control peptide/well).

Histochemistry & Immunofluorescence:

not tested. We recommend the use of affinity purified antibody at 5-10 ug/ml in formaldehyde fixed tissue.

Specificity & Cross-reactivity

CCPP-P60 is conserved in Mycoplasma capricolum subsp. Capricolum (100%), Mycoplasma leachii (97%), Mycoplasma capricolum subsp. Capripneumoniae (94%), Mycoplasma feriruminatoris (86%), Mycoplasma mycoides (83%), Mycoplasma putrefaciens (80%), Mycoplasma yeatsii (80%). Protein or antibody cross reactivity with these viruses is not established.

General References: Arif A et al (2007) J Zoo Wildl Med. 38, 93-6.

For research use only (RUO)

Related items

CP6015-R-10	Recombinant (E. Coli)	Contagious caprine pleuropneumonia (CCPP) P60 Protein (>95%, His-tag ~45 kDa) for ELISA
RB-501310-1	RecomBac Rabbit	Anti-Contagious caprine pleuropneumonia (CCPP) IgG ELISA kit, 96 tests
RB-501320-1	RecomBac Camel	Anti-Contagious caprine pleuropneumonia (CCPP) IgG ELISA kit, 96 tests
RB-501300-1	RecomBac Goat	Anti-Contagious caprine pleuropneumonia (CCPP) IgG ELISA kit, 96 tests

CP6011-S-C

171011AC