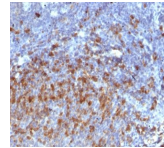


# Human IgG Immunoglobulin Monoclonal Mouse Antibody (IG266)



## Product Description

Recognizes a protein of 75 kDa, identified as  $\gamma$  heavy chain of human immunoglobulins. It does not cross-react with  $\alpha$  (IgA),  $\mu$  (IgM),  $\epsilon$  (IgE), or  $\delta$  (IgD), heavy chains, T-cells, monocytes, granulocytes, or erythrocytes. This MAb is useful in the identification of leukemias, plasmacytomas, and certain non-Hodgkin's lymphomas. The most common feature of these malignancies is the restricted expression of a single heavy chain class. Demonstration of clonality in lymphoid infiltrates indicates that the infiltrate is clonal and therefore malignant. Primary antibodies are available purified, or with a selection of fluorescent CF<sup>®</sup> dyes and other labels. CF<sup>®</sup> dyes offer exceptional brightness and photostability. See the [CF<sup>®</sup> Dye Brochure](#) for more information. Note: Conjugates of blue fluorescent dyes like CF<sup>®</sup>405S and CF<sup>®</sup>405M are not recommended for detecting low abundance targets, because blue dyes have lower fluorescence and can give higher non-specific background than other dye colors. **Stock status:** Because Biotium offers a large number of antibody and conjugation options, primary antibody conjugates may be made to order. Typical lead times are up to one week for CF<sup>®</sup> dye and biotin conjugates, and up to 2-3 weeks for fluorescent protein and enzyme conjugates. Please email [order@biotium.com](mailto:order@biotium.com) to inquire about stock status and lead times before placing your order.

## References

Note: References for this clone sold by other suppliers may be listed for expected applications.

Eur Heart Journal Case Reports (2020) 4(3): 1-5. (WB)

## Product attributes

<b>Antibody number</b>	#0266
<b>Antibody reactivity (target)</b>	Human IgG
<b>Antibody type</b>	Anti-Human Immunoglobulin, Primary
<b>Host species</b>	Mouse
<b>Clonality</b>	Monoclonal
<b>Clone</b>	IG266
<b>Isotype</b>	IgG2a, kappa
<b>Molecular weight</b>	75 kDa
<b>Synonyms</b>	G1m Marker; G2m Marker; G3m Marker; G4m Marker; HDC; Heavy Chain Disease Protein; Human Immunoglobulin G; Ig gamma1/2/3/4 Chain C Region;IGHG1; IGHG2; IGHG3; IGHG4; Immunoglobulin Heavy Constant 1/2/3/4
<b>Human gene symbol</b>	IGHG
<b>Entrez gene ID</b>	3500 (IGHG1), 3501 (IGHG2), 3502 (IGHG3), 3503 (IGHG4)
<b>SwissProt</b>	P01857, P01859, P01860, P01861
<b>Unigene</b>	510635
<b>Immunogen</b>	Purified human Ig Gamma Chain
<b>Antibody target cellular localization</b>	Secreted (extracellular)
<b>Verified antibody applications</b>	IHC (FFPE) (verified)
<b>Species reactivity</b>	Human
<b>Expected antibody applications</b>	WB (published for clone)
<b>Antibody application notes</b>	Higher concentration may be required for direct detection using primary antibody conjugates than for indirect detection with secondary antibody. Immunofluorescence: 0.5-1 ug/mL. Immunohistology formalin-fixed 0.5-1 ug/mL. Staining of formalin-fixed tissues requires boiling tissue sections in 10 mM citrate buffer, pH 6.0, for 10-20 min followed by cooling at RT for 20 minutes. Flow Cytometry 0.5-1 ug/million cells/0.1 mL. Optimal dilution for a specific application should be determined by user
<b>Positive control</b>	293T, Raji or hPBL cells. Tonsil or Spleen
<b>Shipping condition</b>	Room temperature
<b>Storage Conditions</b>	Store at 2 to 8 °C. Protect fluorescent conjugates from light. Note: store BSA-free antibodies at -10 to -35 °C
<b>Shelf life</b>	Guaranteed for at least 24 months from date of receipt when stored as recommended
<b>Regulatory status</b>	For research use only (RUO)
<b>Antibody/conjugate formulation</b>	Conjugates: 0.1 mg/mL in PBS/0.1% BSA/0.05% azide, HRP conjugates: 0.1 mg/mL in PBS/0.05% BSA, Purified: 0.2 mg/mL in PBS/0.05% BSA/0.05% azide, Purified, BSA-free: 1 mg/mL in PBS without azide
<b>Cell/tissue expression</b>	B-cells
<b>Antibody research areas</b>	Cancer, Immunology, Inflammation
<b>Tumor expression</b>	Leukemia/lymphoma



## Catalog Number Key for Primary Antibody Conjugates

Antibody # prefix	Conjugation	Ex/Em (nm)	Laser line	Detection channel	Dye Features
BNC04	CF@405S	404/431	405	DAPI (microscopy), AF405	<a href="#">CF@405S Features</a>
BNC88	CF@488A	490/515	488	GFP, FITC	<a href="#">CF@488A Features</a>
BNC68	CF@568	562/583	532, 561	RFP, TRITC	<a href="#">CF@568 Features</a>
BNC94	CF@594	593/614	561	Texas Red®	<a href="#">CF@594 Features</a>
BNC40	CF@640R	642/662	633-640	Cy@5	<a href="#">CF@640R Features</a>
BNC47	CF@647	650/665	633-640	Cy@5	<a href="#">CF@647 Features</a>
BNCB	Biotin	N/A	N/A	N/A	
BNUB	Purified	N/A	N/A	N/A	
BNUM	Purified, BSA-free	N/A	N/A	N/A	

Alexa Fluor, Pacific Blue, Pacific Orange, and Texas Red are trademarks or registered trademarks of Thermo Fisher Scientific; Cy is a registered trademark of GE Healthcare; IRDye, LI-COR, and Odyssey are registered trademarks of LI-COR Bioscience.

---

This datasheet was generated on August 31, 2022 at 12:37:11 AM. Visit product page to check for updated information before use.  
Product link: <https://biotium.com/product/monoclonal-anti-igg-immunoglobulin-ig266/>

**India Contact:**

Life Technologies (India) Pvt. Ltd.

306, Aggarwal City Mall, Opposite M2K Pitampura, Delhi - 110034 (INDIA). Ph: +91-11-42208000, 42208111, 42208222, Mobile: +91-9810521400, Fax: +91-11-42208444

Email: [customerservice@lifetechindia.com](mailto:customerservice@lifetechindia.com) Website: [www.lifetechindia.com](http://www.lifetechindia.com)