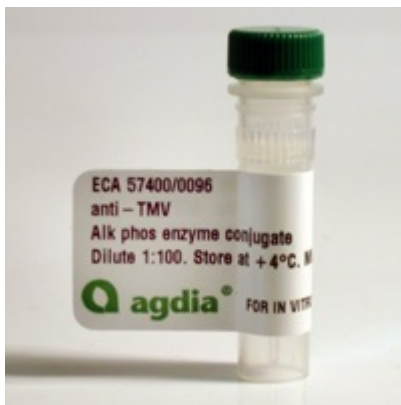


Enzyme Conjugate for *Clavibacter michiganensis* subsp. *michiganensis* (Cmm)



Test Label: Alkaline Phosphatase
Test Format: Double Antibody Sandwich (DAS) ELISA
Intended Use:

This enzyme conjugate is intended for use with its corresponding capture antibody (CAB).

Test performance using other capture antiserum has not been evaluated and is not guaranteed.

Includes:

- Alkaline phosphatase enzyme conjugate
- [User Guide](#)

Option

Enzyme conjugate for *Clavibacter michiganensis* subsp. *michiganensis* (Cmm), alkphos, 500 testwells
ECA 44000/0500

Enzyme conjugate for *Clavibacter michiganensis* subsp. *michiganensis* (Cmm), alkphos, 1000 testwells
ECA 44000/1000

Enzyme conjugate for *Clavibacter michiganensis* subsp. *michiganensis* (Cmm), alkphos, 5000 testwells
ECA 44000/5000

India Contact:

Life Technologies (India) Pvt. Ltd.

306, Aggarwal City Mall, Opposite M2K Pitampura, Delhi - 110034 (INDIA). Ph: +91-11-42208000, 42208111, 42208222, Mobile: +91-9810521400, Fax: +91-11-42208444
Email: customerservice@lifetechindia.com Website: www.lifetechindia.com