

### Form, Storage, and Recommended Usage:

Store unused blots at 4°C in a sealed bag.  
Blots are blocked with milk-based buffer (#80062). ReadyBlot should be handled with care. These blots should be used within 6 months.

It is recommended to wet the blot first in 100% methanol until the blot is wet followed by washing in PBS to remove methanol and the dye. The blot is ready to be incubated with appropriate antibodies. The standard Western protocol can be used. After the blot usage, it is recommended to keep the blot in PBS+azide if blots are to be re-used (stripped) to study with another antibody.

These blots will be most useful for proteins that are relatively abundant in whole cells. Very low abundant proteins that require the use of enriched cell membranes or nuclear fractions may be poorly represented in whole tissue blots.

An attempt has been made to equalize the protein load with beta-actin. However, antibody reactivity with beta-actin in various cells may differ due to selective posttranslational modifications or the fact that the antibody may not react with certain actin-isoforms (e.g., muscle). It is also important to realize that there is NO protein that remains the same in all physiological or pathological conditions. But beta-actin, tubulin, or glyceraldehydes-3-phosphate dehydrogenase has often been used as controls.

### Ordering Information (Human, Mouse, Rat Protein Blots)

HCWB-15	<b>Human Tumor Cells</b> (9) ReadyBlot tissue Protein Explorer
HTWB-10	<b>Adult Human Tissues</b> (11) ReadyBlot tissue Protein Explorer
MBWB-11	ReadyBlot <b>Brain</b> Protein Explorer ( <b>Adult Mice</b> )
MBWB-12	ReadyBlot <b>Brain</b> Protein Explorer ( <b>Newborn Mice</b> )
MBWB-13	ReadyBlot <b>Brain</b> Protein Explorer (~18-24 months <b>Old Mice</b> )
RBWB-11	ReadyBlot <b>Brain Protein Explorer</b> (Adult Rat)
RBWB-12	ReadyBlot <b>Brain</b> Protein Explorer ( <b>Newborn Rat</b> )
RBWB-13	ReadyBlot <b>Brain</b> Protein Explorer (~18-24 months <b>Old Rat</b> )
MDWB-41	<b>Adult Mouse Digestive Tract</b> ReadyBlot Protein Explorer
MDWB-42	<b>Newborn Mouse Digestive Tract</b> ReadyBlot Protein Explorer
RDWB-51	<b>Adult Rat Digestive Tract</b> ReadyBlot Protein Explorer
RDWB-52	<b>Newborn Rat Digestive Tract</b> ReadyBlot Protein Explorer
MTWB-71	<b>Adult Mouse Tissues</b> (10) ReadyBlot tissue Protein Explorer
MTWB-72	<b>Newborn Mouse Tissues</b> (10) ReadyBlot tissue Protein Explorer
RTWB-91	<b>Adult Rat Tissues</b> (10) ReadyBlot tissue Protein Explorer
RTWB-92	<b>Newborn Rat Tissues</b> (10) ReadyBlot tissue Protein Explorer
RKWB-81	<b>Adult Rat</b> ReadyBlot <b>Kidney</b> Protein Explorer
MKWB-61	<b>Adult Mouse</b> ReadyBlot <b>Kidney</b> Protein Explorer

### Related Products

1. Mouse monoclonal **beta-actin antibody**, cat # ACTB12-M; \$245/100 ug
2. **Western blot recycling kit** (strip antibodies in ~15 min. at room temp and re-use blots; sufficient reagents to strip 20-40 mini blots), Cat # 90100, \$195.
3. **Western blot kit** (contains all necessary blocking, wash, antibody dilute, ECL reagents and a specified (anti-rabbit, mouse etc antibody conjugates; sufficient for 15-30 blots), Cat # 80200

Instruction Manual No. HCWB-15

## Human Tumor Cells ReadyBlot Protein Explorer

Cat. #. HCWB-15

Study distribution of proteins in 9 human tumor cells



**ALPHA DIAGNOSTIC  
INTERNATIONAL**



India Contact:

**Life Technologies (India) Pvt. Ltd.**

306, Aggarwal City Mall, Opposite M2K Pitampura, Delhi – 110034  
Ph: +91-11-42208000, 42208111, 42208222

Mobile: +91-9810521400

Fax: +91-11-42208444

Email: [customerservice@atzlabs.com](mailto:customerservice@atzlabs.com)

Web: [www.atzlabs.com](http://www.atzlabs.com)

Studies on distribution of a given protein in various cells or tissues are carried out to find its probable function. In addition, the protein levels may vary according to the age or physiological or pathological conditions. There is also evidence of selective processing of mRNA (alternative splicing, posttranslational modifications (glycosylation, phosphorylation, etc) or interaction with other modifying partners. Therefore, mRNA and protein levels may not always correlate. It is important to study the actual levels of a given protein in various tissues. However, acquisition of cell lines, preparation of appropriate protein extracts, and subsequent processing of protein gels is not only time-consuming and expensive, but also requires expertise and training in tissue processing and preparation of protein samples. In order to simplify and expedite this process, total proteins from various tumor cells have been, extracted, electrophoresed, electro-blotted, and blocked. A lane of pre-stained mol. wt markers is included in each blot to assist you in identifying the size of the proteins. These blots can be part of an initial feasibility study to see if there is an interesting aspect related to a protein distribution. A more detailed, controlled study can then be initiated to elaborate initial findings.

ReadyBlot Human Cancer cells protein explorer has following cell lines:

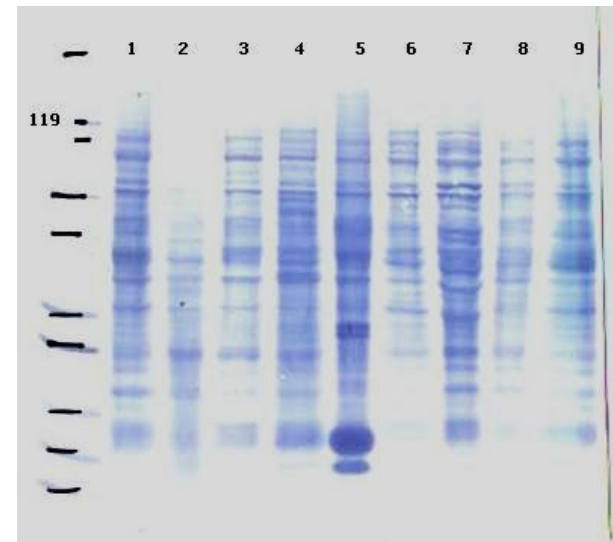
Mol. Wt markers (see details below) Lane 1: HeLa  
 Lane 2: Jurkat Lane 3: Daudi Lane 4: 293 Lane 5: Rh 30  
 Lane 6: A375 Lane 7: T98G Lane 8: HCT116 Lane 9: Hep-G2

Cells	Organ/Source	Cell type/Description/ Disease Properties
HeLa	Human Cervix, adult, female (black)	HeLa cells, adherent, epithelial Grown in 10% FCS medium adenocarcinoma,
Jurkat	Human Lymphocytes (male, 14 yrs)	Suspension, pseudodiploid, Grown in 10% FCS medium acute T cell leukemia;
Daudi	Human peripheral blood, Male (16 yrs, black)	B lymphoblast, suspension, 10% FCS Burkitt's lymphoma;
293	Kidney fetus	Adherent, epithelial, hypotriploid, 10% heat-inactivated horse serum
Rh30	Lung (alveolar)	Rhabdomyosarcoma Soft tissue tumor cells
A375	Human skin, male 54-yrs, Caucasian	Adherent fibroblast. 10 % FBS
T98G	Human Brain, Male, Caucasian, 61 yrs	Adherent fibroblast. 10 % FBS glioblastoma multiforme, hyperpentaploid
HCT-116	Colon, Adult, male	Adherent, epithelial, 10% FCS colorectal carcinoma
Hep-G2	originally thought to be epidermoid carcinoma of the larynx, subsequently found to arose via HeLa cell contamination	Adherent, epithelial, Occasional polyploids

**Sample Processing:** Cell lines were grown under defined cell culture condition and harvested in log-phase. Cells were washed in PBS and dissolved in SDS-PAGE sample buffer (reduced). The total protein extracts should contain most cytoplasmic and membrane proteins. Protein was measured and equalized with respect to total proteins and beta-actin immunostaining.

**SDS-Gel Electrophoresis and blotting:** Tissue protein extracts were mixed with 2X standard Laemmli **reducing** buffer, heated for 5 min at 90oC. Approx **10 ug total proteins** were run on **4-20%-reducing SDS-mini gels** at 200 V for approx. 45 min. **High range mol. Wt markers** were loaded on each gel. The position of markers from top to bottom is: Markers (kda): **A** (top) 200, 119 (marked); 97, 66, 55, 36, 31, 21, 14, and 6 kda (**J**) positions are marked (markers if different will be identified on the blot).

The proteins were transferred to **PVDF** membranes using mini-transblot cells. Homogeneity of protein transfer in the sample was verified using water soluble dye and **blocked** with milk-based buffer (#80062). Protein lanes were identified and marked (lanes 1-9). **Mol Wt standards have been marked** (A-J identified on the blot).



Total protein profile of **Human Cancer Cells Protein Explorer Blot**