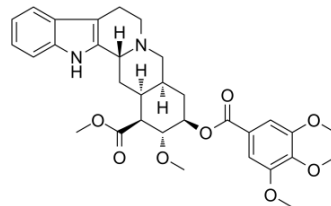


## Deserpidine

<b>Cat. No.:</b>	HY-107339												
<b>CAS No.:</b>	131-01-1												
<b>Molecular Formula:</b>	C <sub>32</sub> H <sub>38</sub> N <sub>2</sub> O <sub>8</sub>												
<b>Molecular Weight:</b>	578.65												
<b>Target:</b>	Angiotensin-converting Enzyme (ACE)												
<b>Pathway:</b>	Metabolic Enzyme/Protease												
<b>Storage:</b>	<table border="0"> <tr> <td>Powder</td> <td>-20°C</td> <td>3 years</td> </tr> <tr> <td></td> <td>4°C</td> <td>2 years</td> </tr> <tr> <td>In solvent</td> <td>-80°C</td> <td>6 months</td> </tr> <tr> <td></td> <td>-20°C</td> <td>1 month</td> </tr> </table>	Powder	-20°C	3 years		4°C	2 years	In solvent	-80°C	6 months		-20°C	1 month
Powder	-20°C	3 years											
	4°C	2 years											
In solvent	-80°C	6 months											
	-20°C	1 month											



### SOLVENT & SOLUBILITY

<b>In Vitro</b>	DMSO : 100 mg/mL (172.82 mM; Need ultrasonic)				
		Solvent Concentration	Mass 1 mg	5 mg	10 mg
	<b>Preparing Stock Solutions</b>	1 mM	1.7282 mL	8.6408 mL	17.2816 mL
		5 mM	0.3456 mL	1.7282 mL	3.4563 mL
10 mM		0.1728 mL	0.8641 mL	1.7282 mL	
Please refer to the solubility information to select the appropriate solvent.					
<b>In Vivo</b>	1. Add each solvent one by one: 10% DMSO >> 40% PEG300 >> 5% Tween-80 >> 45% saline Solubility: ≥ 2.5 mg/mL (4.32 mM); Clear solution  2. Add each solvent one by one: 10% DMSO >> 90% corn oil Solubility: ≥ 2.5 mg/mL (4.32 mM); Clear solution				

### BIOLOGICAL ACTIVITY

<b>Description</b>	Deserpidine (Harmony) is an alkaloid isolated from the root of Rauwolfia canescens related to Reserpine. Deserpidine is used as an antihypertensive agent and a tranquilizer. Deserpidine is a competitive angiotensin converting enzyme (ACE) inhibitor. Deserpidine also decreases angiotensin II-induced aldosterone secretion by the adrenal cortex <sup>[1][2][3]</sup> .
<b>IC<sub>50</sub> &amp; Target</b>	Angiotensin converting enzyme (ACE) <sup>[3]</sup>
<b>In Vitro</b>	Deserpidine is an effective ganglionic blocking agent, which differs from Reserpine only by the absence of a methoxy group at C-11. Deserpidine has been used in the treatment of hypertension and psychosis. In addition, Deserpidine appears to act as a controller of other cardiac disorders <sup>[1][2]</sup> . MCE has not independently confirmed the accuracy of these methods. They are for reference only.

---

## REFERENCES

- [1]. Varchi G, et al. Synthesis of deserpidine from reserpine. J Nat Prod. 2005 Nov;68(11):1629-31.
- [2]. Zhang H, et al. Liquid chromatography/tandem mass spectrometry method for the quantification of deserpidine in human plasma: Application to a pharmacokinetic study. J Chromatogr B Analyt Technol Biomed Life Sci. 2009 Oct 1;877(27):3221-5.
- [3]. Fulton SC, et al. Comparison of the effectiveness of deserpidine, reserpine, and alpha-methyltyrosine on brain biogenic amines. Fed Proc. 1976 Dec;35(14):2558-62.
- 

**Caution: Product has not been fully validated for medical applications. For research use only.**

**India Contact:**

Life Technologies (India) Pvt. Ltd.

306, Aggarwal City Mall, Opposite M2K Pitampura, Delhi – 110034 (INDIA). Ph: +91-11-42208000, 42208111, 42208222, Mobile: +91-9810521400, Fax: +91-11-42208444

Email: [customerservice@lifetechindia.com](mailto:customerservice@lifetechindia.com) Website: [www.lifetechindia.com](http://www.lifetechindia.com)