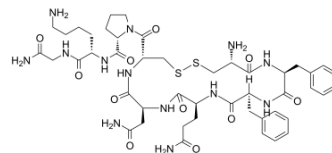


Felypressin

Cat. No.:	HY-A0182												
CAS No.:	56-59-7												
Molecular Formula:	C ₄₆ H ₆₅ N ₁₃ O ₁₁ S ₂												
Molecular Weight:	1040.22												
Sequence:	Cys-Phe-Phe-Gln-Asn-Cys-Pro-Lys-Gly-NH ₂ (Disulfide bridge: Cys1-Cys6)												
Sequence Shortening:	CFFQNCPKG-NH ₂ (Disulfide bridge: Cys1-Cys6)												
Target:	Vasopressin Receptor												
Pathway:	GPCR/G Protein												
Storage:	<table border="0"> <tr> <td>Powder</td> <td>-20°C</td> <td>3 years</td> </tr> <tr> <td></td> <td>4°C</td> <td>2 years</td> </tr> <tr> <td>In solvent</td> <td>-80°C</td> <td>6 months</td> </tr> <tr> <td></td> <td>-20°C</td> <td>1 month</td> </tr> </table>	Powder	-20°C	3 years		4°C	2 years	In solvent	-80°C	6 months		-20°C	1 month
Powder	-20°C	3 years											
	4°C	2 years											
In solvent	-80°C	6 months											
	-20°C	1 month											



SOLVENT & SOLUBILITY

In Vitro

DMSO : ≥ 10.4 mg/mL (10.00 mM)
 * "≥" means soluble, but saturation unknown.

Preparing Stock Solutions	Solvent		Mass		
	Concentration		1 mg	5 mg	10 mg
	1 mM		0.9613 mL	4.8067 mL	9.6134 mL
	5 mM		0.1923 mL	0.9613 mL	1.9227 mL
	10 mM		0.0961 mL	0.4807 mL	0.9613 mL

Please refer to the solubility information to select the appropriate solvent.

BIOLOGICAL ACTIVITY

Description	Felypressin (PLV-2) is a non-catecholamine vasoconstrictor and a vasopressin 1 agonist. Felypressin is widely used in dental procedures ^{[1][2]} .
IC₅₀ & Target	Vasopressin 1 ^[2]
In Vitro	Felypressin is a synthetic hormone of the posterior pituitary lobe characterized by vasoconstrictor properties that is widely used in dental procedures. The vasoconstrictor action of Felypressin seems to be mediated by V1 receptors of the blood vessel smooth muscle cells ^[1] . MCE has not independently confirmed the accuracy of these methods. They are for reference only.
In Vivo	Felypressin can reduce toxicity during dental procedures. Felypressin increases the diastolic blood pressure of hypertensive

patients with controlled blood pressure^[1].

Cardiovascular effects of Felypressin (240 ng/kg; intravenous injection) are studied in Wistar rats. Felypressin induces a pressor effect. Felypressin depends on V1 receptors to induce pressor and bradycardic effects, and that it produces a high relationship between bradycardia and mean arterial pressure variation depending on area postrema and central V1 receptors^[2].

MCE has not independently confirmed the accuracy of these methods. They are for reference only.

REFERENCES

[1]. Bronzo AL et al. Felypressin increases blood pressure during dental procedures in hypertensive patients. Arq Bras Cardiol. 2012 Aug;99(2):724-31.

[2]. Cecanho R et al. Cardiovascular effects of felypressin. Anesth Prog. 2006 Winter;53(4):119-25.

Caution: Product has not been fully validated for medical applications. For research use only.

India Contact:

Life Technologies (India) Pvt. Ltd.

306, Aggarwal City Mall, Opposite M2K Pitampura, Delhi – 110034 (INDIA). Ph: +91-11-42208000, 42208111, 42208222, Mobile: +91-9810521400, Fax: +91-11-42208444
Email: customerservice@lifetechindia.com Website: www.lifetechindia.com