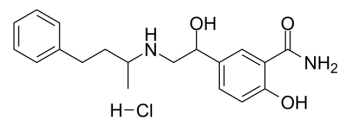


Labetalol hydrochloride

Cat. No.:	HY-B1108
CAS No.:	32780-64-6
Molecular Formula:	C ₁₉ H ₂₅ ClN ₂ O ₃
Molecular Weight:	364.87
Target:	Adrenergic Receptor
Pathway:	GPCR/G Protein; Neuronal Signaling
Storage:	4°C, sealed storage, away from moisture and light * In solvent : -80°C, 6 months; -20°C, 1 month (sealed storage, away from moisture and light)



SOLVENT & SOLUBILITY

In Vitro

DMSO : ≥ 100 mg/mL (274.07 mM)
 H₂O : 20 mg/mL (54.81 mM; Need ultrasonic)
 * "≥" means soluble, but saturation unknown.

	Solvent Concentration	Mass		
		1 mg	5 mg	10 mg
Preparing Stock Solutions	1 mM	2.7407 mL	13.7035 mL	27.4070 mL
	5 mM	0.5481 mL	2.7407 mL	5.4814 mL
	10 mM	0.2741 mL	1.3704 mL	2.7407 mL

Please refer to the solubility information to select the appropriate solvent.

In Vivo

- Add each solvent one by one: 10% DMSO >> 40% PEG300 >> 5% Tween-80 >> 45% saline
Solubility: ≥ 2.5 mg/mL (6.85 mM); Clear solution
- Add each solvent one by one: 10% DMSO >> 90% (20% SBE-β-CD in saline)
Solubility: ≥ 2.5 mg/mL (6.85 mM); Clear solution
- Add each solvent one by one: 10% DMSO >> 90% corn oil
Solubility: ≥ 2.5 mg/mL (6.85 mM); Clear solution

BIOLOGICAL ACTIVITY

Description

Labetalol hydrochloride is a mixed alpha/beta adrenergic antagonist that is used to treat high blood pressure.

CUSTOMER VALIDATION

-
- J Med Chem. 2021 Feb 23.
 - J Pharmaceut Biomed. 2020, 113870.
 - Int J Clin Pract. 2021 Jun 12;e14509.

See more customer validations on www.MedChemExpress.com

Caution: Product has not been fully validated for medical applications. For research use only.

India Contact:

Life Technologies (India) Pvt. Ltd.

306, Aggarwal City Mall, Opposite M2K Pitampura, Delhi – 110034 (INDIA). Ph: +91-11-42208000, 42208111, 42208222, Mobile: +91-9810521400, Fax: +91-11-42208444

Email: customerservice@lifetechindia.com Website: www.lifetechindia.com