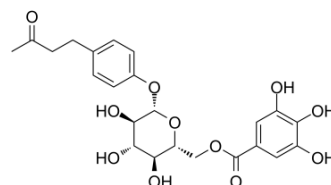


## Lindleyin

Cat. No.:	HY-N2448
CAS No.:	59282-56-3
Molecular Formula:	C <sub>23</sub> H <sub>26</sub> O <sub>11</sub>
Molecular Weight:	478.45
Target:	Estrogen Receptor/ERR
Pathway:	Others
Storage:	Please store the product under the recommended conditions in the Certificate of Analysis.



### BIOLOGICAL ACTIVITY

#### Description

Lindleyin, isolated from Rhei rhizoma, mediates hormonal effects through estrogen receptors. Lindleyin binds to ER $\alpha$  with estrogenic activity<sup>[1]</sup>.

### REFERENCES

[1]. Usui T, et al. The phytochemical lindleyin, isolated from Rhei rhizoma, mediates hormonal effects through estrogen receptors. J Endocrinol. 2002 Nov;175(2):289-96.

**Caution: Product has not been fully validated for medical applications. For research use only.**