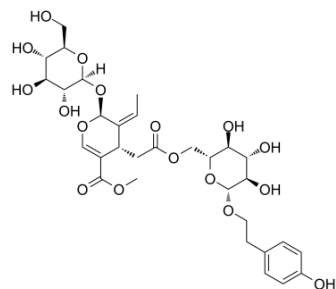


## Specneuzhenide

|                           |  |
|---------------------------|--|
| <b>Cat. No.:</b>          | HY-N6075   |
| <b>CAS No.:</b>           | 449733-84-0  |
| <b>Molecular Formula:</b> | C <sub>31</sub> H <sub>42</sub> O <sub>17</sub>  |
| <b>Molecular Weight:</b>  | 686.65   |
| <b>Target:</b>            | Others   |
| <b>Pathway:</b>           | Others   |
| <b>Storage:</b>           | 4°C, protect from light<br>* In solvent : -80°C, 6 months; -20°C, 1 month (protect from light) |



### SOLVENT & SOLUBILITY

#### In Vitro

DMSO : ≥ 100 mg/mL (145.63 mM)  
\* "≥" means soluble, but saturation unknown.

| Preparing Stock Solutions | Solvent Concentration | Mass      |           |            |
|---------------------------|-----------------------|-----------|-----------|------------|
|                           |                       | 1 mg      | 5 mg      | 10 mg      |
|                           | 1 mM                  | 1.4563 mL | 7.2817 mL | 14.5635 mL |
|                           | 5 mM                  | 0.2913 mL | 1.4563 mL | 2.9127 mL  |
|                           | 10 mM                 | 0.1456 mL | 0.7282 mL | 1.4563 mL  |

Please refer to the solubility information to select the appropriate solvent.

#### In Vivo

1. Add each solvent one by one: 10% DMSO >> 40% PEG300 >> 5% Tween-80 >> 45% saline  
Solubility: ≥ 2.5 mg/mL (3.64 mM); Clear solution

### BIOLOGICAL ACTIVITY

#### Description

Specneuzhenide (Nuezhenide) is a phenol glycoside isolated from *Ligustrum sinense*. Specneuzhenide (Nuezhenide) possesses anti-tumor activity<sup>[1][2]</sup>.

### REFERENCES

[1]. OuYang Mingan, et al. Studies on the phenol glycoside constituents of *Ligustrum sinense*. *Guangxi Zhiwu*. 01 Jan 2003, 23(3):276-278.

[2]. Chen L, et al. Prediction of anti-tumor chemical probes of a traditional Chinese medicine formula by HPLC fingerprinting combined with molecular docking. *Eur J Med Chem*. 2014 Aug 18;83:294-306.

---

**Caution: Product has not been fully validated for medical applications. For research use only.**

India Contact:  
Life Technologies (India) Pvt. Ltd.  
306, Aggarwal City Mall, Opposite M2K Pitampura, Delhi – 110034 (INDIA). Ph: +91-11-42208000, 42208111, 42208222, Mobile: +91-9810521400, Fax: +91-11-42208444  
Email: [customerservice@lifetechindia.com](mailto:customerservice@lifetechindia.com) Website: [www.lifetechindia.com](http://www.lifetechindia.com)