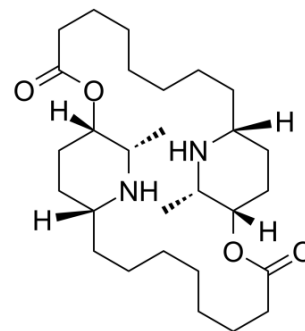


Carpaine

Cat. No.:	HY-N7016
CAS No.:	3463-92-1
Molecular Formula:	C ₂₈ H ₅₀ N ₂ O ₄
Molecular Weight:	478.71
Target:	Parasite
Pathway:	Anti-infection
Storage:	Please store the product under the recommended conditions in the Certificate of Analysis.



BIOLOGICAL ACTIVITY

Description	Carpaine is an alkaloid isolated from <i>Carica papaya</i> Linn with anti-thrombocytopenic activity, exhibits potent activity in sustaining platelet counts with no acute toxicity ^[1] . Carpaine has anti-plasmodial activity to prevent malaria ^[2] .
In Vivo	Carpaine affects the myocardium directly, it reduces cardiac output, stroke volume, stroke work, and cardiac power in rat, which has been studied for its cardiovascular effects ^[3] . MCE has not independently confirmed the accuracy of these methods. They are for reference only.

REFERENCES

- [1]. Zunjar V, et al. Antithrombocytopenic activity of carpaine and alkaloidal extract of *Carica papaya* Linn. leaves in busulfan induced thrombocytopenic Wistar rats. *J Ethnopharmacol.* 2016 Apr 2;181:20-5.
- [2]. Julianti T, et al. Quantification of the antiplasmodial alkaloid carpaine in papaya (*Carica papaya*) leaves. *Planta Med.* 2014 Aug;80(13):1138-42.
- [3]. Hornick CA, et al. Effect of carpaine, a papaya alkaloid, on the circulatory function in the rat. *Res Commun Chem Pathol Pharmacol.* 1978 Nov;22(2):277-89.

Caution: Product has not been fully validated for medical applications. For research use only.