

Brucella Antibody rapid test kit

Catalog No: LT67002AYSL

1. Principle

This test card is based on fast immuno-chromatography technique to detect Brucella Ab in serum, whole blood of pig, bovine, goat, deer and pet qualitatively. When testing, Brucella Ab in sample combine with antigen coated by colloid gold forming complexes, moving forward to the other head. When reaching the T-line, the specific antigen on the membrane capture the complexes and appear a T line, C line appears, means the test is valid. The T line appears, means there is Brucella Ab in the sample.

This test kit cannot be used to distinguish antibody produced by wild virus infection or vaccine immunization.

2. Specifications: 25 tests/kit

3. Components

- | | |
|------------------------------|-----------|
| 1) Brucella Ab Test cassette | 25 pieces |
| 2) Dropper | 25 pieces |
| 3) Sample Buffer | 25 tubes |
| 4) Manual | 1 piece |

4. Sample preparation

4.1 Whole blood

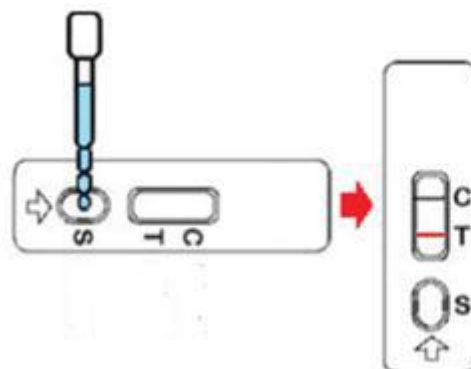
Collect fresh whole blood, test on the same day.

4.2 Serum

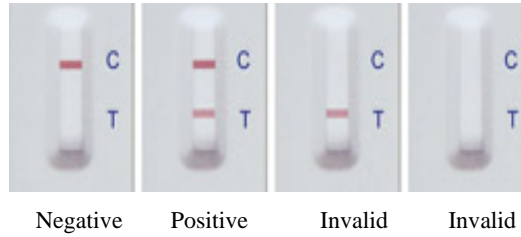
Collect blood, put at 37°C for 1-2h, take the supernatant, centrifuge at 1500r/min for 10min, separate the serum. The serum can store for 2-3 days at 4°C, for long term storage, store at -20°C in frozen.

5. Operation procedures

- 1) Read the manual carefully and return the test card and sample to room temperature before use.
- 2) Take out test card, use dropper to absorb the prepared sample, add 1 drop into well mark "S", then use dropper add 2-3 drops of sample buffer to the well mark "S".
- 3) Read the results in 5-10min at room temperature.



6. Results



Negative (-) : no color reaction on Test Line (T Line), only on Control Line (C Line) being seen red color reaction. It means there is no Brucella Ab in sample or the levels are lower than the detection threshold;

Positive (+) : Both on T Line and C line being seen red color reaction. It means there is Brucella Ab in sample;

Invalid: No color reaction on C Line. It means the operation is wrong or the test card is invalid.

7. Notice

- 1) The test card can be used only once at room temperature, do not reuse or use test card out of expiry date.
- 2) Return all reagents and sample into room temperature before use, after the test card is unsealed, please use it as soon as possible.
- 3) Do not use water or other liquids as a negative control for testing.
- 4) If the card is found to be out of date, damaged or contaminated at the time of purchase, please replace it at the place of purchase.
- 5) Be careful when prepare sample, wear glove and mask.
- 6) If the whole blood sample cannot be tested immediately, anticoagulants need to be added and cannot be frozen; serum sample can store in frozen, avoid repeated freezing and thawing.
- 7) This product is only for in vitro rapid diagnostic veterinary use, cannot be quantified, do only qualitative testing.
- 8) The product test results for reference only, for confirmation, please refer to the relevant national standard methods.

8. Storage and expiry date

Storage: Store at 2-30 °C in dark, sealed, dry place, no frozen.

Expiry date: 24 months; date of production is on box.

**FOR RESEARCH USE ONLY.
NOT FOR USE IN DIAGNOSTIC PROCEDURES.**

Life Technologies (India) Pvt Ltd.

Life Technologies® is a registered trademark of Life Technologies (India) Pvt Ltd.

www.lifetechindia.com