

Product Specification Sheet

Cat. #MA-20391

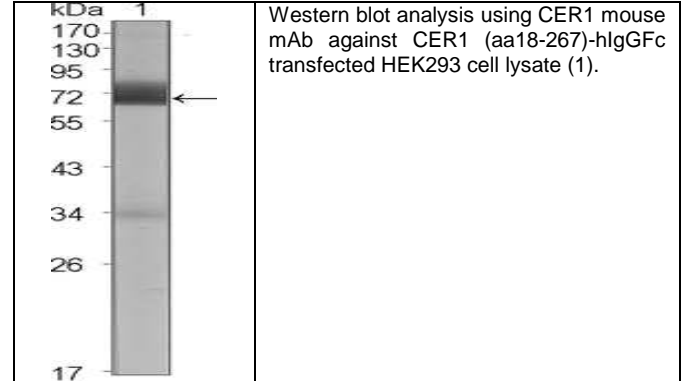
Mouse Monoclonal Anti Human cerberus 1 (CER1); Ascites

SIZE : 100 ul

CER1: cerberus 1, cysteine knot superfamily, homolog (*Xenopus laevis*). It is a cytokine member of the cysteine knot superfamily, characterized by nine conserved cysteines and a cysteine knot region. The cerberus-related cytokines, together with Dan and DRM/Gremlin, represent a group of bone morphogenetic protein (BMP) antagonists that can bind directly to BMPs and inhibit their activity.

Source of Antigen and Antibodies

Antigen	Purified recombinant fragment of human CER1 expressed in <i>E. Coli</i> .
Ab Host/type	Balb/c mouse. IgG1 Ascetic fluid containing 0.05% sodium azide.
2-Ab	Goat Anti-mouse IgG-HRP conjugate Cat # 40320 (AP, biotin, FITC conjugates also available)
-ve control IgG	Cat # 20008-1, Mouse (non-immune) Serum IgG, purified, suitable for ELISA, Western, IHC as -ve control



References:

Dev Biol. 1998;194(2):135-51. Growth Factors. 2004;22(4):233-41.

**All products are for In vitro research use only.*

Related material available from ADI

Isotype controls:

Catalog#	Product Description
20102-101	Mouse IgG1 isotype control, purified
20102-101-APC	Mouse IgG1-APC conjugate (isotype control)
20102-101-B	Mouse IgG1-Biotin conjugate (isotype control)
20102-101-F	Mouse IgG1-FITC conjugate (isotype control)
20102-101-FP	Mouse IgG1-FITC-PE conjugate (isotype control)
20102-101-HP	Mouse IgG1-HRP conjugate (isotype control)
20102-101-PC5	Mouse IgG1-PE-Cy5 conjugate (isotype control)
20102-101-PE	Mouse IgG1-PE conjugate (isotype control)

MA-20391

120401A

Suggested Dilutions:

Western blot	1:500 - 1:2000
Immunohistochemistry (IHC):	1:200 - 1:1000
Immunocytochemistry (ICC):	N/A
Flow cytometry (FCM):	N/A
ELISA	1:5000 – 1:100000

Form: Antibodies are supplied in PBS, pH 7.5, 0.05% azide and 0.1% BSA in liquid (0.5-1 mg/ml) or lyophilized in the same buffer. Reconstitute powder in 100 ul water or PBS. Store at -20°C or below in suitable size Aliquots.

Shipping: 4°C for solutions and room temp for powder.