

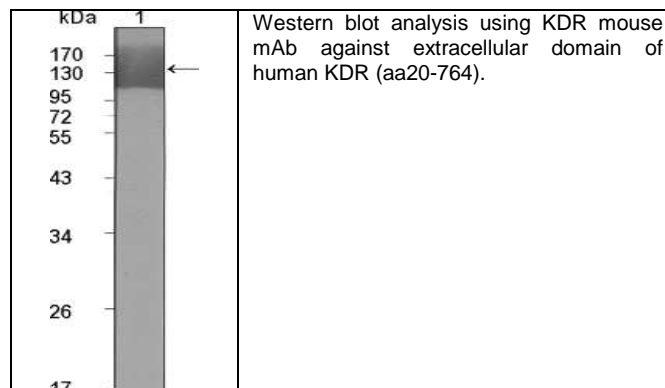
Product Specification Sheet

Cat. #MA-20394

Mouse Monoclonal Anti Human Kinase insert domain receptor (KDR); Ascites

SIZE : 100 ul

KDR has also been designated as VEGFR-2 (Vascular endothelial growth factor receptor 2), CD309 (cluster of differentiation 309) and Flk1 (fetal liver kinase 1). Vascular endothelial growth factor (VEGF) is a major growth factor for endothelial cells. KDR is one of the two receptors of the VEGF. This receptor, known as kinase insert domain receptor, is a type III receptor tyrosine kinase. It functions as the main mediator of VEGF-induced endothelial proliferation, survival, migration, tubular morphogenesis and sprouting. The signalling and trafficking of this receptor are regulated by multiple factors, including Rab GTPase, P2Y purine nucleotide receptor, integrin alphaVbeta3, T-cell protein tyrosine phosphatase, etc.. Mutations of this gene are implicated in infantile capillary hemangiomas.



Source of Antigen and Antibodies

Antigen	Purified recombinant extracellular fragment of human KDR (aa20-764) fused with hlgGfc tag expressed in HEK293 cells.
Ab Host/type	Balb/c mouse. IgG1 Ascetic fluid containing 0.05% sodium azide.
2-Ab	Goat Anti-mouse IgG-HRP conjugate Cat # 40320 (AP, biotin, FITC conjugates also available)
-ve control IgG	Cat # 20008-1, Mouse (non-immune) Serum IgG, purified, suitable for ELISA, Western, IHC as -ve control

References:

Blood. 2004;104(3):788-94. FEBS Lett. 2002;512(1-3):107-10. EMBO J. 2001;20(11):2768-78.

**All products are for In vitro research use only.*

Related material available from ADI

MA-20394

120401A

Isotype controls:

Catalog#	Product Description
20102-101	Mouse IgG1 isotype control, purified
20102-101-APC	Mouse IgG1-APC conjugate (isotype control)
20102-101-B	Mouse IgG1-Biotin conjugate (isotype control)
20102-101-F	Mouse IgG1-FITC conjugate (isotype control)
20102-101-FP	Mouse IgG1-FITC-PE conjugate (isotype control)
20102-101-HP	Mouse IgG1-HRP conjugate (isotype control)
20102-101-PC5	Mouse IgG1-PE-Cy5 conjugate (isotype control)
20102-101-PE	Mouse IgG1-PE conjugate (isotype control)

Suggested Dilutions:

Western blot	1:500 - 1:2000
Immunohistochemistry (IHC):	1:200 - 1:1000
Immunocytochemistry (ICC):	1:200 - 1:1000
Flow cytometry (FCM):	N/A
ELISA	1:5000 - 1:100000

Form: Antibodies are supplied in PBS, pH 7.5, 0.05% azide and 0.1% BSA in liquid (0.5-1 mg/ml) or lyophilized in the same buffer. Reconstitute powder in 100 ul water or PBS. Store at -20°C or below is suitable size Aliquotes.

Shipping: 4°C for solutions and room temp for powder.