

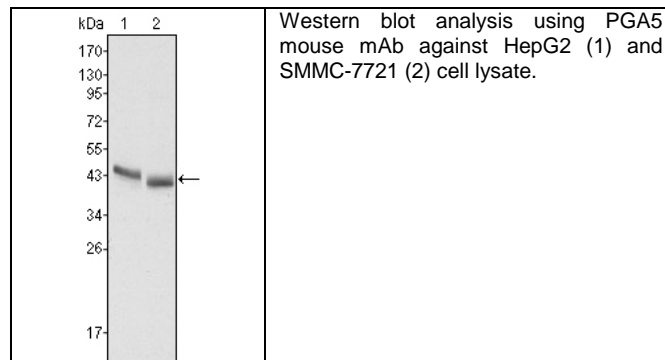
Product Specification Sheet

Cat. #MA-20395

Mouse Monoclonal Anti Human WNT10B; Ascites

SIZE : 100 ul

WNT10B: wingless-type MMTV integration site family, member 10B. The WNT family consists of structurally related secreted signaling proteins. These proteins have been implicated in oncogenesis and in several developmental processes, including regulation of cell fate and patterning during embryogenesis. WNT10B is a member of the WNT gene family. It may be involved in breast cancer, and its protein signaling is likely a molecular switch that governs adipogenesis. This protein is 96% identical to the mouse Wnt10B protein at the amino acid level. The WNT10B gene is clustered with another family member, WNT1, in the chromosome 12q13 region.



**Source of Antigen and Antibodies**

<b>Antigen</b>	Purified recombinant fragment of human WNT10B expressed in E. Coli.
<b>Ab Host/type</b>	Balb/c mouse. IgG1 Ascetic fluid containing 0.05% sodium azide.
<b>2-Ab</b>	Goat Anti-mouse IgG-HRP conjugate Cat # 40320 (AP, biotin, FITC conjugates also available)
<b>-ve control IgG</b>	Cat # 20008-1, Mouse (non-immune) Serum IgG, purified, suitable for ELISA, Western, IHC as -ve control

**References:**

Oncogene. 1997;14(10):1249-53. Int J Oncol. 2001 19(6):1187-92

*\*All products are for In vitro research use only.*

**Related material available from ADI**

MA-20395

120401A

**Isotype controls:**

Catalog#	Product Description
20102-101	Mouse IgG1 isotype control, purified
20102-101-APC	Mouse IgG1-APC conjugate (isotype control)
20102-101-B	Mouse IgG1-Biotin conjugate (isotype control)
20102-101-F	Mouse IgG1-FITC conjugate (isotype control)
20102-101-FP	Mouse IgG1-FITC-PE conjugate (isotype control)
20102-101-HP	Mouse IgG1-HRP conjugate (isotype control)
20102-101-PC5	Mouse IgG1-PE-Cy5 conjugate (isotype control)
20102-101-PE	Mouse IgG1-PE conjugate (isotype control)

**Suggested Dilutions:**

Western blot	1:500 - 1:2000
Immunohistochemistry (IHC):	1:200 - 1:1000
Immunocytochemistry (ICC):	1:200 - 1:1000
Flow cytometry (FCM):	N/A
ELISA	1:5000 - 1:100000

**Form:** Antibodies are supplied in PBS, pH 7.5, 0.05% azide and 0.1% BSA in liquid (0.5-1 mg/ml) or lyophilized in the same buffer. Reconstitute powder in 100 ul water or PBS. Store at -20°C or below in suitable size Aliquots.

**Shipping:** 4°C for solutions and room temp for powder.