

Product Specification Sheet

Cat. #MA-20399

Mouse Monoclonal Anti Human J(phosphatase and tensin homolog) (JAK3) ; Ascites

SIZE : 100 ul

PTEN (phosphatase and tensin homolog) was identified as a tumor suppressor that is mutated in a large number of cancers at high frequency. This protein is a phosphatidylinositol-3,4,5-trisphosphate 3-phosphatase. It contains a tensin like domain as well as a catalytic domain similar to that of the dual specificity protein tyrosine phosphatases. Unlike most of the protein tyrosine phosphatases, this protein preferentially dephosphorylates phosphoinositide substrates. It negatively regulates intracellular levels of phosphatidylinositol-3,4,5-trisphosphate in cells and functions as a tumor suppressor by negatively regulating AKT/PKB signaling pathway.

Source of Antigen and Antibodies

Antigen	Purified recombinant fragment of PTEN expressed in E. Coli.
Ab Host/type	Balb/c mouse. IgG1 Ascetic fluid containing 0.05% sodium azide.
2-Ab	Goat Anti-mouse IgG-HRP conjugate Cat # 40320 (AP, biotin, FITC conjugates also available)
-ve control IgG	Cat # 20008-1, Mouse (non-immune) Serum IgG, purified, suitable for ELISA, Western, IHC as -ve control

Isotype controls:

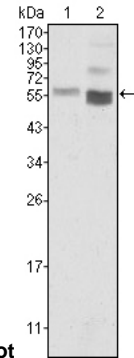
Catalog#	Product Description
20102-101	Mouse IgG1 isotype control, purified
20102-101-APC	Mouse IgG1-APC conjugate (isotype)
20102-101-B	Mouse IgG1-Biotin conjugate (isotype)
20102-101-F	Mouse IgG1-FITC conjugate (isotype)
20102-101-FP	Mouse IgG1-FITC-PE conjugate (isotype)
20102-101-HP	Mouse IgG1-HRP conjugate (isotype)
20102-101-PC5	Mouse IgG1-PE-Cy5 conjugate (isotype)
20102-101-PE	Mouse IgG1-PE conjugate (isotype control)

Suggested Dilutions:

Western blot	1:500 – 1:2000
Immunohistochemistry (IHC):	N/A
Immunocytochemistry (ICC):	1:200 - 1:1000
Flow cytometry (FCM):	1:200 - 1:400
ELISA	1:5000 – 1:10000

Form: Antibodies are supplied in PBS, pH 7.5, 0.05% azide and 0.1% BSA in liquid (0.5-1 mg/ml) or lyophilized in the same buffer. Reconstitute powder in 100 ul water or PBS. Store at -20°C or below in suitable size Aliquots.

Shipping: 4°C for solutions and room temp for powder.



Western Blot

Figure 1: Western blot analysis using PTEN mouse mAb against HeLa (1) and NIH/3T3 (2) cell lysate.

Immunofluorescence analysis

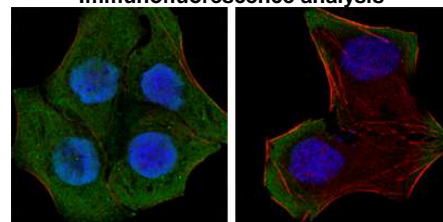


Figure 2: Confocal immunofluorescence analysis of HeLa (left) and HepG2 (right) cells using PTEN mouse mAb (green). Red: Actin filaments have been labeled with DY-554 phalloidin. Blue: DRAQ5 fluorescent DNA dye.

Flow cytometric

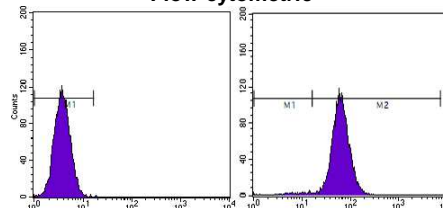


Figure 3: Flow cytometric analysis of HeLa cells using PTEN mouse mAb (right) and negative control (left).

References:

Nat Genet. 1998; 19(4):348-55. Oncogene. 1999; 18(20):3181-5. Eur J Immunol. 2002; 32(4):1196-204.

**All products are for In vitro research use only.*

Related material available from GSI

MA-20399

150826V