

**Product Specification Sheet**

Cat. #MA-20405

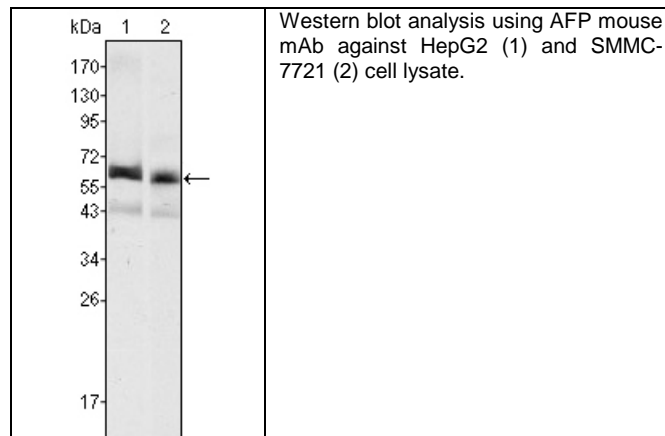
Mouse Monoclonal Anti Human alpha-fetoprotein (AFP); Ascites

SIZE : 100 ul

AFP (alpha-fetoprotein), a major plasma protein produced by the yolk sac and the liver during fetal life. Alpha-fetoprotein expression in adults is often associated with hepatoma or teratoma. However, hereditary persistence of alpha-fetoprotein may also be found in individuals with no obvious pathology. The protein is thought to be the fetal counterpart of serum albumin, and the alpha-fetoprotein and albumin genes are present in tandem in the same transcriptional orientation on chromosome 4. Alpha-fetoprotein is found in monomeric as well as dimeric and trimeric forms, and binds copper, nickel, fatty acids and bilirubin. The level of alpha-fetoprotein in amniotic fluid is used to measure renal loss of protein to screen for spina bifida and anencephaly.

**Source of Antigen and Antibodies**

<b>Antigen</b>	Purified recombinant fragment of human AFP expressed in E. Coli.
<b>Ab Host/type</b>	Balb/c mouse. IgG2b Ascetic fluid containing 0.05% sodium azide.
<b>2-Ab</b>	Goat Anti-mouse IgG-HRP conjugate Cat # 40320 (AP, biotin, FITC conjugates also available)
<b>-ve control IgG</b>	Cat # 20008-1, Mouse (non-immune) Serum IgG, purified, suitable for ELISA, Western, IHC as -ve control



**References:**

Proc Natl Acad Sci U S A. 1985 ;82(21):7160-4. *Pediatr Hematol Oncol.* 2001 ;18(8):509-18. *Tumour Biol.* 2002 ;23(4):202-11.

*\*All products are for In vitro research use only.*

**Related material available from ADI**

MA-20405

120330A

**Isotype controls:**

Catalog#	ProdDescription
20102-103	Mouse IgG2b isotype control, purified
20102-103-B	Mouse IgG2b-Biotin conjugate (isotype control)
20102-103-F	Mouse IgG2b-FITC conjugate (isotype control)
20102-103-FP	Mouse IgG2b-FITC-PE conjugate
20102-103-HP	Mouse IgG2b-HRP conjugate (isotype control)
20102-103-PC5	Mouse IgG2b-PE-Cy5 conjugate (isotype control)
20102-103-PE	Mouse IgG2b-PE conjugate (isotype control)

**Suggested Dilutions:**

Western blot	1:500 – 1:2000
Immunohistochemistry (IHC):	N/A
Immunocytochemistry (ICC):	N/A
Flow cytometry (FCM):	N/A
ELISA	1:5000 – 1:100000

**Form:** Antibodies are supplied in PBS, pH 7.5, 0.05% azide and 0.1% BSA in liquid (0.5-1 mg/ml) or lyophilized in the same buffer. Reconstitute powder in 100 ul water or PBS. Store at -20°C or below in suitable size Aliquotes.

**Shipping:** 4°C for solutions and room temp for powder.