

Product Specification Sheet

Cat. #MA-20407

Mouse Monoclonal Anti Human Metastasis adhesion protein (metadherin) Ascites

SIZE : 100 ul

Metadherin (Metastasis adhesion protein), also known as MTDH, LYsine-Rich CEACAM1 co-isolated (LYRIC), is a novel protein that localizes with the tight junction proteins ZO-1 and occludin in polarized epithelial cells. At the tight junction, it acts not as a structural component, but is rather recruited during the maturation of the tight junction complex. Metadherin is overexpressed in breast cancer tissue and breast tumor xenografts, while much lower levels are expressed in normal breast tissue. Metadherin binds to lung vasculature, one of the four common sites of breast cancer metastasis, through a C-terminal segment in the extracellular domain; blocking this lung-homing domain with antibodies or inhibiting metadherin with siRNA has been reported to inhibit breast cancer metastasis.

Source of Antigen and Antibodies

Antigen	Purified recombinant fragment of human Metadherin expressed in E. Coli.
Ab Host/type	Balb/c mouse. IgG1 Ascetic fluid containing 0.05% sodium azide.
2-Ab	Goat Anti-mouse IgG-HRP conjugate Cat # 40320 (AP, biotin, FITC conjugates also available)
-ve control IgG	Cat # 20008-1, Mouse (non-immune) Serum IgG, purified, suitable for ELISA, Western, IHC as -ve control

Isotype controls:

Catalog#	Product Description
20102-101	Mouse IgG1 isotype control, purified
20102-101-APC	Mouse IgG1-APC conjugate (isotype control)
20102-101-B	Mouse IgG1-Biotin conjugate (isotype control)
20102-101-F	Mouse IgG1-FITC conjugate (isotype control)
20102-101-FP	Mouse IgG1-FITC-PE conjugate (isotype control)
20102-101-HP	Mouse IgG1-HRP conjugate (isotype control)
20102-101-PC5	Mouse IgG1-PE-Cy5 conjugate (isotype control)
20102-101-PE	Mouse IgG1-PE conjugate (isotype control)

Suggested Dilutions:

Western blot	1:500 – 1:2000
Immunohistochemistry (IHC):	1:200 – 1:1000
Immunocytochemistry (ICC):	N/A
Flow cytometry (FCM):	1:200 – 1:400
ELISA	1:10000

Form: Antibodies are supplied in PBS, pH 7.5, 0.05% azide and 0.1% BSA in liquid (0.5-1 mg/ml) or lyophilized in the same buffer. Reconstitute powder in 100 ul water or PBS. Store at -20°C or below is suitable size Aliquotes.

Shipping: 4°C for solutions and room temp for powder.

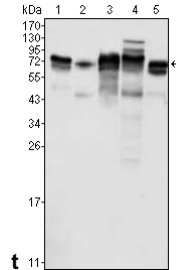


Figure 1: Western blot analysis using Metadherin mouse mAb against K562 (1), SKBR-3 (2), T47D (3), HeLa (4) and MCF-7 (5) cell lysate.

Flow cytometric

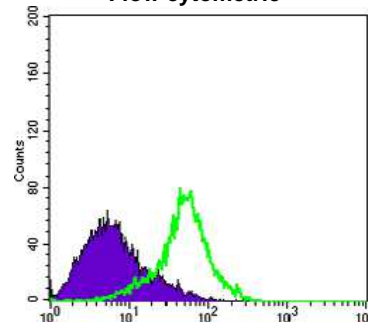


Figure 3: Flow cytometric analysis of HeLa cells using Metadherin mouse mAb (green) and negative control (purple).

Immunohistochemical analysis

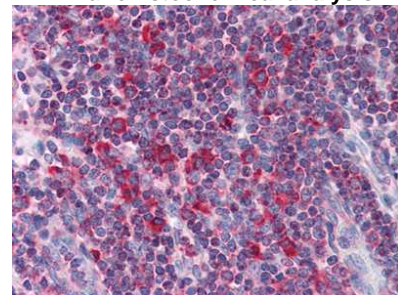


Figure 2: Immunohistochemical analysis of paraffin-embedded human Liver tissues using Metadherin mouse mAb

References:

Cancer Cell. 2004;5(4):365-74. Exp Cell Res. 2004;300(1):134-48.

**All products are for In vitro research use only.*

Related material available from ADI

MA-20407

150826V