

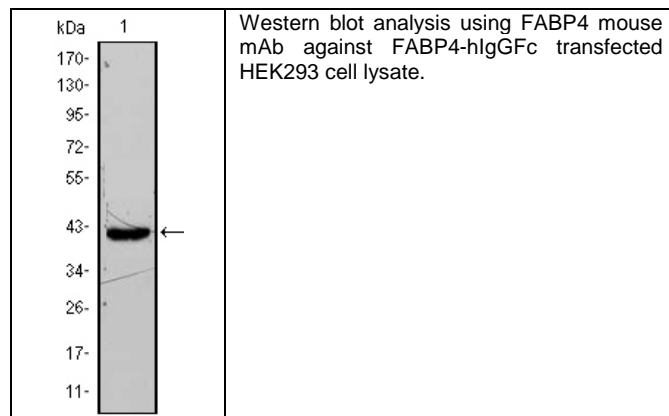
**Product Specification Sheet**

Cat. #MA-20409      Mouse Monoclonal Anti Human Fatty acid binding proteins (FABP); Ascites      SIZE : 100 ul

Fatty acid binding proteins are a family of small, highly conserved, cytoplasmic proteins that bind long chain fatty acids, their coenzymes and other hydrophobic ligands and small molecules in the cytoplasm. It is thought that the role of these proteins includes fatty acid uptake, intracellular lipid transport and metabolism. FABP4 encodes the fatty acid binding protein found in adipocytes. FABP4 knockout mice fed a high-fat and high-calorie diet become obese but develop neither insulin resistance nor diabetes, suggesting that this protein might be a link between obesity and insulin resistance and diabetes. A related study in humans indicated a similar pattern, suggesting that FABP4 may be a potential therapeutic target in the treatment of these disorders.

**Source of Antigen and Antibodies**

<b>Antigen</b>	Purified recombinant fragment of FABP4 expressed in E. Coli.
<b>Ab Host/type</b>	Balb/c mouse. IgG1 Ascetic fluid containing 0.05% sodium azide.
<b>2-Ab</b>	Goat Anti-mouse IgG-HRP conjugate Cat # 40320 (AP, biotin, FITC conjugates also available)
<b>-ve control IgG</b>	Cat # 20008-1, Mouse (non-immune) Serum IgG, purified, suitable for ELISA, Western, IHC as -ve control



**References:**

Proc. Natl. Acad. Sci. 2006.103:6970–75. Science. 1996. 274:1377–79.

*\*All products are for In vitro research use only.*

**Related material available from ADI**

MA-20409      150826V

**Isotype controls:**

Catalog#	Product Description
20102-101	Mouse IgG1 isotype control, purified
20102-101-APC	Mouse IgG1-APC conjugate (isotype)
20102-101-B	Mouse IgG1-Biotin conjugate (isotype)
20102-101-F	Mouse IgG1-FITC conjugate (isotype)
20102-101-FP	Mouse IgG1-FITC-PE conjugate (isotype)
20102-101-HP	Mouse IgG1-HRP conjugate (isotype)
20102-101-PC5	Mouse IgG1-PE-Cy5 conjugate (isotype)
20102-101-PE	Mouse IgG1-PE conjugate (isotype control)

**Suggested Dilutions:**

Western blot	1:500 – 1:2000
Immunohistochemistry (IHC):	N/A
Immunocytochemistry (ICC):	N/A
Flow cytometry (FCM):	N/A
ELISA	1:5000 – 1:100000

**Form:** Antibodies are supplied in PBS, pH 7.5, 0.05% azide and 0.1% BSA in liquid (0.5-1 mg/ml) or lyophilized in the same buffer. Reconstitute powder in 100 ul water or PBS. Store at -20°C or below in suitable size Aliquots.

**Shipping:** 4°C for solutions and room temp for powder.