

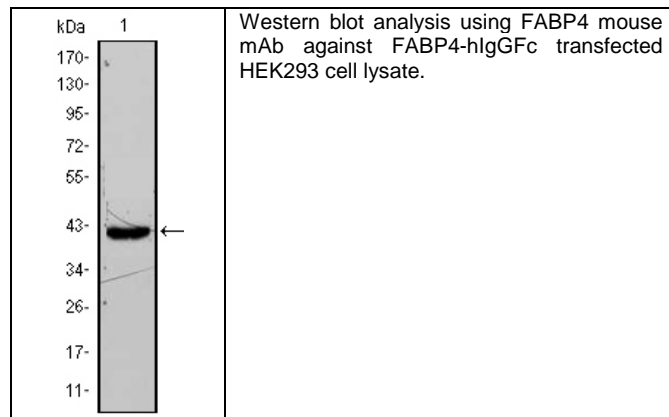
Product Specification Sheet

Cat. #MA-20410 Mouse Monoclonal Anti Human Keratin, type I cytoskeletal 15 (KRT15); Ascites SIZE : 100 ul

The protein encoded by this gene is a member of the keratin gene family. The keratins are intermediate filament proteins responsible for the structural integrity of epithelial cells and are subdivided into cytokeratins and hair keratins. Keratin 15 is a type I keratin without a defined type II partner. Keratin 15 is expressed primarily in the basal keratinocytes of stratified tissues, including the fetal epidermis and fetal nail. Expression of keratin 15 is downregulated in some hyperproliferating situations, such as psoriasis and hypertrophic scars. Because keratinocytes in psoriasis and hypertrophic scars are activated, it is suggested that keratin 15 expression is not compatible with keratinocyte activation and the keratin 15 gene is downregulated to maintain the activated phenotype.

Source of Antigen and Antibodies

Antigen	Purified recombinant fragment of FABP4 expressed in E. Coli.
Ab Host/type	Balb/c mouse. IgG1 Ascetic fluid containing 0.05% sodium azide.
2-Ab	Goat Anti-mouse IgG-HRP conjugate Cat # 40320 (AP, biotin, FITC conjugates also available)
-ve control IgG	Cat # 20008-1, Mouse (non-immune) Serum IgG, purified, suitable for ELISA, Western, IHC as -ve control



References:

Proc. Natl. Acad. Sci. 2006.103:6970–75. Science. 1996. 274:1377–79.
*All products are for In vitro research use only.

Related material available from ADI

MA-20410

120330A

Isotype controls:

Catalog#	Product Description
20102-101	Mouse IgG1 isotype control, purified
20102-101-APC	Mouse IgG1-APC conjugate (isotype control)
20102-101-B	Mouse IgG1-Biotin conjugate (isotype control)
20102-101-F	Mouse IgG1-FITC conjugate (isotype control)
20102-101-FP	Mouse IgG1-FITC-PE conjugate (isotype control)
20102-101-HP	Mouse IgG1-HRP conjugate (isotype control)
20102-101-PC5	Mouse IgG1-PE-Cy5 conjugate (isotype control)
20102-101-PE	Mouse IgG1-PE conjugate (isotype control)

Suggested Dilutions:

Western blot	1:500 – 1:2000
Immunohistochemistry (IHC):	N/A
Immunocytochemistry (ICC):	N/A
Flow cytometry (FCM):	N/A
ELISA	1:5000 – 1:100000

Form: Antibodies are supplied in PBS, pH 7.5, 0.05% azide and 0.1% BSA in liquid (0.5-1 mg/ml) or lyophilized in the same buffer. Reconstitute powder in 100 ul water or PBS. Store at -20°C or below is suitable size Aliquotes.

Shipping: 4°C for solutions and room temp for powder.