

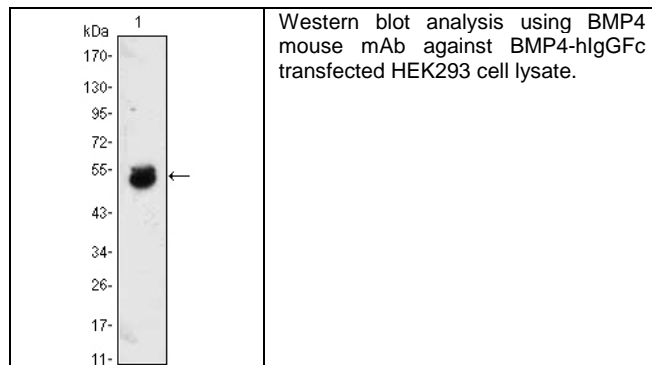
**Product Specification Sheet**

Cat. #MA-20415

Mouse Monoclonal Anti Human Bone morphogenetic proteins (BMP4).; Ascites

SIZE : 100 ul

The protein encoded by this gene is a member of the bone morphogenetic protein family which is part of the transforming growth factor-beta superfamily. The superfamily includes large families of growth and differentiation factors. BMPs (bone morphogenetic proteins) belong to the TGF beta superfamily of structurally related signaling proteins. Members of this superfamily are widely represented throughout the animal kingdom and have been implicated in a variety of developmental processes. Proteins of the TGF beta superfamily are disulfide-linked dimers composed of two 12-15 kDa polypeptide chains. As implied by their name, BMPs initiate, promote and regulate bone development, growth,



**Source of Antigen and Antibodies**

<b>Antigen</b>	Purified recombinant fragment of human BMP4 expressed in E. Coli.
<b>Ab Host/type</b>	Balb/c mouse. IgG1 Ascetic fluid containing 0.05% sodium azide.
<b>2-Ab</b>	Goat Anti-mouse IgG-HRP conjugate Cat # 40320 (AP, biotin, FITC conjugates also available)
<b>-ve control IgG</b>	Cat # 20008-1, Mouse (non-immune) Serum IgG, purified, suitable for ELISA, Western, IHC as -ve control

**References:**

Genomics. 1995;27(3):559-60. DNA Seq. 1995;5(5):273-5. J Bone Miner Res. 2009 4(12):2039-49.

*\*All products are for In vitro research use only.*

**Related material available from ADI**

MA-20415

150826V

**Isotype controls:**

Catalog#	Product Description
20102-101	Mouse IgG1 isotype control, purified
20102-101-APC	Mouse IgG1-APC conjugate (isotype control)
20102-101-B	Mouse IgG1-Biotin conjugate (isotype control)
20102-101-F	Mouse IgG1-FITC conjugate (isotype control)
20102-101-FP	Mouse IgG1-FITC-PE conjugate (isotype control)
20102-101-HP	Mouse IgG1-HRP conjugate (isotype control)
20102-101-PC5	Mouse IgG1-PE-Cy5 conjugate (isotype control)
20102-101-PE	Mouse IgG1-PE conjugate (isotype control)

**Suggested Dilutions:**

Western blot	1:500 – 1:2000
Immunohistochemistry (IHC):	N/A
Immunocytochemistry (ICC):	N/A
Flow cytometry (FCM):	N/A
ELISA	1:5000 – 1:100000

**Form:** Antibodies are supplied in PBS, pH 7.5, 0.05% azide and 0.1% BSA in liquid (0.5-1 mg/ml) or lyophilized in the same buffer. Reconstitute powder in 100 ul water or PBS. Store at -20°C or below is suitable size Aliquotes.

**Shipping:** 4°C for solutions and room temp for powder.