

**Product Specification Sheet**

Cat. #MA-30003 Mouse Monoclonal Anti Human 3-hydroxybutyrate dehydrogenase, type 1 (BDH1);; Ascites

SIZE : 100 ul

BDH1 (3-hydroxybutyrate dehydrogenase, type 1), it is a member of the short-chain dehydrogenase/reductase gene family. This protein forms a homotetrameric lipid-requiring enzyme of the mitochondrial membrane and has a specific requirement for phosphatidylcholine for optimal enzymatic activity. It catalyzes the interconversion of acetoacetate and (R)-3-hydroxybutyrate, the two major ketone bodies produced during fatty acid catabolism.

**Source of Antigen and Antibodies**

<b>Antigen</b>	Purified recombinant fragment of human BDH1 expressed in E. Coli.
<b>Ab Host/type</b>	Balb/c mouse. IgG1 Ascetic fluid containing 0.05% sodium azide.
<b>2-Ab</b>	Goat Anti-mouse IgG-HRP conjugate Cat # 40320 (AP, biotin, FITC conjugates also available)
<b>-ve control IgG</b>	Cat # 20008-1, Mouse (non-immune) Serum IgG, purified, suitable for ELISA, Western, IHC as -ve control

**Isotype controls:**

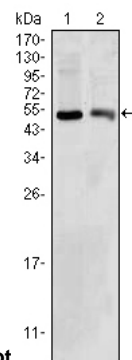
Catalog#	Product Description
20102-101	Mouse IgG1 isotype control, purified
20102-101-APC	Mouse IgG1-APC conjugate (isotype)
20102-101-B	Mouse IgG1-Biotin conjugate (isotype)
20102-101-F	Mouse IgG1-FITC conjugate (isotype)
20102-101-FP	Mouse IgG1-FITC-PE conjugate (isotype)
20102-101-HP	Mouse IgG1-HRP conjugate (isotype)
20102-101-PC5	Mouse IgG1-PE-Cy5 conjugate (isotype)
20102-101-PE	Mouse IgG1-PE conjugate (isotype control)

**Suggested Dilutions:**

Western blot	1:500 – 1:2000
Immunohistochemistry (IHC):	1:200 – 1:1000
Immunocytochemistry (ICC):	N/A
Flow cytometry (FCM):	N/A
ELISA	1:5000 – 1:100000

**Form:** Antibodies are supplied in PBS, pH 7.5, 0.05% azide and 0.1% BSA in liquid (0.5-1 mg/ml) or lyophilized in the same buffer. Reconstitute powder in 100 ul water or PBS. Store at -20°C or below in suitable size Aliquots.

**Shipping:** 4°C for solutions and room temp for powder.



**Western Blot**

Figure 1: Western blot analysis using BDH1 mouse mAb against HepG2 (1) and NIH/3T3 (2) cell lysate.

**Immunohistochemical analysis**

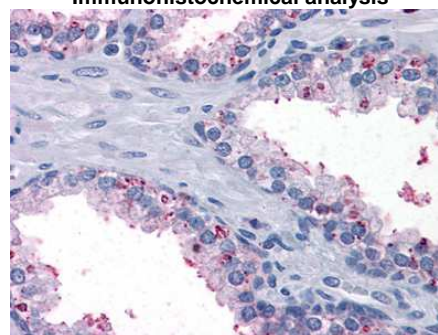


Figure 2: Immunohistochemical analysis of paraffin-embedded human Prostate tissues using anti-BDH1 mouse mAb

**Immunohistochemical analysis**

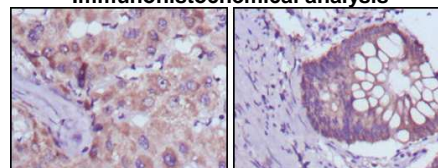


Figure 3: Immunohistochemical analysis of paraffin-embedded human liver cancer (left) and colorectal cancer tissues (right) using BDH1 mouse mAb with DAB staining.

**References:**

Biochemistry.1996;35(25):815865. Biochemistry.2000;39(39):11928-38.

*\*All products are for In vitro research use only.*

**Related material available from ADI**

MA-30003

150824V