

## Product Specification Sheet

Cat. #MA-30004

Mouse Monoclonal Anti Human Glutamic-oxaloacetic transaminase (GOT2). Ascites

SIZE : 100 ul

Glutamic-oxaloacetic transaminase is a pyridoxal phosphate-dependent enzyme which exists in cytoplasmic and inner-membrane mitochondrial forms, GOT1 and GOT2, respectively. GOT plays a role in amino acid metabolism and the urea and tricarboxylic acid cycles. The two enzymes are homodimeric and show close homology.

### Source of Antigen and Antibodies

<b>Antigen</b>	Purified recombinant fragment of human GOT2 expressed in E. Coli
<b>Ab Host/type</b>	Balb/c mouse. IgG1 Ascetic fluid containing 0.05% sodium azide.
<b>2-Ab</b>	Goat Anti-mouse IgG-HRP conjugate Cat # 40320 (AP, biotin, FITC conjugates also available)
<b>-ve control IgG</b>	Cat # 20008-1, Mouse (non-immune) Serum IgG, purified, suitable for ELISA, Western, IHC as -ve control

### Isotype controls:

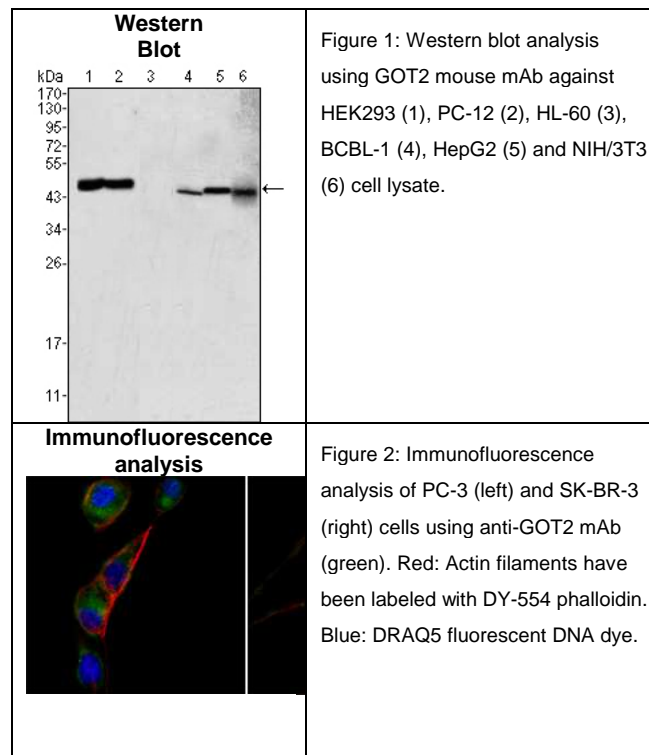
Catalog#	Product Description
20102-101	Mouse IgG1 isotype control, purified
20102-101-APC	Mouse IgG1-APC conjugate (isotype control)
20102-101-B	Mouse IgG1-Biotin conjugate (isotype control)
20102-101-F	Mouse IgG1-FITC conjugate (isotype control)
20102-101-FP	Mouse IgG1-FITC-PE conjugate (isotype control)
20102-101-HP	Mouse IgG1-HRP conjugate (isotype control)
20102-101-PC5	Mouse IgG1-PE-Cy5 conjugate (isotype control)
20102-101-PE	Mouse IgG1-PE conjugate (isotype control)

### Suggested Dilutions:

Western blot	1:500 – 1:2000
Immunohistochemistry (IHC):	N/A
Immunocytochemistry (ICC):	1:200 – 1:1000
Flow cytometry (FCM):	N/A
ELISA	1:5000 – 1:100000

**Form:** Antibodies are supplied in PBS, pH 7.5, 0.05% azide and 0.1% BSA in liquid (0.5-1 mg/ml) or lyophilized in the same buffer. Reconstitute powder in 100 ul water or PBS. Store at -20°C or below is suitable size Aliquotes.

**Shipping:** 4°C for solutions and room temp for powder.



### References:

Hepatology. 1998 ;27(4):1064-74. 2. Cell. 2005 23;122(6):957-68.

*\*All products are for In vitro research use only.*

### Related material available from ADI

MA-30004

150824V