

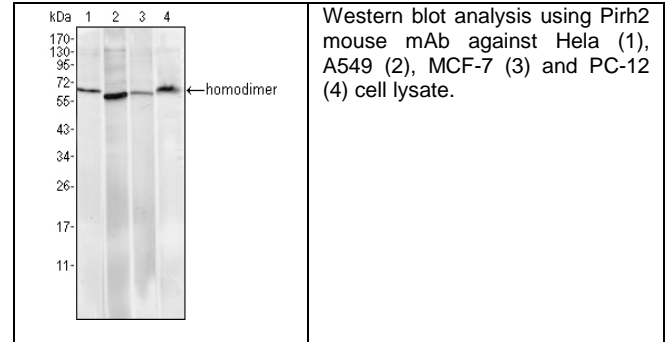
Product Specification Sheet

Cat. #MA-30005 Mouse Monoclonal Anti Human P53 induced RING-H2 protein (Pirh2). Ascites SIZE : 100 ul

Pirh 2 (P53 induced RING-H2 protein), also known as RCHY1, it forms dimers through its N- and C-terminus in cells. The Pirh2 has ubiquitin-protein ligase activity and it binds with p53 and promotes the ubiquitin-mediated proteosomal degradation of p53. The Pirh2 is oncogenic because loss of p53 function contributes directly to malignant tumor development. Pirh2 expression decreases the level of p53, and a decrease of endogenous Pirh2 expression increases p53 levels. Pirh2 is therefore considered, together with MDM2, to act as a negative regulator of p53 function.

Source of Antigen and Antibodies

Antigen	Purified recombinant fragment of human Pirh2 expressed in E. Coli.
Ab Host/type	Balb/c mouse. IgG1 Ascetic fluid containing 0.05% sodium azide.
2-Ab	Goat Anti-mouse IgG-HRP conjugate Cat # 40320 (AP, biotin, FITC conjugates also available)
-ve control IgG	Cat # 20008-1, Mouse (non-immune) Serum IgG, purified, suitable for ELISA, Western, IHC as -ve control



References:

Biochem Biophys Res Commun. 2007 Dec 14;364(2):344-50. J Natl Cancer Inst. 2004 Nov 17;96(22):1718-21. Exp Cell Res. 2006 Oct 15;312(17):3370-8.
4. Cell. 2003 Mar 21;112(6):779-91.

**All products are for In vitro research use only.*

Related material available from ADI

MA-30005

120330A

Isotype controls:

Catalog#	Product Description
20102-101	Mouse IgG1 isotype control, purified
20102-101-APC	Mouse IgG1-APC conjugate (isotype control)
20102-101-B	Mouse IgG1-Biotin conjugate (isotype control)
20102-101-F	Mouse IgG1-FITC conjugate (isotype control)
20102-101-FP	Mouse IgG1-FITC-PE conjugate (isotype control)
20102-101-HP	Mouse IgG1-HRP conjugate (isotype control)
20102-101-PC5	Mouse IgG1-PE-Cy5 conjugate (isotype control)
20102-101-PE	Mouse IgG1-PE conjugate (isotype control)

Suggested Dilutions:

Western blot	1:500 – 1:2000
Immunohistochemistry (IHC):	1:200 – 1:1000
Immunocytochemistry (ICC):	1:200 – 1:1000
Flow cytometry (FCM):	1:200 – 1:400
ELISA	1:5000 – 1:100000

Form: Antibodies are supplied in PBS, pH 7.5, 0.05% azide and 0.1% BSA in liquid (0.5-1 mg/ml) or lyophilized in the same buffer. Reconstitute powder in 100 ul water or PBS. Store at -20°C or below is suitable size Aliquotes.

Shipping: 4°C for solutions and room temp for powder.