

Product Specification Sheet

Cat. #MA-30009

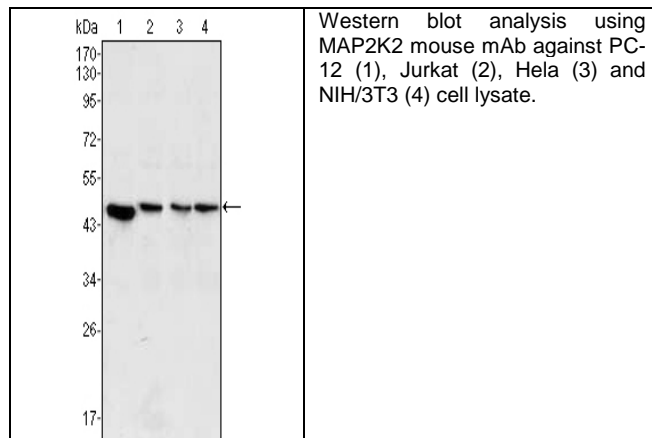
Mouse Monoclonal Anti Human (MAP2K2); Ascites

SIZE : 100 ul

MAP2K2, also called MEK2, it is a dual specificity protein kinase that belongs to the MAP kinase kinase family. This kinase is known to play a critical role in mitogen growth factor signal transduction. It phosphorylates and thus activates MAPK1/ERK2 and MAPK2/ERK3. The activation of this kinase itself is dependent on the Ser/Thr phosphorylation by MAP kinase kinase kinases. Mutations in this gene cause cardiofaciocutaneous syndrome (CFC syndrome), a disease characterized by heart defects, mental retardation, and distinctive facial features similar to those found in Noonan syndrome. The inhibition or degradation of this kinase is also found to be involved in the pathogenesis of Yersinia and anthrax.

Source of Antigen and Antibodies

Antigen	Purified recombinant fragment of human MAP2K2 expressed in E. Coli.
Ab Host/type	Balb/c mouse. IgG1 Ascetic fluid containing 0.05% sodium azide.
2-Ab	Goat Anti-mouse IgG-HRP conjugate Cat # 40320 (AP, biotin, FITC conjugates also available)
-ve control IgG	Cat # 20008-1, Mouse (non-immune) Serum IgG, purified, suitable for ELISA, Western, IHC as -ve control



References:

Mol Cell Biol. 1993 ;13(8):4679-90. Eur J Biochem. 1995 ;234(1):32-8. Oncogene. 1998 Jul 9;17(1):57-65.
*All products are for *In vitro* research use only.

Related material available from ADI

MA-30009

120330A

Isotype controls:

Catalog#	Product Description
20102-101	Mouse IgG1 isotype control, purified
20102-101-APC	Mouse IgG1-APC conjugate (isotype control)
20102-101-B	Mouse IgG1-Biotin conjugate (isotype control)
20102-101-F	Mouse IgG1-FITC conjugate (isotype control)
20102-101-FP	Mouse IgG1-FITC-PE conjugate (isotype control)
20102-101-HP	Mouse IgG1-HRP conjugate (isotype control)
20102-101-PC5	Mouse IgG1-PE-Cy5 conjugate (isotype control)
20102-101-PE	Mouse IgG1-PE conjugate (isotype control)

Suggested Dilutions:

Western blot	1:500 – 1:2000
Immunohistochemistry (IHC):	N/A
Immunocytochemistry (ICC):	1:200 – 1:1000
Flow cytometry (FCM):	1:200 – 1:400
ELISA	1:5000 – 1:100000

Form: Antibodies are supplied in PBS, pH 7.5, 0.05% azide and 0.1% BSA in liquid (0.5-1 mg/ml) or lyophilized in the same buffer. Reconstitute powder in 100 ul water or PBS. Store at -20°C or below in suitable size Aliquotes.

Shipping: 4°C for solutions and room temp for powder.