

Product Specification Sheet

Cat. #MA-30011

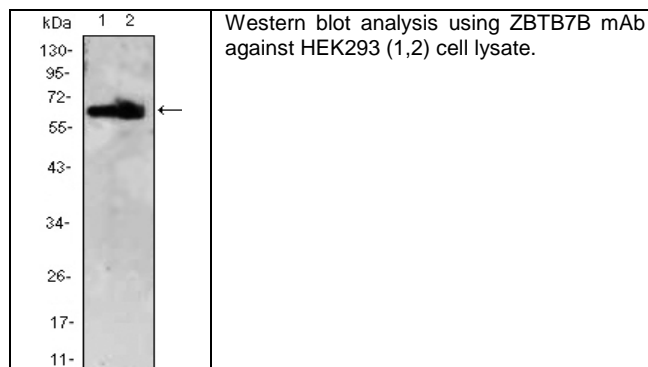
Mouse Monoclonal Anti Human ZBTB7B;. Ascites

SIZE : 100 ul

ZBTB7B is a transcription regulator that acts as a key regulator of lineage commitment of immature T-cell precursors. It is necessary and sufficient for commitment of CD4 lineage, while its absence causes CD8 commitment. Development of immature T-cell precursors (thymocytes) to either the CD4 helper or CD8 killer T-cell lineages correlates precisely with their T-cell receptor specificity for major histocompatibility complex class II or class I molecules, respectively. ZBTB7B is a transcriptional repressor of the collagen COL1A1 and COL1A2 genes. It may also function as a repressor of fibronectin and possibly other extracellular matrix genes.

Source of Antigen and Antibodies

| | |
|------------------------|--|
| Antigen | Purified recombinant fragment of human ZBTB7B expressed in E. Coli. |
| Ab Host/type | Balb/c mouse. IgG1 Ascetic fluid containing 0.05% sodium azide. |
| 2-Ab | Goat Anti-mouse IgG-HRP conjugate Cat # 40320 (AP, biotin, FITC conjugates also available) |
| -ve control IgG | Cat # 20008-1, Mouse (non-immune) Serum IgG, purified, suitable for ELISA, Western, IHC as -ve control |



References:

Proc Natl Acad Sci U S A. 1994 ;91(20):9372-6. J Biol Chem. 2000 1;275(35):27421-38

**All products are for In vitro research use only.*

Related material available from ADI

MA-30012

120330A

Isotype controls:

| Catalog# | Product Description |
|---------------|--|
| 20102-101 | Mouse IgG1 isotype control, purified |
| 20102-101-APC | Mouse IgG1-APC conjugate (isotype control) |
| 20102-101-B | Mouse IgG1-Biotin conjugate (isotype control) |
| 20102-101-F | Mouse IgG1-FITC conjugate (isotype control) |
| 20102-101-FP | Mouse IgG1-FITC-PE conjugate (isotype control) |
| 20102-101-HP | Mouse IgG1-HRP conjugate (isotype control) |
| 20102-101-PC5 | Mouse IgG1-PE-Cy5 conjugate (isotype control) |
| 20102-101-PE | Mouse IgG1-PE conjugate (isotype control) |

Suggested Dilutions:

| | |
|-----------------------------|-------------------|
| Western blot | 1:500 – 1:2000 |
| Immunohistochemistry (IHC): | 1:200 – 1:400 |
| Immunocytochemistry (ICC): | 1:200 – 1:400 |
| Flow cytometry (FCM): | N/A |
| ELISA | 1:5000 – 1:100000 |

Form: Antibodies are supplied in PBS, pH 7.5, 0.05% azide and 0.1% BSA in liquid (0.5-1 mg/ml) or lyophilized in the same buffer. Reconstitute powder in 100 ul water or PBS. Store at -20°C or below is suitable size Aliquotes.

Shipping: 4°C for solutions and room temp for powder.