

Product Specification Sheet

Cat. #MA-30014

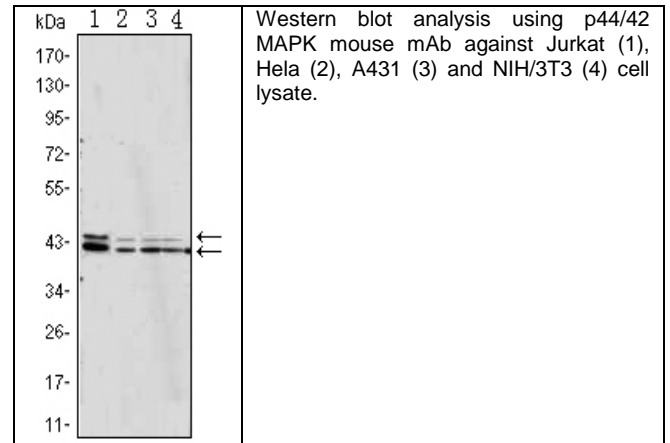
Mouse Monoclonal Anti Human p44/42 MAPK (Erk1/2); Ascites

SIZE : 100 ul

Mitogen-activated protein kinases (MAPKs) are a widely conserved family of serine/threonine protein kinases involved in many cellular programs such as cell proliferation, differentiation, motility, and death. The p44/42 MAPK (Erk1/2) signaling pathway can be activated in response to a diverse range of extracellular stimuli including mitogens, growth factors, and cytokines and is an important target in the diagnosis and treatment of cancer. Upon stimulation, a sequential three-part protein kinase cascade is initiated, consisting of a MAP kinase kinase kinase (MAPKKK or MAP3K), a MAP kinase kinase (MAPKK or MAP2K), and a MAP kinase (MAPK). Multiple p44/42 MAP3Ks have been identified, including members of the Raf family as well as Mos and Tpl2/Cot. MEK1 and MEK2 are the primary MAPKKs in this pathway. MEK1 and MEK2 activate p44 and p42 through phosphorylation of activation loop residues Thr202/Tyr204 and Thr185/Tyr187, respectively. Several downstream targets of p44/42 have been identified, including p90RSK and the transcription factor Elk-1. p44/42 are negatively regulated by a family of dual-specificity (Thr/Tyr) MAPK phosphatases, known as DUSPs or MKPs, along with MEK inhibitors such as U0126 and PD98059.

same buffer. Reconstitute powder in 100 ul water or PBS. Store at -20°C or below in suitable size Aliquotes.

Shipping: 4°C for solutions and room temp for powder.



Source of Antigen and Antibodies

Antigen	Purified recombinant fragment of human CK7 expressed in E. Coli.
Ab Host/type	Balb/c mouse. IgG2b Ascetic fluid containing 0.05% sodium azide.
2-Ab	Goat Anti-mouse IgG-HRP conjugate Cat # 40320 (AP, biotin, FITC conjugates also available)
-ve control IgG	Cat # 20008-1, Mouse (non-immune) Serum IgG, purified, suitable for ELISA, Western, IHC as -ve control

References:

FEBS Lett. 1992 Jun 15;304(2-3):170-8. Proc Natl Acad Sci U S A. 1995 Jun 6;92(12):5361-5. J Biol Chem. 2009 Nov 27;284(48):33456-65. BMC Biol. 2009 Oct 27;7:70.
**All products are for In vitro research use only.*

Related material available from ADI

MA-30014

120330A

Isotype controls:

Catalog#	ProdDescription
20102-103	Mouse IgG2b isotype control, purified
20102-103-B	Mouse IgG2b-Biotin conjugate (isotype control)
20102-103-F	Mouse IgG2b-FITC conjugate (isotype control)
20102-103-FP	Mouse IgG2b-FITC-PE conjugate
20102-103-HP	Mouse IgG2b-HRP conjugate (isotype control)
20102-103-PC5	Mouse IgG2b-PE-Cy5 conjugate (isotype control)
20102-103-PE	Mouse IgG2b-PE conjugate (isotype control)

Suggested Dilutions:

Western blot	1:500 – 1:2000
Immunohistochemistry (IHC):	N/A
Immunocytochemistry (ICC):	N/A
Flow cytometry (FCM):	1:200 – 1:400
ELISA	1:5000 – 1:100000

Form: Antibodies are supplied in PBS, pH 7.5, 0.05% azide and 0.1% BSA in liquid (0.5-1 mg/ml) or lyophilized in the