

**Product Specification Sheet**

Cat. #MA-30018

Mouse Monoclonal Anti Human ETS1; Ascites

SIZE : 100 ul

The ETS1 is a transcription factor known to regulate expression of a number of genes involved in extracellular matrix remodeling. ETS1 is absent from normal gastric epithelium but is expressed in approximately 60% of gastric carcinomas and oral squamous cell carcinomas with a significant correlation to the tumor stage.

**Source of Antigen and Antibodies**

<b>Antigen</b>	Purified recombinant fragment of human ETS1 expressed in E. Coli.
<b>Ab Host/type</b>	Balb/c mouse. IgG1 Ascetic fluid containing 0.05% sodium azide.
<b>2-Ab</b>	Goat Anti-mouse IgG-HRP conjugate Cat # 40320 (AP, biotin, FITC conjugates also available)
<b>-ve control IgG</b>	Cat # 20008-1, Mouse (non-immune) Serum IgG, purified, suitable for ELISA, Western, IHC as -ve control

**Isotype controls:**

Catalog#	Product Description
20102-101	Mouse IgG1 isotype control, purified
20102-101-APC	Mouse IgG1-APC conjugate (isotype control)
20102-101-B	Mouse IgG1-Biotin conjugate (isotype control)
20102-101-F	Mouse IgG1-FITC conjugate (isotype control)
20102-101-FP	Mouse IgG1-FITC-PE conjugate (isotype control)
20102-101-HP	Mouse IgG1-HRP conjugate (isotype control)
20102-101-PC5	Mouse IgG1-PE-Cy5 conjugate (isotype control)
20102-101-PE	Mouse IgG1-PE conjugate (isotype control)

**Suggested Dilutions:**

Western blot	1:500 – 1:2000
Immunohistochemistry (IHC):	1:200 – 1:1000
Immunocytochemistry (ICC):	1:200 – 1:1000
Flow cytometry (FCM):	1:200 – 1:400
ELISA	1:5000 – 1:100000

**Form:** Antibodies are supplied in PBS, pH 7.5, 0.05% azide and 0.1% BSA in liquid (0.5-1 mg/ml) or lyophilized in the same buffer. Reconstitute powder in 100 ul water or PBS. Store at -20°C or below in suitable size Aliquots.

**Shipping:** 4°C for solutions and room temp for powder.

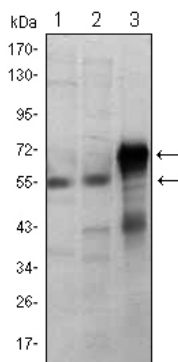


Figure 1: Western blot analysis using ETS1 mouse mAb against Jurkat (1), HepG2 (2) and ETS1-hlgGfC transfected HEK293 (3) cell lysate.

**Immunohistochemical analysis**

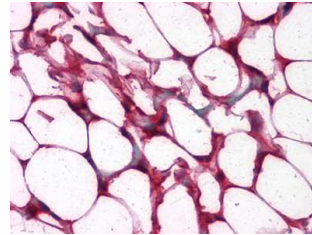


Figure 2: Immunohistochemical analysis of paraffin-embedded human Colon, Adipocytes tissues using anti-ETS1 mouse mAb

**Immunofluorescence analysis**

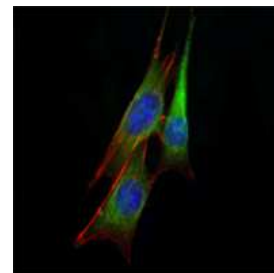


Figure 3: Immunofluorescence analysis of NIH/3T3 cells using anti-ETS1 mAb (green). Blue: DRAQ5 fluorescent DNA dye.

**Flow cytometric**

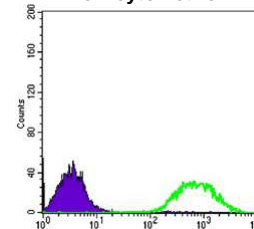


Figure 4: Flow cytometric analysis of Jurkat cells using anti-ETS1 mAb (green) and negative control (purple).

**References:**

DNA Cell Biol. 2005 ;24(2):126-32. Mol Hum Reprod. 2006 12(2):71-6.

*\*All products are for In vitro research use only.*

**Related material available from ADI**

MA-30018

150824V