

Product Specification Sheet

Cat. #MA-30025

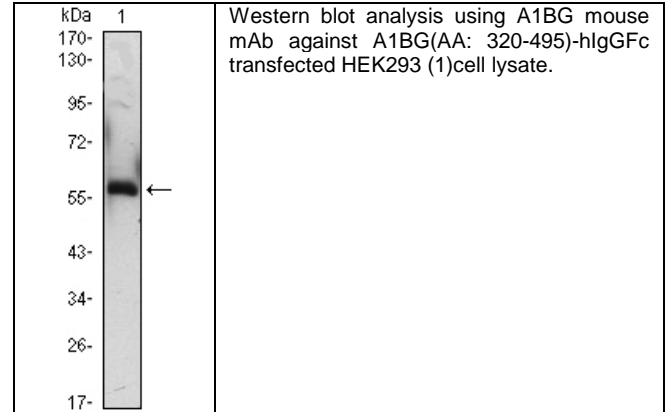
Mouse Monoclonal Anti Human alpha-1-B glycoprotein (A1BG); Ascites

SIZE : 100 ul

A1BG is a plasma glycoprotein of unknown function. It shows sequence similarity to the variable regions of some immunoglobulin supergene family member proteins. A1BG was recently shown to bind cysteine rich secretory protein 3 (CRISP 3) with high affinity, and it has been suggested that A1BG protects against the potentially toxic effects of CRISP 3 in the circulation.

**Source of Antigen and Antibodies**

<b>Antigen</b>	Purified recombinant fragment of human A1BG expressed in E. Coli.
<b>Ab Host/type</b>	Balb/c mouse. IgG1 Ascetic fluid containing 0.05% sodium azide.
<b>2-Ab</b>	Goat Anti-mouse IgG-HRP conjugate Cat # 40320 (AP, biotin, FITC conjugates also available)
<b>-ve control IgG</b>	Cat # 20008-1, Mouse (non-immune) Serum IgG, purified, suitable for ELISA, Western, IHC as -ve control



**References:**

Hum Genet. 1987 ;76(2):111-5. Proteomics. 2004 ;4(2):454-65. BMC Cancer. 2008 ;8:241.

*\*All products are for In vitro research use only.*

**Isotype controls:**

Catalog#	Product Description
20102-101	Mouse IgG1 isotype control, purified
20102-101-APC	Mouse IgG1-APC conjugate (isotype control)
20102-101-B	Mouse IgG1-Biotin conjugate (isotype control)
20102-101-F	Mouse IgG1-FITC conjugate (isotype control)
20102-101-FP	Mouse IgG1-FITC-PE conjugate (isotype control)
20102-101-HP	Mouse IgG1-HRP conjugate (isotype control)
20102-101-PC5	Mouse IgG1-PE-Cy5 conjugate (isotype control)
20102-101-PE	Mouse IgG1-PE conjugate (isotype control)

**Related material available from ADI**

MA-30025

120402A

**Suggested Dilutions:**

Western blot	1:500 – 1:2000
Immunohistochemistry (IHC):	1:200 – 1:1000
Immunocytochemistry (ICC):	N/A
Flow cytometry (FCM):	N/A
ELISA	1:5000 – 1:100000

**Form:** Antibodies are supplied in PBS, pH 7.5, 0.05% azide and 0.1% BSA in liquid (0.5-1 mg/ml) or lyophilized in the same buffer. Reconstitute powder in 100 ul water or PBS. Store at -20°C or below in suitable size Aliquots.

**Shipping:** 4°C for solutions and room temp for powder.