

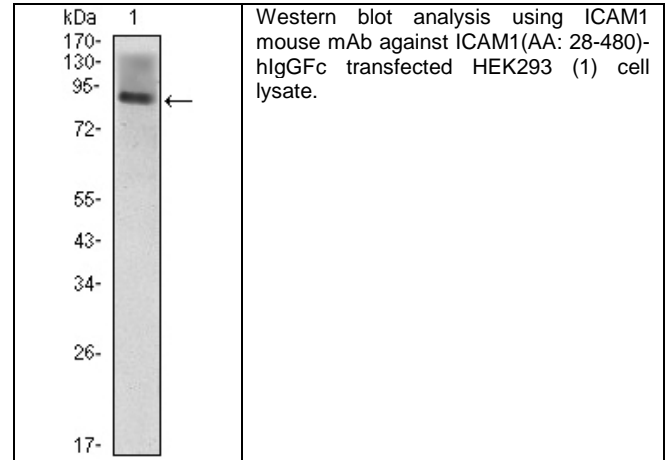
Product Specification Sheet

Cat. #MA-30030 Mouse Monoclonal Anti Human Heat Intercellular adhesion molecule 1 (ICAM1); Ascites SIZE : 100 ul

ICAM1 is a 85-110 kDa single chain type 1 integral membrane glycoprotein with an extracellular domain of five immunoglobulin superfamily repeats, a transmembrane region and a cytoplasmic domain. It shares considerable amino acid sequence homology with ICAM3 and with ICAM2. ICAM1 is expressed by activated endothelial cells. It is detected on cells of many other lineages (e.g. epithelial cells, fibroblasts, chondrocytes, B lymphocytes, T lymphocytes (low), monocytes, macrophages, dendritic cells and neutrophils), with lower levels that increase in inflammation. ICAM1 is also detected in some carcinoma and melanoma cells. Soluble ICAM1 is detectable in the plasma and is elevated in patients with various inflammatory syndromes. It is the receptor for rhinoviruses and malaria.

**Source of Antigen and Antibodies**

<b>Antigen</b>	Purified recombinant fragment of human ICAM1(28-480aa) expressed in E. Coli.
<b>Ab Host/type</b>	Balb/c mouse. IgG1 Ascetic fluid containing 0.05% sodium azide.
<b>2-Ab</b>	Goat Anti-mouse IgG-HRP conjugate Cat # 40320 (AP, biotin, FITC conjugates also available)
<b>-ve control IgG</b>	Cat # 20008-1, Mouse (non-immune) Serum IgG, purified, suitable for ELISA, Western, IHC as -ve control



**References:**

J Neurosci Res. 1992 Feb;31(2):365-74. J Cell Biol. 2002 Jun 24;157(7):1233-45. J Hepatol. 2004 Mar;40(3):375-9.

*\*All products are for In vitro research use only.*

**Related material available from ADI**

MA-30029

120402A

**Isotype controls:**

Catalog#	Product Description
20102-101	Mouse IgG1 isotype control, purified
20102-101-APC	Mouse IgG1-APC conjugate (isotype control)
20102-101-B	Mouse IgG1-Biotin conjugate (isotype control)
20102-101-F	Mouse IgG1-FITC conjugate (isotype control)
20102-101-FP	Mouse IgG1-FITC-PE conjugate (isotype control)
20102-101-HP	Mouse IgG1-HRP conjugate (isotype control)
20102-101-PC5	Mouse IgG1-PE-Cy5 conjugate (isotype control)
20102-101-PE	Mouse IgG1-PE conjugate (isotype control)

**Suggested Dilutions:**

Western blot	1:500 – 1:2000
Immunohistochemistry (IHC):	N/A
Immunocytochemistry (ICC):	N/A
Flow cytometry (FCM):	N/A
ELISA	1:5000 – 1:100000

**Form:** Antibodies are supplied in PBS, pH 7.5, 0.05% azide and 0.1% BSA in liquid (0.5-1 mg/ml) or lyophilized in the same buffer. Reconstitute powder in 100 ul water or PBS. Store at -20°C or below is suitable size Aliquotes.

**Shipping:** 4°C for solutions and room temp for powder.