

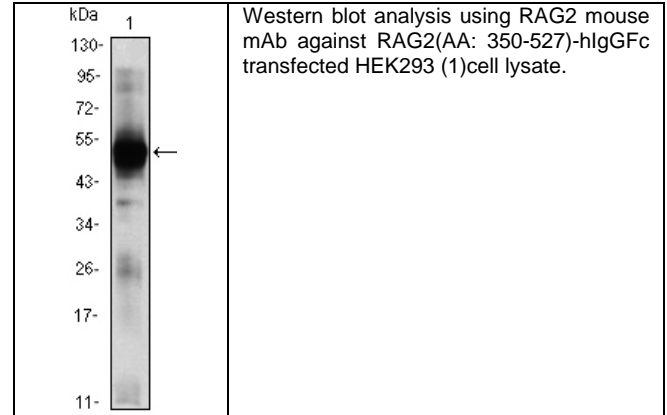
Product Specification Sheet

Cat. #MA-30031

Mouse Monoclonal Anti Human RAG2 Ascites

SIZE : 100 ul

This gene encodes a protein that is involved in the initiation of V(D)J recombination during B and T cell development. This protein forms a complex with the product of the adjacent recombination activating gene 1, and this complex can form double-strand breaks by cleaving DNA at conserved recombination signal sequences. The recombination activating gene 1 component is thought to contain most of the catalytic activity, while the N-terminal of the recombination activating gene 2 component is thought to form a six-bladed propeller in the active core that serves as a binding scaffold for the tight association of the complex with DNA. A C-terminal plant homeodomain finger-like motif in this protein is necessary for interactions with chromatin components, specifically with histone H3 that is trimethylated at lysine 4. Mutations in this gene cause Omenn syndrome, a form of severe combined immunodeficiency associated with autoimmune-like symptoms.



Source of Antigen and Antibodies

Antigen	Purified recombinant fragment of human RAG2(350-527aa) expressed in E. Coli.
Ab Host/type	Balb/c mouse. IgG1 Ascetic fluid containing 0.05% sodium azide.
2-Ab	Goat Anti-mouse IgG-HRP conjugate Cat # 40320 (AP, biotin, FITC conjugates also available)
-ve control IgG	Cat # 20008-1, Mouse (non-immune) Serum IgG, purified, suitable for ELISA, Western, IHC as -ve control

References:

Biol Chem. 2004 Sep 10;279(37):38360-8. Immunity. 2005 Aug;23(2):203-12. J Clin Invest. 2010 Apr 1;120(4):1337-44. doi: 10.1172/JCI41305.

**All products are for In vitro research use only.*

Related material available from ADI

MA-30031

120402A

Isotype controls:

Catalog#	Product Description
20102-101	Mouse IgG1 isotype control, purified
20102-101-APC	Mouse IgG1-APC conjugate (isotype control)
20102-101-B	Mouse IgG1-Biotin conjugate (isotype control)
20102-101-F	Mouse IgG1-FITC conjugate (isotype control)
20102-101-FP	Mouse IgG1-FITC-PE conjugate (isotype control)
20102-101-HP	Mouse IgG1-HRP conjugate (isotype control)
20102-101-PC5	Mouse IgG1-PE-Cy5 conjugate (isotype control)
20102-101-PE	Mouse IgG1-PE conjugate (isotype control)

Suggested Dilutions:

Western blot	1:500 – 1:2000
Immunohistochemistry (IHC):	N/A
Immunocytochemistry (ICC):	N/A
Flow cytometry (FCM):	N/A
ELISA	1:5000 – 1:100000

Form: Antibodies are supplied in PBS, pH 7.5, 0.05% azide and 0.1% BSA in liquid (0.5-1 mg/ml) or lyophilized in the same buffer. Reconstitute powder in 100 ul water or PBS. Store at -20°C or below is suitable size Aliquots.

Shipping: 4°C for solutions and room temp for powder.