

Product Specification Sheet

Cat. #MA-30032

Mouse Monoclonal Anti Human Synaptophysin (SYP).; Ascites

SIZE : 100 ul

Synaptophysin (p38) is an integral membrane protein of small synaptic vesicles in brain and endocrine cells. Synaptophysin contains four transmembrane domains that form a hexameric channel or gap junction-like pore. Synaptophysin binds to the SNARE protein synaptobrevin/VAMP, which prevents the inclusion of synaptobrevin in the synaptic vesicle fusion complex and creates a pool of synaptobrevin for exocytosis when synapse activity increases. Synaptophysin is also responsible for targeting synaptobrevin 2/VAMP2 to synaptic vesicles, a critical component of the fusion complex.

Source of Antigen and Antibodies

Antigen	Purified recombinant fragment of SYP expressed in E. Coli.
Ab Host/type	Balb/c mouse. IgG1 Ascetic fluid containing 0.05% sodium azide.
2-Ab	Goat Anti-mouse IgG-HRP conjugate Cat # 40320 (AP, biotin, FITC conjugates also available)
-ve control IgG	Cat # 20008-1, Mouse (non-immune) Serum IgG, purified, suitable for ELISA, Western, IHC as -ve control

Isotype controls:

Catalog#	Product Description
20102-101	Mouse IgG1 isotype control, purified
20102-101-APC	Mouse IgG1-APC conjugate (isotype)
20102-101-B	Mouse IgG1-Biotin conjugate (isotype)
20102-101-F	Mouse IgG1-FITC conjugate (isotype)
20102-101-FP	Mouse IgG1-FITC-PE conjugate (isotype)
20102-101-HP	Mouse IgG1-HRP conjugate (isotype)
20102-101-PC5	Mouse IgG1-PE-Cy5 conjugate (isotype)
20102-101-PE	Mouse IgG1-PE conjugate (isotype control)

Suggested Dilutions:

Western blot	1:500 – 1:2000
Immunohistochemistry (IHC):	1:200 – 1:1000
Immunocytochemistry (ICC):	N/A
Flow cytometry (FCM):	N/A
ELISA	1:5000 – 1:100000

Form: Antibodies are supplied in PBS, pH 7.5, 0.05% azide and 0.1% BSA in liquid (0.5-1 mg/ml) or lyophilized in the same buffer. Reconstitute powder in 100 ul water or PBS. Store at -20°C or below in suitable size Aliquots.

Shipping: 4°C for solutions and room temp for powder.

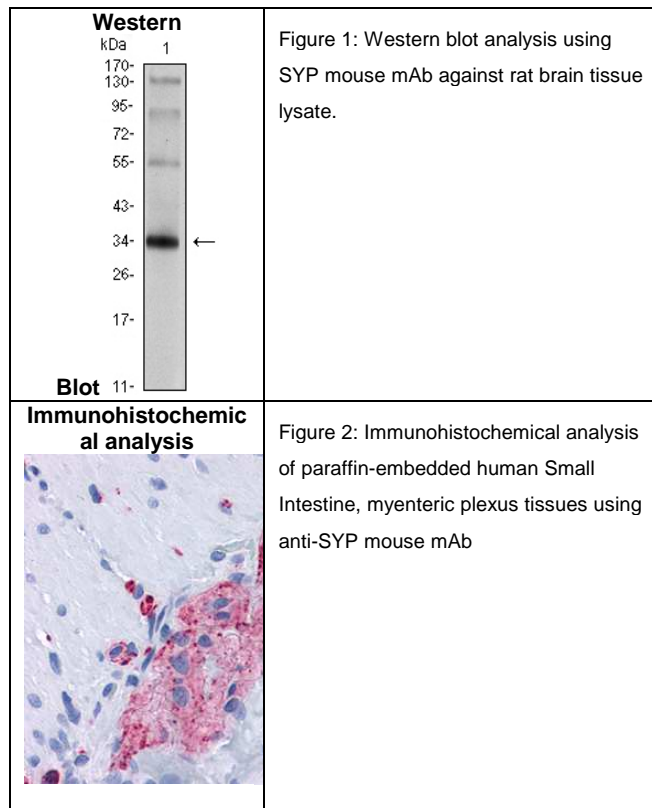


Figure 1: Western blot analysis using SYP mouse mAb against rat brain tissue lysate.

Figure 2: Immunohistochemical analysis of paraffin-embedded human Small Intestine, myenteric plexus tissues using anti-SYP mouse mAb

References:

Cancer. 2007 ;110(8):1776-81. J Gastroenterol Hepatol. 2008 23(10):1574-85.

**All products are for In vitro research use only.*

Related material available from ADI

MA-30032

150824V