

Product Specification Sheet
Recombinant MERS-CoV RBD

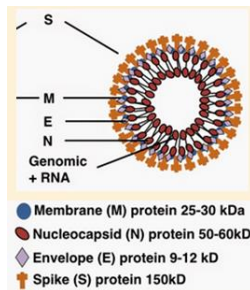
□ Cat # MERS36-R-10

Recombinant (E. Coli) Purified MERS RBD (383-502 aa, His-tag ~15 kda) for ELISA and Western

SIZE: 10 ug

MERS is a viral respiratory infection caused by the newly identified **MERS-coronavirus (MERS-CoV)**. MERS-CoV is a betacoronavirus derived from bats. Camels have been shown to have antibodies to MERS-CoV, but the exact source of infection in camels has not been identified. A strain of MERS-CoV known as HCoV-EMC/2012 found in the first patient in London in 2012 was found to have a 100% match to Egyptian tomb bats. Early reports compared the virus to severe acute respiratory syndrome (SARS), and it has been referred to as Saudi Arabia's SARS-like virus. MERS can range from asymptomatic disease to severe pneumonia leading to the acute respiratory distress syndrome. Renal failure, disseminated intravascular coagulation (DIC) and pericarditis have also been reported. MERS have high fatality rate, 77 deaths in 187 confirmed cases. MERS-CoV has been reported or by direct or indirect contact with others who have a travel history consistent with exposure in the Middle East. However, the origin of the infection in most cases remains unknown. Sera samples from European sheep, goats, cattle, and other camelids had no such antibodies. Human or animals diagnostic serology is based upon PCR or ELISA or antibody neutralization tests.

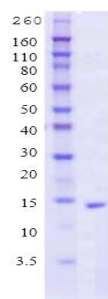
The virus MERS-CoV is a new member of the beta group of coronavirus, Betacoronavirus, lineage C. MERS-CoV genomes are phylogenetically classified into two clades, clade A and B, and is more closely related to the bat coronaviruses HKU4 and HKU5 (lineage 2C) than it is to SARS-CoV (lineage 2B) (2, 9), sharing more than 90% sequence identity with their closest relationships, bat coronaviruses HKU4 and HKU5.



Coronaviruses are a positive ssRNA genome of about 27-32kb that codes for structural protein genes - namely the **Spike (S)**, **Envelope (E)**, **Membrane (M)**, and **Nucleocapsid (N)** genes - as well as the Polymerase. The presence of MERS viral antibodies (N, E and S) have been used to detect the infected animal or humans. MERS-CoV utilizes receptor, dipeptidyl peptidase 4 (DPP4), for binding to DPP4-expressing cells via the Spike protein. **S1** subunit mediates virus binding to cells expressing **DPP4** through its receptor-binding domain (**RBD**, 367-606 aa) region and an **S2** subunit that mediates virus-cell membrane fusion. A truncated RBD domain (377-588)-Fc protein binds efficiently to DPP4. Antibodies to the RBD domain also protect animals from MERS infection. Antibodies to the RBD domain also protected animals from MERS infection. Therefore, MERS-CoV S1 region or the RBD are potential vaccine candidates.

Antibodies to the RBD domain also protect animals from MERS infection. Therefore, MERS-CoV S1 region or the RBD are potential vaccine candidates.

Source of Antigen



MERS-CoV RBD was expressed in E.coli cells and fused with a **Fc** region of rabbit IgG at the C terminus and (383-502 a.a, 15 kDa, >85%). Recombinant RBD is ~15 kDa under reducing conditions. Purified protein is supplied in 15 mM Tris-HCl [pH 8.0], 0.07 M NaCl, 1.5 mM B-ME, 0.15 mM EDTA, 2.5 M Urea and 0.07 M Imidazole. (see lot specific conc. on vial).

It is suitable for ELISA, Western or other applications where native protein is required. Do not freeze, thaw, or heat repeatedly.

Storage

Short-term: unopened, undiluted vials for less than a week at 4oC.

Long-term: at -20C or below in suitable aliquots after reconstitution. Do not freeze and thaw and store working, diluted solutions.

Stability: 6-12 months at -20oC or below.

Shipping: 4oC for solutions and room temp for powder.

Recommended Usage

Western Blotting: load 100-200 ng/well.

ELISA (50-100 ng antigen/well).

Specificity: MERS-CoV RBD sequence is conserved (68%) in the bat coronaviruses HKU4, HKU5, BtCoV strains. Recombinant proteins and antibodies to various MERS proteins are available for control studies.

General References: Sandervan (2012) mBio.3:e00473-12.2.; Muller MA (2012) mBio3(6):e00515-12.; ChanJF (2012) JInfect.65(6):477-89. Hemida, MG (2013) Euro Surveillance 18 (50); Guery B (2013) Lancet; 381:2265.

**This product is for In vitro research use only.*

Related material available from ADI

Catalog# Prod Description

MERS35-R-10 Recombinant (Sf9) MERS RBD (367-606 a.a, Rb Fc-tag, ~51 kda, >80%, low Endotoxin), active

MERS36-R-10 Recombinant (Sf9) Purified MERS RBD (383-502 a.a, Rb Fc-tag, ~42 kda, >85%, low Endotoxin) active

MERS37-R-10 Recombinant (Sf9) Purified MERS RBD (367-606 a.a, His-tag, ~28 kda, low Endotoxin), active

MERS38-R-10 Recombinant (Sf9) Purified MERS RBD (383-502 a.a, Mouse Fc-tag, ~44 kda, low Endotoxin), active

RV-402200-1 Recombivirus Human Anti-Middle East Respiratory Syndrome Coronavirus (MERS-CoV) Spike protein 1 (S1) antibody (IgG) ELISA kit

RV-402210-1 Recombivirus Camel Anti-Middle East Respiratory Syndrome Coronavirus (MERS-CoV) Spike protein 1 (S1) antibody (IgG) ELISA kit

RV-402220-1 Recombivirus Bat Anti-Middle East Respiratory Syndrome Coronavirus (MERS-CoV) Spike protein 1 (S1) antibody (IgG) ELISA kit

RV-402230-1 Recombivirus Pig Anti-Middle East Respiratory Syndrome Coronavirus (MERS-CoV) Spike protein 1 (S1) antibody (IgG) ELISA kit

RV-402240-1 Recombivirus Cow Anti-Middle East Respiratory Syndrome Coronavirus (MERS-CoV) Spike protein 1 (S1) antibody (IgG) ELISA kit

RV-402250-1 Recombivirus Goat/Sheep Anti-Middle East Respiratory Syndrome Coronavirus (MERS-CoV) Spike protein 1 (S1) antibody (IgG) ELISA kit

RV-402300-1 Recombivirus Human Anti-Middle East Respiratory Syndrome Coronavirus (MERS-CoV) Spike protein 2 (S2) antibody (IgG) ELISA kit

RV-402310-1 Recombivirus Camel Anti-Middle East Respiratory Syndrome Coronavirus (MERS-CoV) Spike protein 2 (S2) antibody (IgG) ELISA kit

RV-402320-1 Recombivirus Bat Anti-Middle East Respiratory Syndrome Coronavirus (MERS-CoV) Spike protein 2 (S2) antibody (IgG) ELISA kit

RV-402330-1 Recombivirus Pig Anti-Middle East Respiratory Syndrome Coronavirus (MERS-CoV) Spike protein 2 (S2) antibody (IgG) ELISA kit

RV-402340-1 Recombivirus Cow Anti-Middle East Respiratory Syndrome Coronavirus (MERS-CoV) Spike protein 2 (S2) antibody (IgG) ELISA kit

RV-402350-1 Recombivirus Goat/Sheep Anti-Middle East Respiratory Syndrome Coronavirus (MERS-CoV) Spike protein 2 (S2) antibody (IgG) ELISA kit

MERS36-R-10-RBD-protein

160408SV